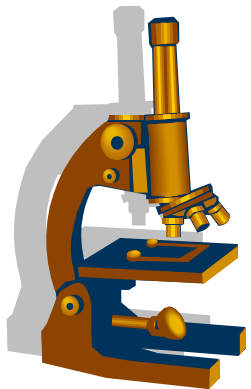




Resistenzepidemiologie 2018

Innere

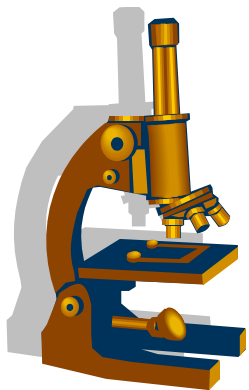
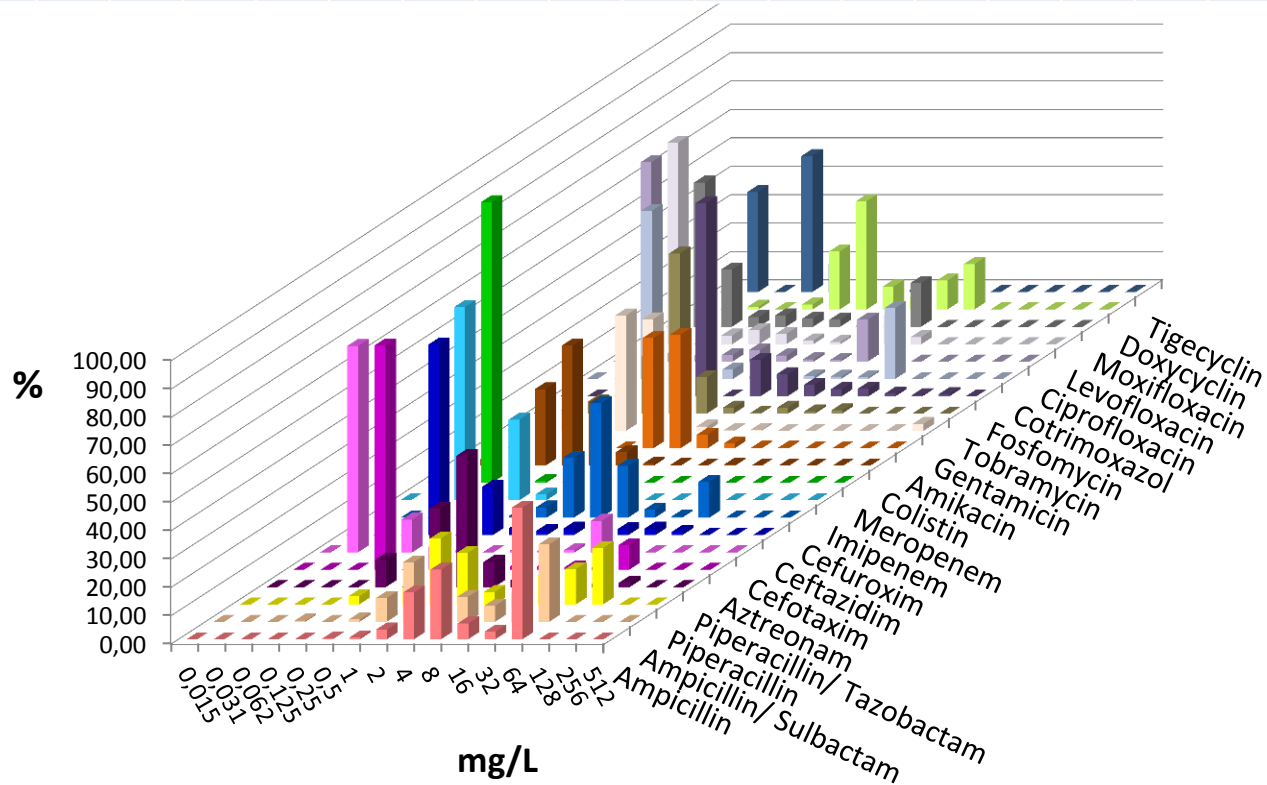
Arne C. Rodloff
Norman Lippmann



Innere 2018

Escherichia coli

	AMP	ASU	PIP	PIT	AZT	CTX	CAZ	CFX	IMP	MER	COL	AMK	GEN	TOB	FOS	SXT	CIP	LEV	MOX	DOX	TIG
n	521	476	521	520	482	520	521	520	520	520	441	519	520	521	520	520	520	520	520	520	520
S	45	57	54	95	87	87	87	84	100	100	99	100	97	96	98	73	78	83	78		98
I			3	1	2	1	2		0	0		0	0	0		1	4	1			
R	55	43	43	4	11	12	12	16	0	0	1	0	3	4	2	26	18	16	22		2

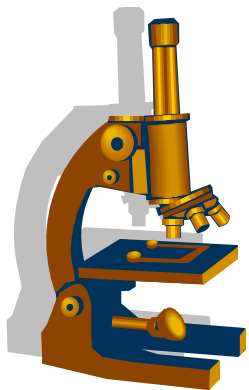
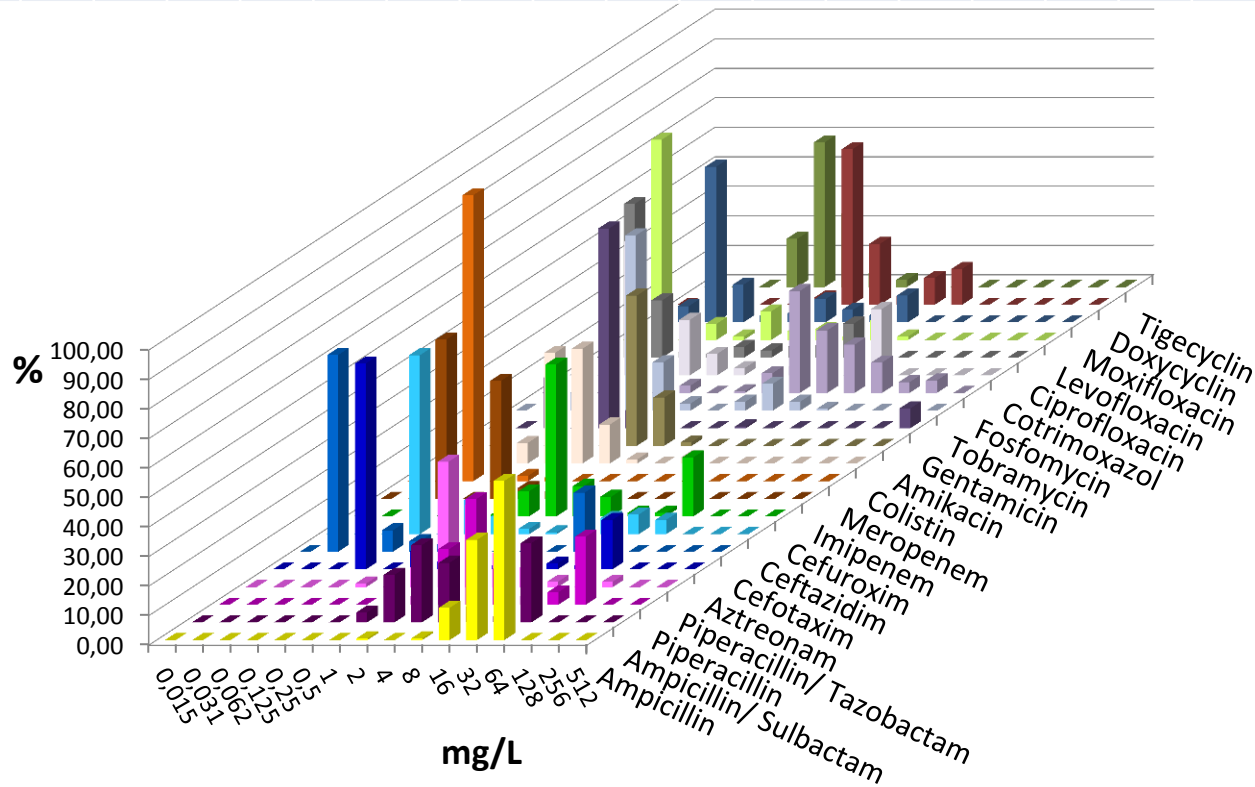


Innere 2018

Klebsiella pneumoniae



	AMP	ASU	PIP	PIT	AZT	CTX	CAZ	CFX	IMP	MER	COL	AMK	GEN	TOB	FOS	SXT	CIP	LEV	MOX	DOX	TIG	
n	165	149	165	165	149	165	165	165	165	164	144	165	164	165	165	165	165	165	165	165	165	
S	1	66	58	90	79	80	78	78	100	100	98	100	93	84	82	75	75	84	73		95	
I			12	7	1	0	2		0	0		0	0	3		3	4	3				2
R	99	34	30	4	20	20	20	22	0	0	2	0	7	13	18	22	22	13	27			2

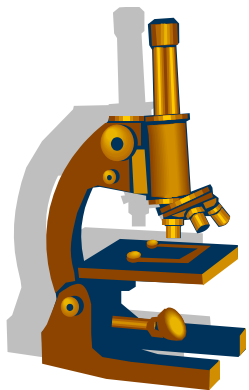
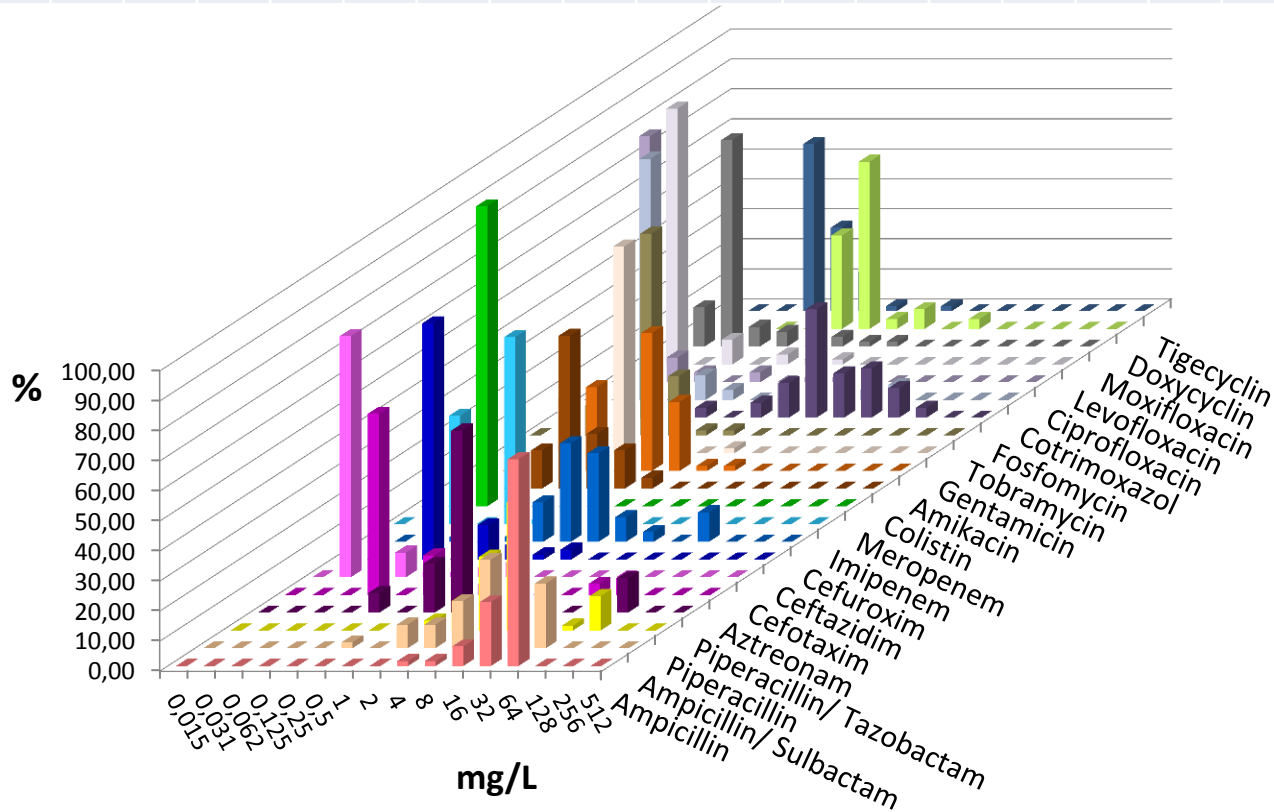


Innere 2018

Klebsiella oxytoca



	AMP	ASU	PIP	PIT	AZT	CTX	CAZ	CFX	IMP	MER	COL	AMK	GEN	TOB	FOS	SXT	CIP	LEV	MOX	DOX	TIG	
n	61	51	61	61	53	61	61	61	61	61	55	61	61	61	61	61	61	61	61	61	61	
S	3	33	38	89	87	95	95	87	100	100	100	100	98	100	87	92	93	97	93			98
I			43	0	4	5	2		0	0		0	2	0		0	3	2				0
R	97	67	20	11	9	0	3	13	0	0	0	0	0	0	13	8	3	2	7			2

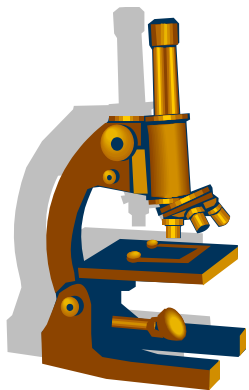
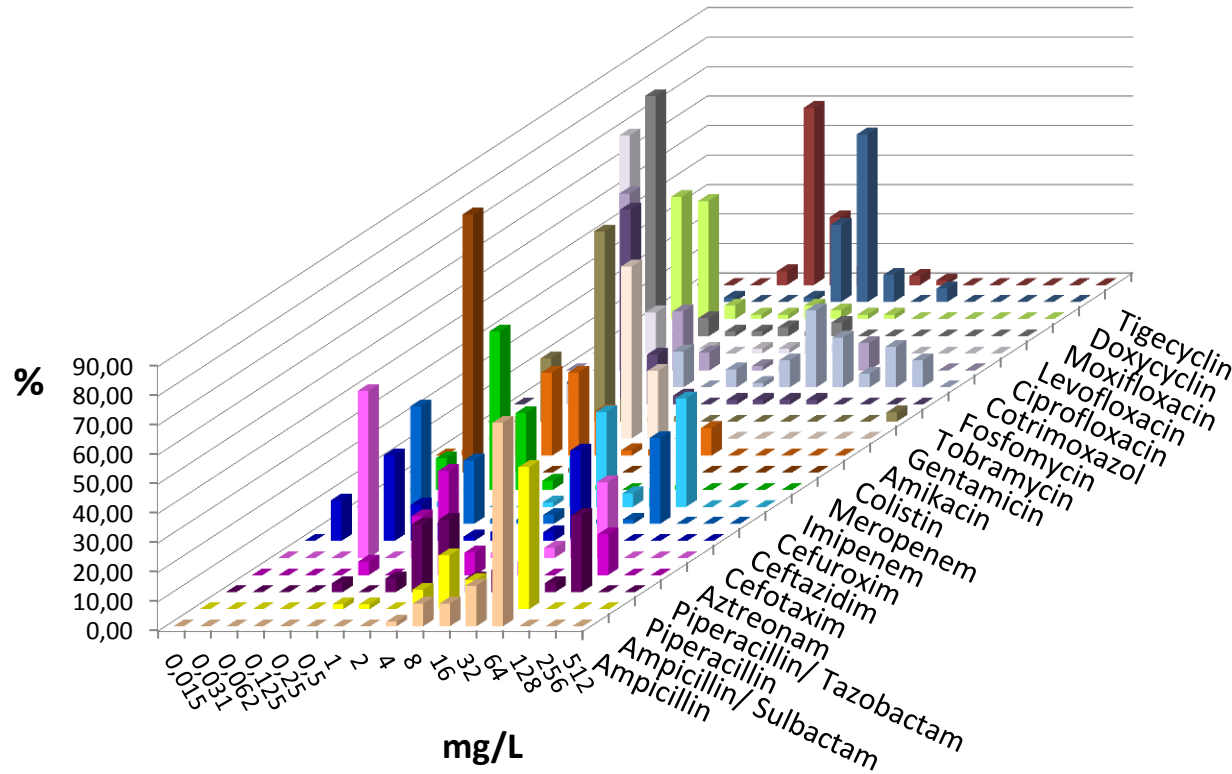


Innere 2018

Enterobacter cloacae



	AMP	ASU	PIP	PIT	AZT	CTX	CAZ	CFX	IMP	MER	COL	AMK	GEN	TOB	FOS	SXT	CIP	LEV	MOX	DOX	TIG	
n	65	60	65	65	58	65	65	65	65	65	53	65	65	65	65	65	65	65	65	65	65	
S	9	28	60	69	62	63	63	52	97	100	89	100	97	94	72	88	89	91	88		94	
I			8	5	2	3	2		2	0		0	0	2		2	0	3				2
R	91	72	32	26	36	34	35	48	2	0	11	0	3	5	28	11	11	6	12			5

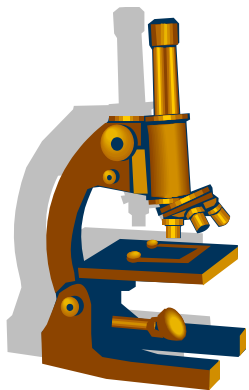
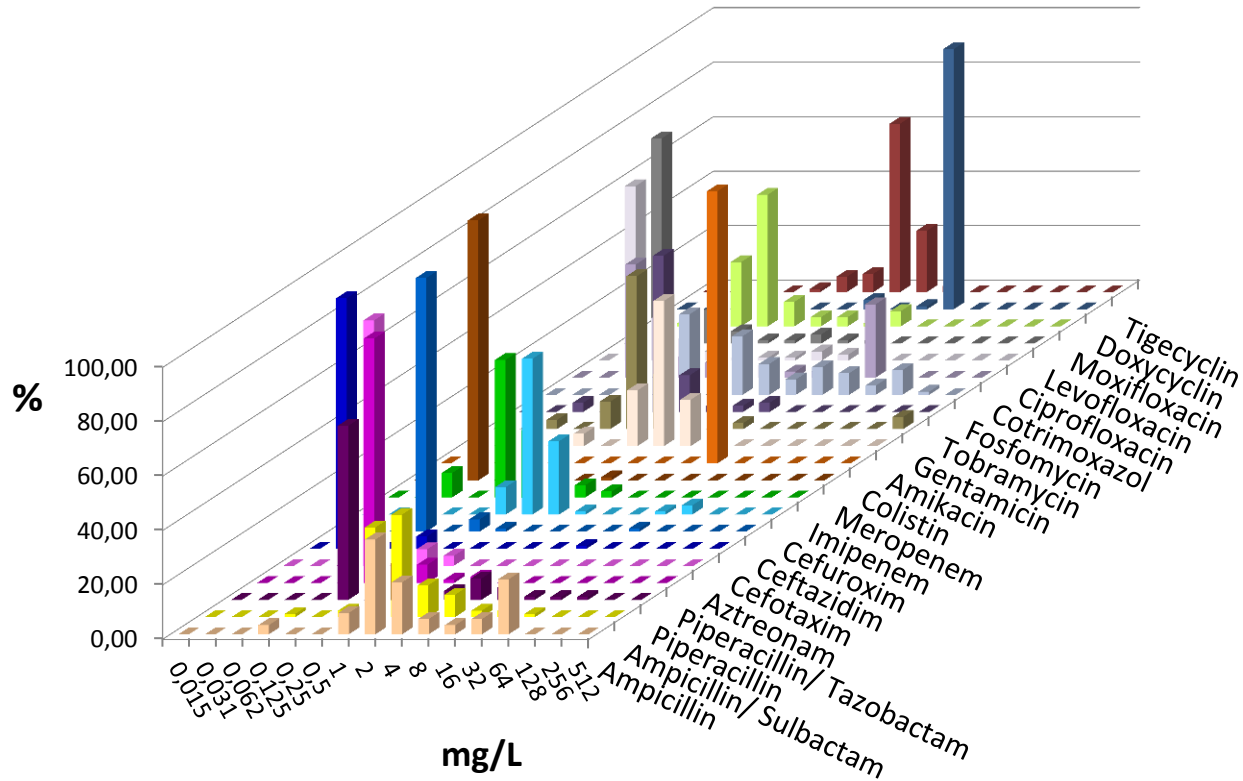


Innere 2018

Proteus mirabilis



	AMP	ASU	PIP	PIT	AZT	CTX	CAZ	CFX	IMP	MER	COL	AMK	GEN	TOB	FOS	SXT	CIP	LEV	MOX	DOX	TIG
n	89	85	89	89	82	89	89	89	89	89	72	88	89	89	88	89	89	89	89	89	89
S	71	94	92	100	100	99	99	96	9	100	0	100	93	94	86	69	91	93	78		
I			4	0	0	0	0		91	0		0	0	2		2	1	1			
R	29	6	3	0	0	1	1	4	0	0	100	0	7	3	14	29	8	6	22		100

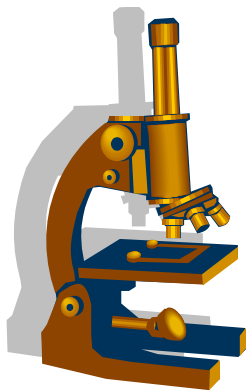
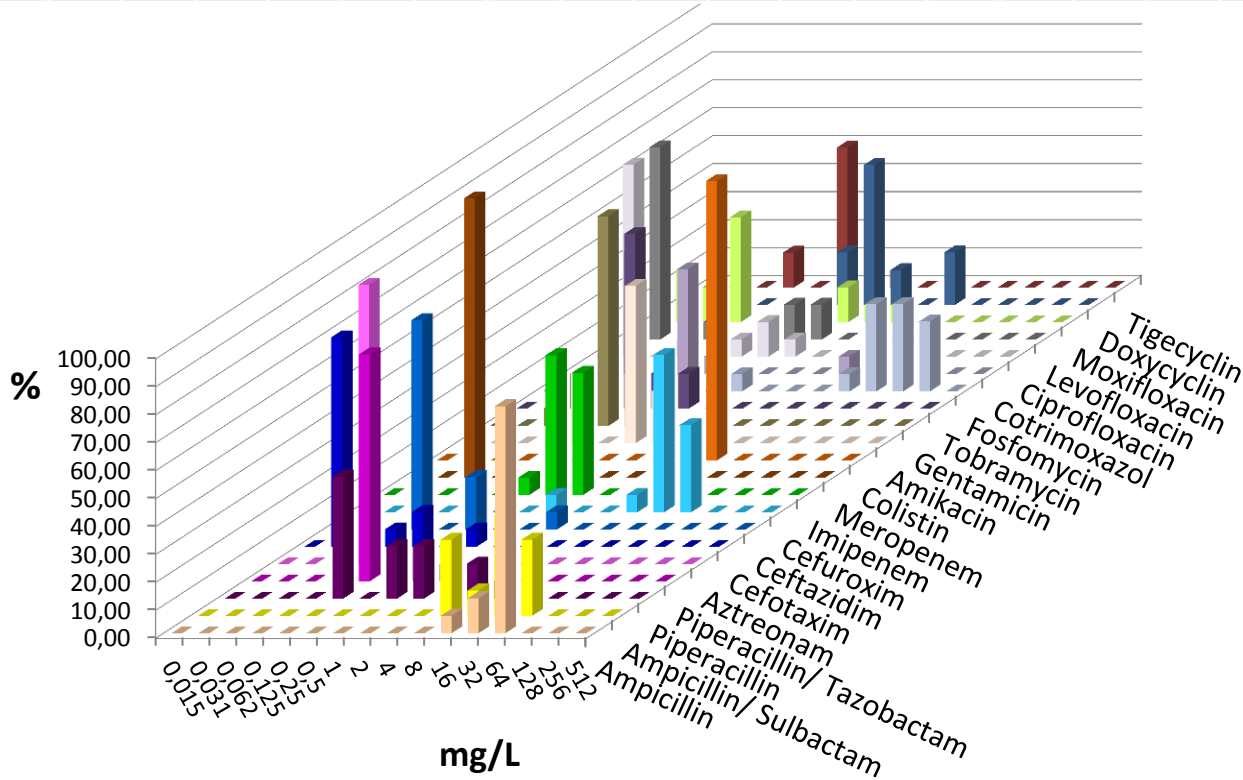


Innere 2018

Morganella morganii



	AMP	ASU	PIP	PIT	AZT	CTX	CAZ	CFX	IMP	MER	COL	AMK	GEN	TOB	FOS	SXT	CIP	LEV	MOX	DOX	TIG
n	16	11	16	16	16	16	16	16	16	16	16	16	16	16	16	16	16	16	16	16	16
S	0	27	94	100	100	100	94	6	0	100	0	100	100	100	13	88	75	75	69		
I			6	0	0	0	0		100	0		0	0	0		0	6	13			
R	100	73	0	0	0	0	6	94	0	0	100	0	0	0	88	13	19	13	31		100

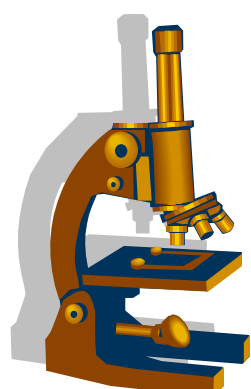
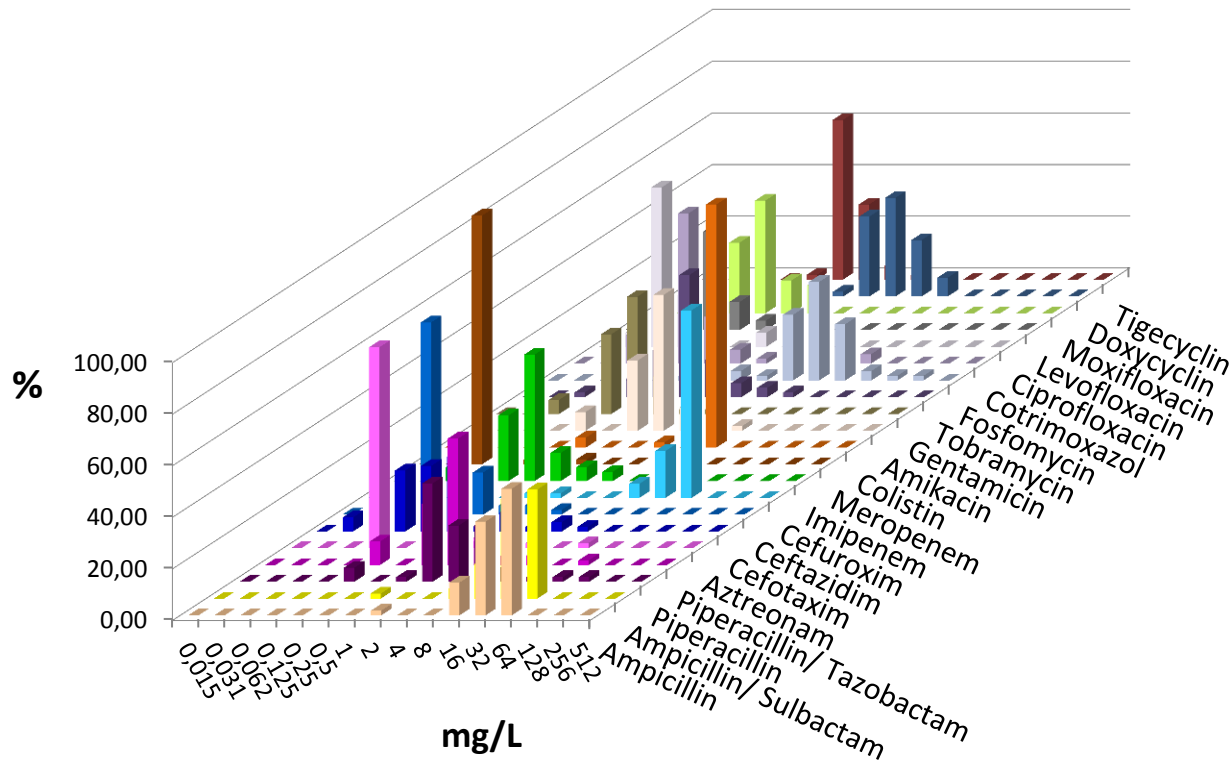


Innere 2018

Serratia marcescens



	AMP	ASU	PIP	PIT	AZT	CTX	CAZ	CFX	IMP	MER	COL	AMK	GEN	TOB	FOS	SXT	CIP	LEV	MOX	DOX	TIG
n	55	52	55	55	50	55	55	55	55	55	52	55	55	55	55	55	55	55	55	55	55
S	2	6	89	95	92	85	95	4	96	100	4	98	98	89	93	95	95	100	76		93
I			5	4	4	7	4		4	0		2	2	5		2	0	0			5
R	98	94	5	2	4	7	2	96	0	0	96	0	0	5	7	4	5	0	24		2



Innere 2018

Pseudomonas aeruginosa



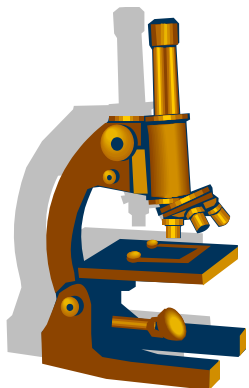
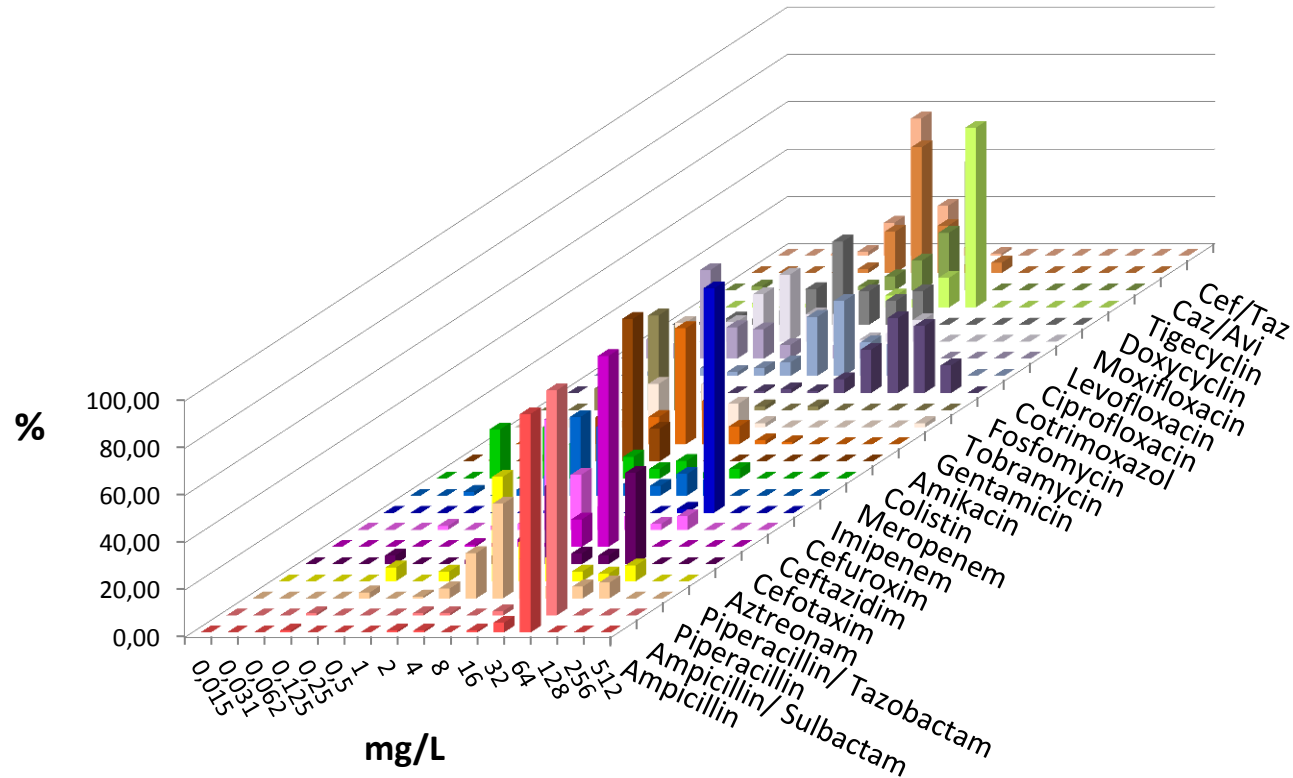
Universitätsklinikum
Leipzig

Medizin ist unsere Berufung.



ZENTRUM FÜR
INFEKTIONSMEDIZIN

	AMP	ASU	PIP	PIT	AZT	CTX	CAZ	CFX	IMP	MER	COL	AMK	GEN	TOB	FOS	SXT	CIP	LEV	MOX	DOX	TIG	Caz/Avi	Cef/Taz
n	120	105	120	120	109	120	120	120	120	120	101	120	120	120	120	120	120	120	120	120	120	115	114
S			83	86	58		86		80	82	100	98	97	98			78	75				100	100
I										12		2											
R			17	14	42		14		20	7	0	1	3	2			22	25				0	0



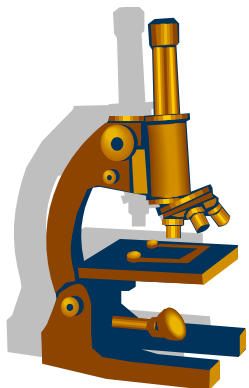
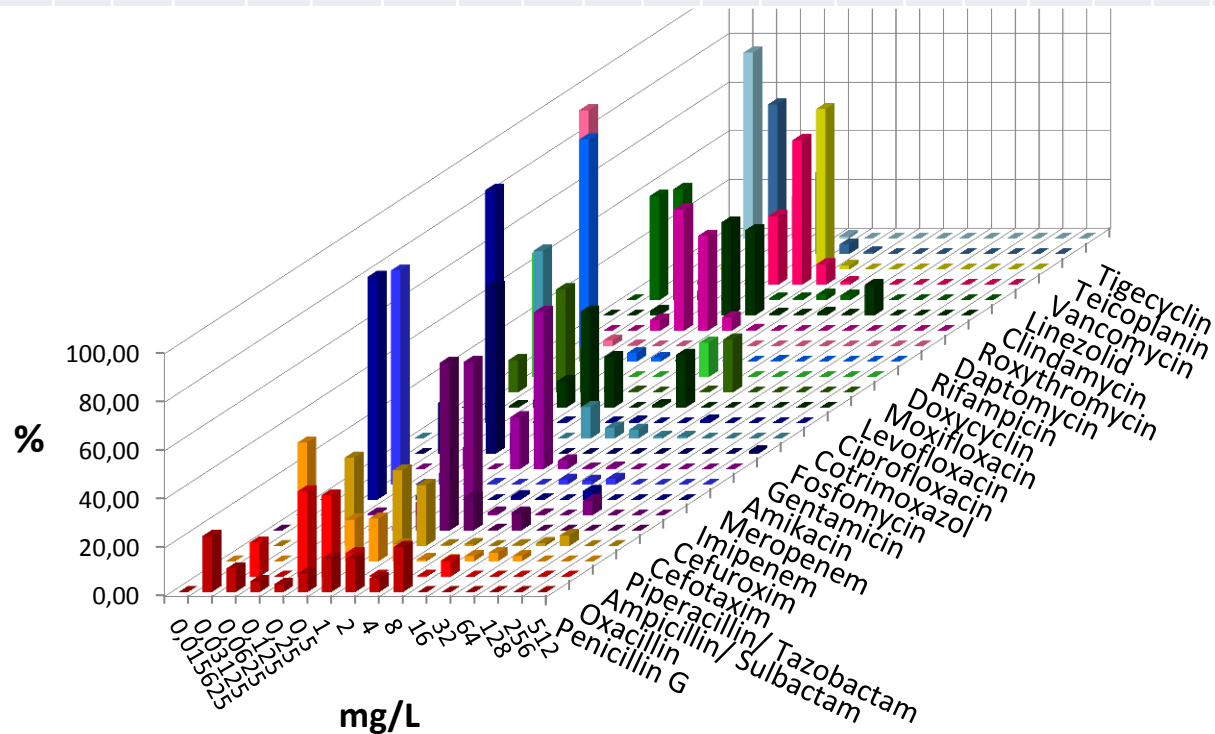
Institut für Medizinische Mikrobiologie und Infektionsepidemiologie

Innere 2018

Staphylococcus aureus



	PEN	OXA	ASU	PIT	CTX	CXM	IMP	MER	AMK	GEN	FOS	SXT	CIP	LEV	MOX	DOX	RIF	DAP	ROX	CLI	LIN	VAN	TPL	TIG
n	247	247	227	247	247	247	247	247	247	247	247	246	247	247	247	247	244	194	247	247	247	247	247	188
S	37	93							99	99	100	98	77	77	77	98	100	99	85	94	100	100	100	100
I									1			1				1	0		1	0				
R	63	7							0	1	0	1	23	23	23	1	0	1	15	6	0	0	0	0



Innere 2018

Staphylococcus epidermidis



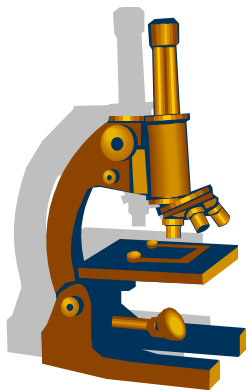
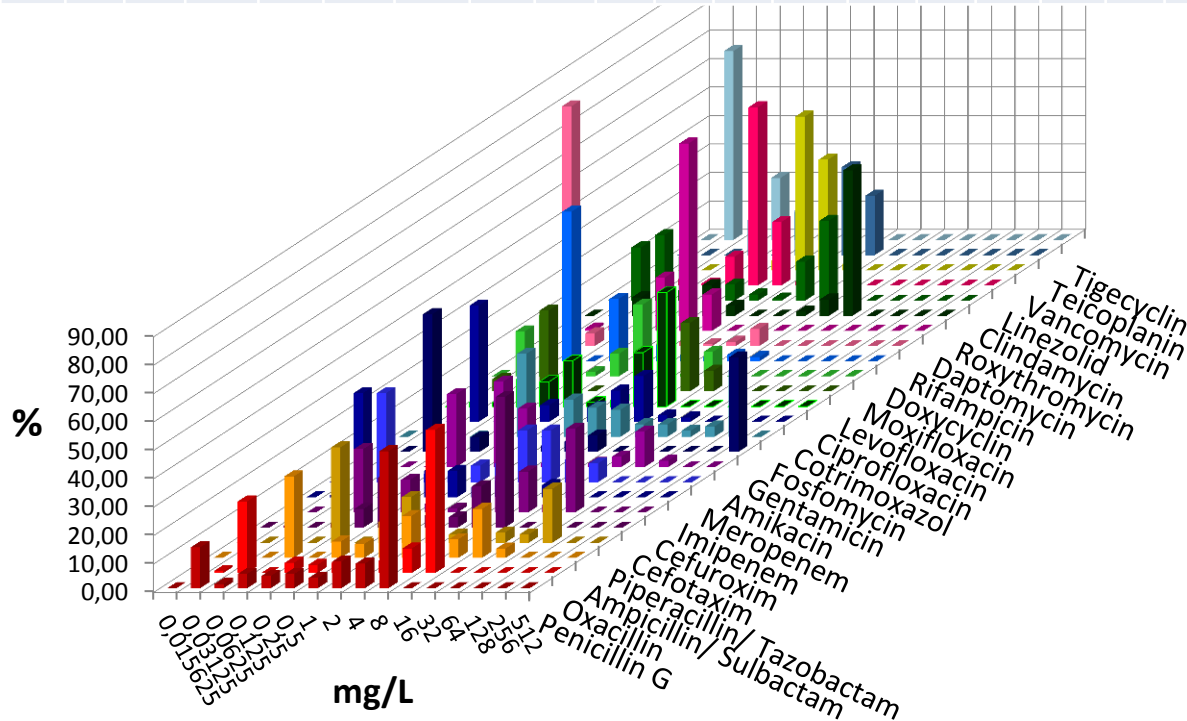
Universitätsklinikum
Leipzig

Medizin ist unsere Berufung.



ZENTRUM FÜR
INFEKTIONSMEDIZIN

	PEN	OXA	ASU	PIT	CTX	CXM	IMP	MER	AMK	GEN	FOS	SXT	CIP	LEV	MOX	DOX	RIF	DAP	ROX	CLI	LIN	VAN	TPL	TIG
n	139	139	122	137	137	139	139	137	136	138	137	137	137	137	139	137	133	117	139	139	139	139	139	92
S		29							80	55	71	69	39	39	40	93	89	100	42	50	100	100	100	100
I									1			11				2	2		0	6				
R		71							18	45	29	20	61	61	60	5	10	0	58	45	0	0	0	0

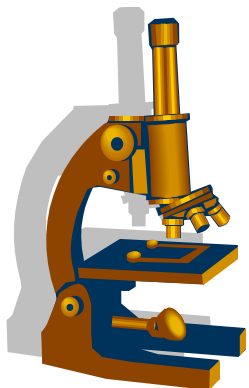
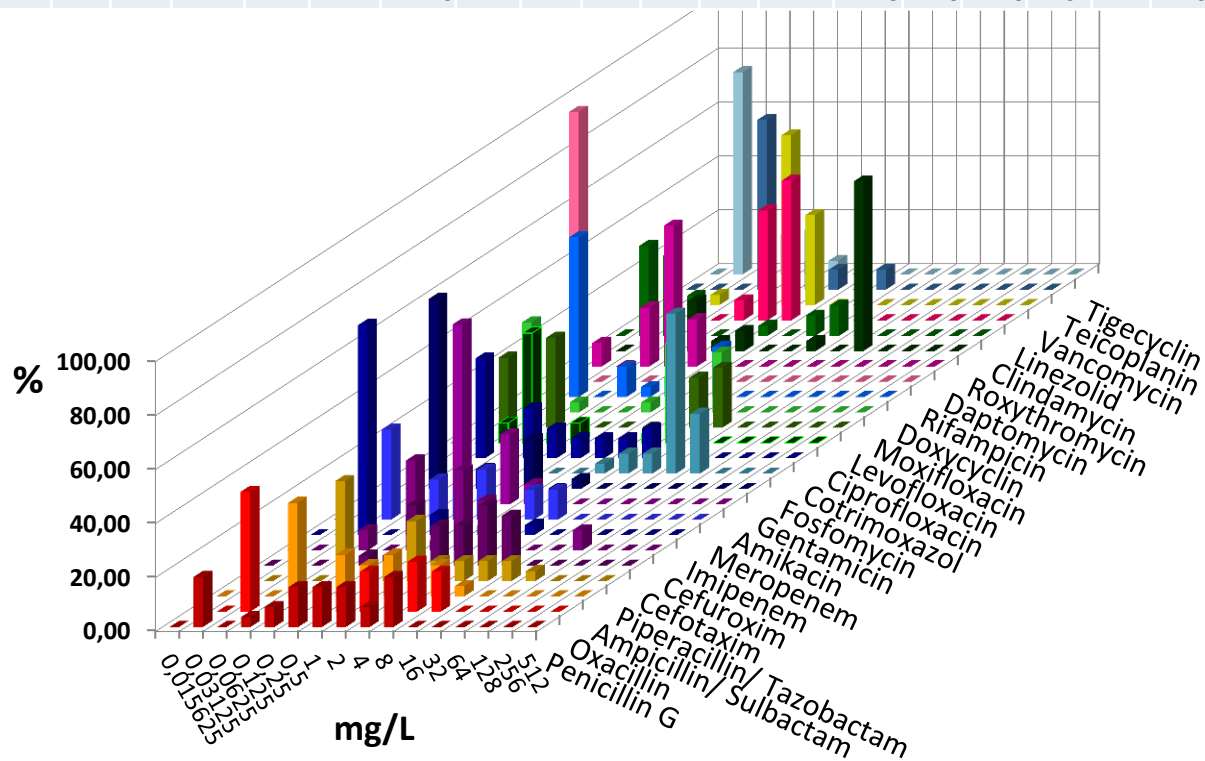


Innere 2018

Staphylococcus hominis



	PEN	OXA	ASU	PIT	CTX	CXM	IMP	MER	AMK	GEN	FOS	SXT	CIP	LEV	MOX	DOX	RIF	DAP	ROX	CLI	LIN	VAN	TPL	TIG	
n	27	27	26	27	27	27	27	27	27	27	27	27	27	27	27	27	27	23	27	27	27	27	27	20	
S		44							100	96	78	81	59	59	59	81	100	100	33	78	100	100	100	100	
I									0			7				0	0		0	0					
R		56							0	4	22	11	41	41	41	19	0	0	67	22	0	0	0	0	

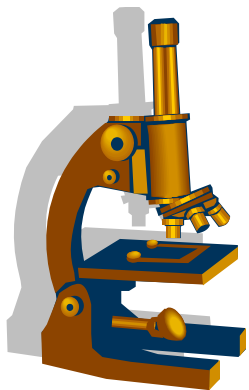
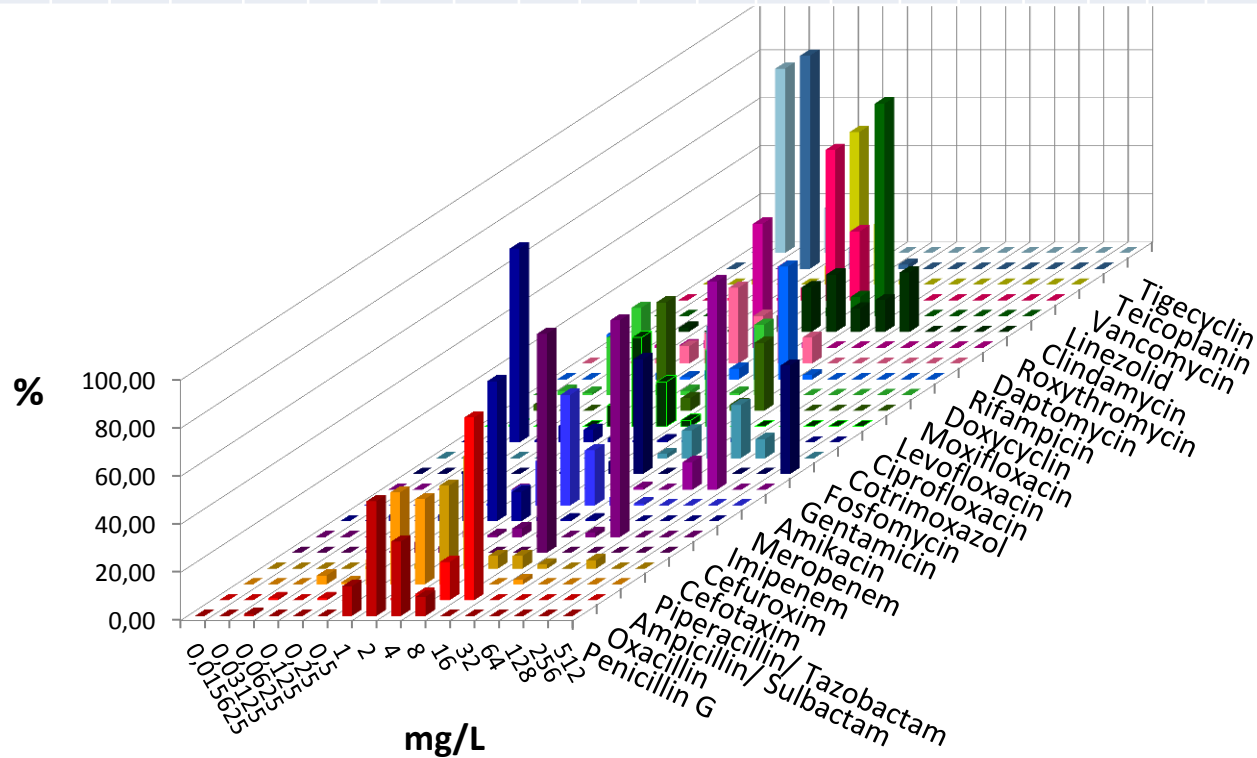


Innere 2018

Enterococcus faecalis



	PEN	OXA	ASU	PIT	CTX	CXM	IMP	MER	AMK	GEN	FOS	SXT	CIP	LEV	MOX	DOX	RIF	DAP	ROX	CLI	LIN	VAN	TPL	TGC		
n	113	113	107	113	113	113	115	113	113	113	113	114	113	113	113	113	111	95	113	113	113	115	115	115	86	
S			97				97					0									100	100	100	98		
I			1				1					96														
R			2				2					4										0	0	0	2	



Innere 2018

Enterococcus faecium



	PEN	OXA	ASU	PIT	CTX	CXM	IMP	MER	AMK	GEN	FOS	SXT	CIP	LEV	MOX	DOX	RIF	DAP	ROX	CLI	LIN	VAN	TPL	TGC	
n	58	58	54	58	58	58	58	58	58	58	58	58	58	58	58	57	58	46	58	58	58	58	58	42	
S			4				2					0									100	64	69	100	
I			2				3					78													
R			94				95					22										0	36	31	0

