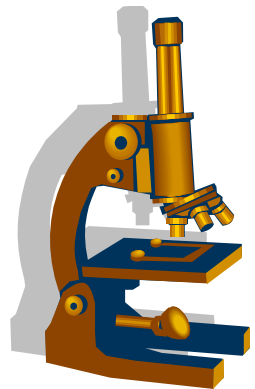




# Resistenzepidemiologie 2017

## Internistische Intensivstation

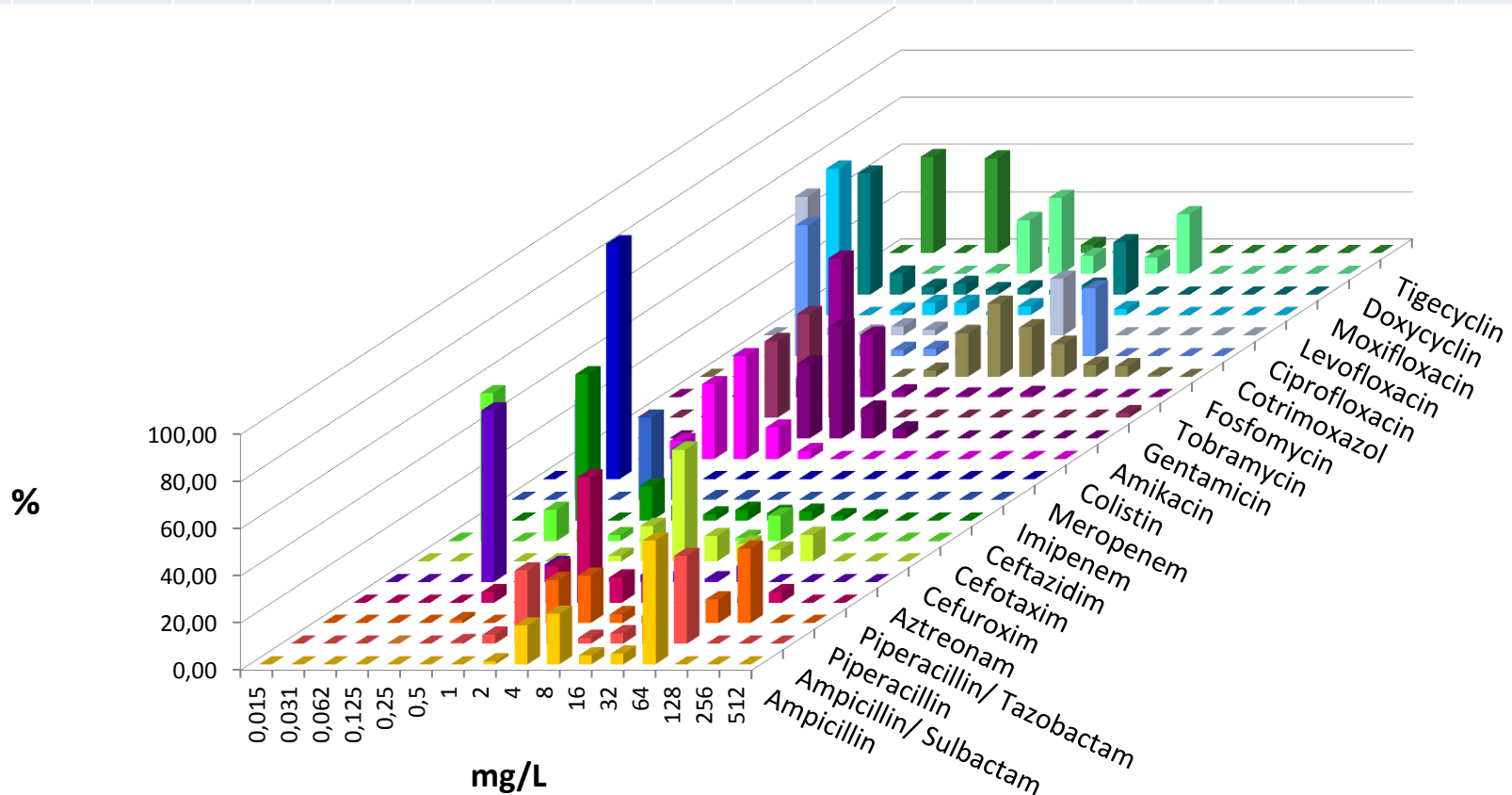
Arne C. Rodloff



# Internistische ITS 2017

## Escherichia coli

	AMP	ASU	PIP	PIT	AZT	CFX	CTX	CAZ	IMP	MER	COL	AMK	GEN	TOB	FOS	SXT	CIP	LEV	MOX	DOX	TIG
n	158	158	158	158	158	158	158	158	158	158	158	157	136	158	157	58	158	158	158	147	158
S	39	48	44	93	82	76	85	83	100	100	100	100	98	96	90	70	67	74	68		99
I			3	0	5		3	3	0	0		0	0	1		0	3	1			1
R	61	52	53	7	13	24	13	15	0	0	0	0	2	3	10	30	30	25	32		0



# Internistische ITS 2017

## Klebsiella pneumoniae



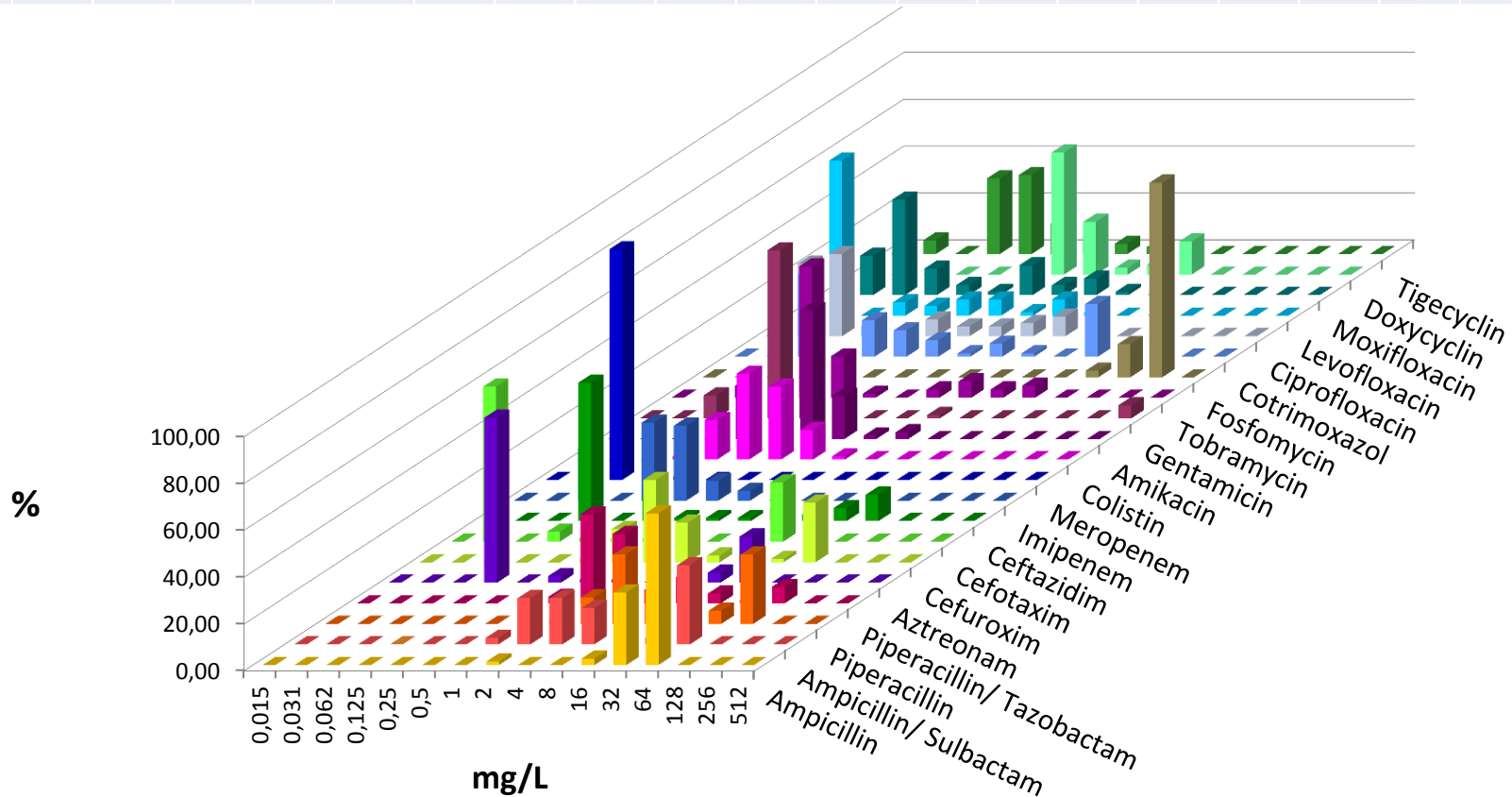
Universitätsklinikum  
Leipzig

Medizin ist unsere Berufung.



ZENTRUM FÜR  
INFektionsMEDIZIN

	AMP	ASU	PIP	PIT	AZT	CFX	CTX	CAZ	IMP	MER	COL	AMK	GEN	TOB	FOS	SXT	CIP	LEV	MOX	DOX	TIG
n	71	71	71	71	71	71	71	71	72	71	71	71	57	71	71	71	71	71	71	68	71
S	1	58	42	76	75	70	75	72	100	100	99	100	93	81	0	70	70	83	73		93
I			14	11	1		0	1	0	0		0	0	4		6	7	7			4
R	99	42	44	13	24	30	25	27	0	0	1	0	7	16	100	24	23	10	27		3

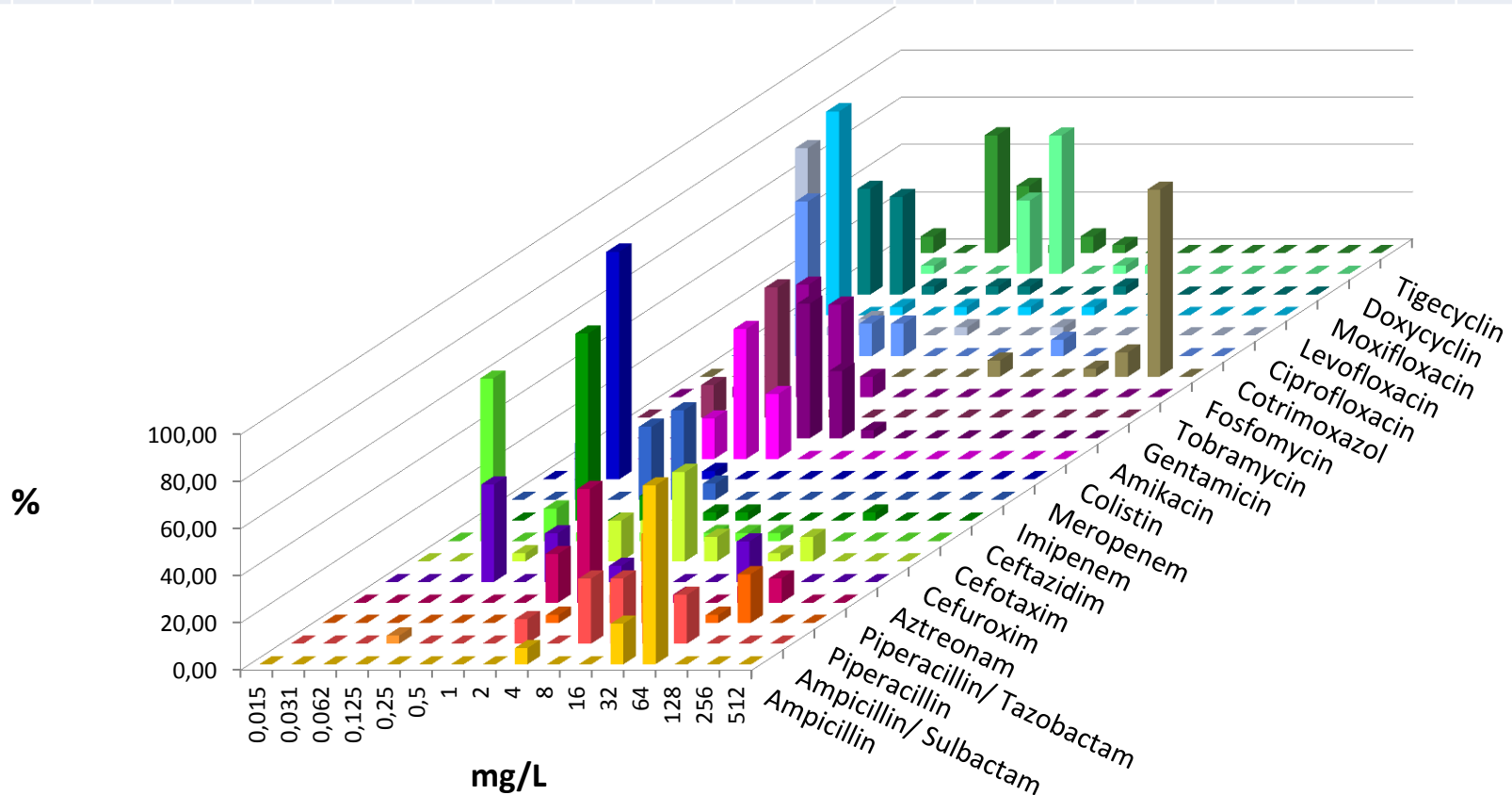


# Internistische ITS 2017

## Klebsiella oxytoca



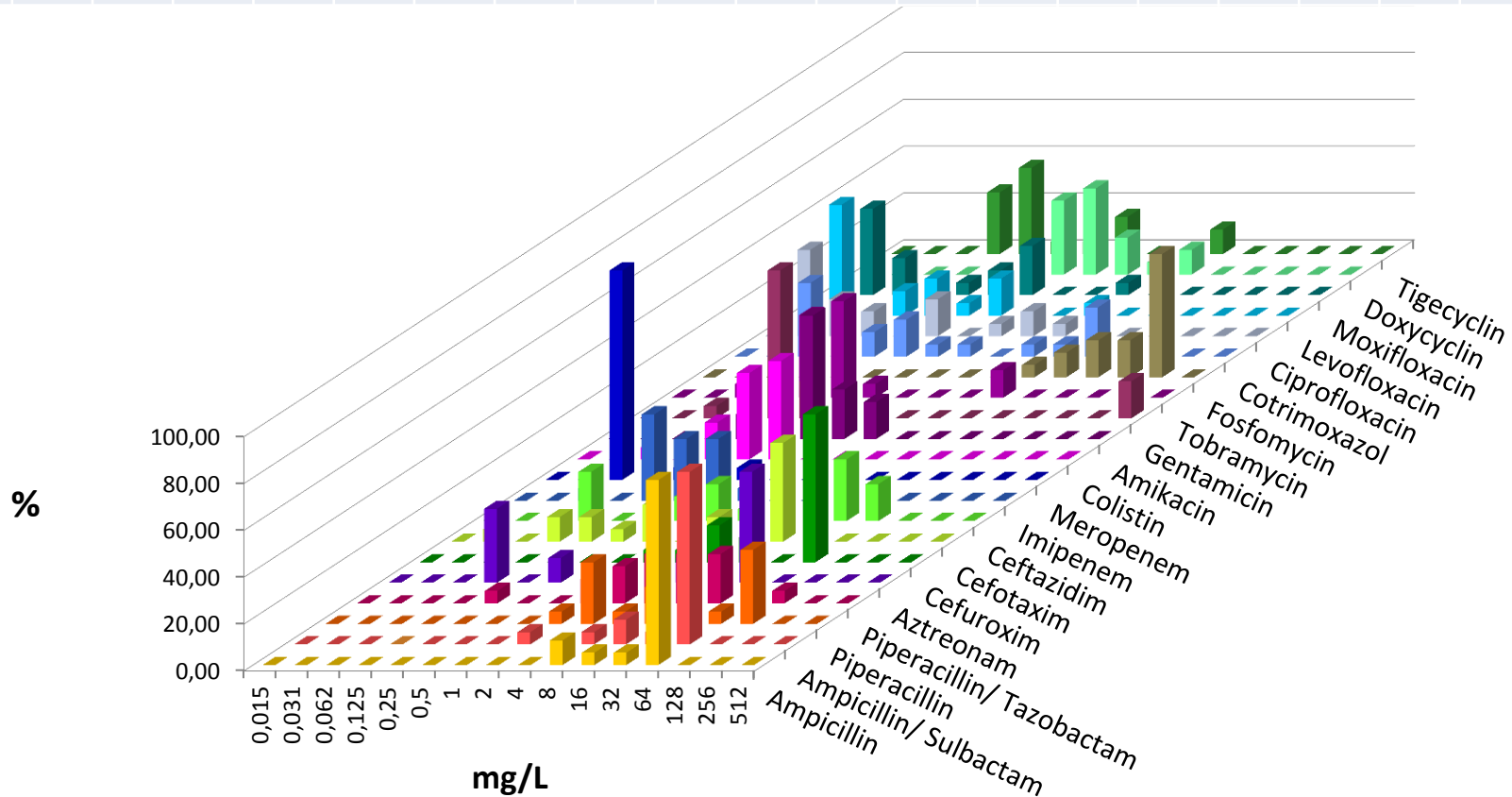
	AMP	ASU	PIP	PIT	AZT	CFX	CTX	CAZ	IMP	MER	COL	AMK	GEN	TOB	FOS	SXT	CIP	LEV	MOX	DOX	TIG
n	29	29	29	29	29	29	29	29	29	29	28	29	23	29	29	29	29	29	29	28	29
S	7	41	28	79	76	86	90	90	100	100	100	100	100	100	7	93	93	93	90		96
I			38	3	7		0	3	0	0		0	0	0		0	0	0			4
R	93	59	34	17	17	14	10	7	0	0	0	0	0	0	93	7	7	7	10		0



# Internistische ITS 2017

## Enterobacter cloacae

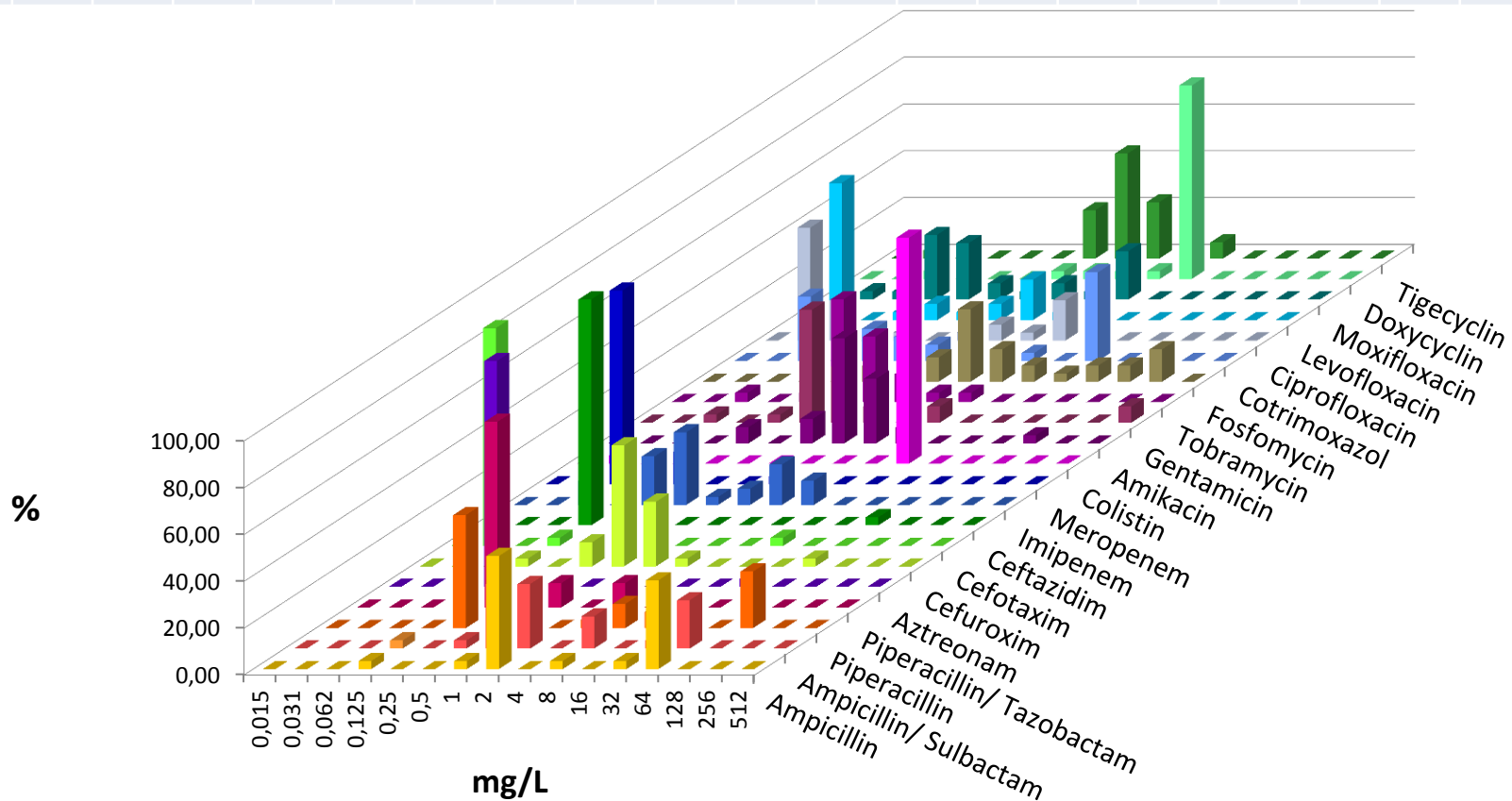
	AMP	ASU	PIP	PIT	AZT	CFX	CTX	CAZ	IMP	MER	COL	AMK	GEN	TOB	FOS	SXT	CIP	LEV	MOX	DOX	TIG
n	19	19	19	19	19	19	19	19	19	19	19	19	17	19	19	19	19	19	19	19	19
S	11	11	37	53	42	26	47	37	100	100	100	100	84	88	16	68	63	79	63		74
I			16	21	0		0	16	0	0		0	0	0		0	16	16			16
R	89	89	47	26	58	74	53	47	0	0	0	0	16	12	84	32	21	5	37		11



# Internistische ITS 2017

## Proteus mirabilis

	AMP	ASU	PIP	PIT	AZT	CFX	CTX	CAZ	IMP	MER	COL	AMK	GEN	TOB	FOS	SXT	CIP	LEV	MOX	DOX	TIG
n	29	29	29	29	29	29	29	29	29	29	29	29	25	29	29	29	29	29	29	29	29
S	59	76	69	100	97	97	97	97	72	100	3	97	86	92	72	59	69	72	59		24
I			7	0	0		0	0	28	0		0	0	4		0	0	7			45
R	41	24	24	0	3	3	3	3	0	0	97	3	14	4	28	41	31	21	41		31

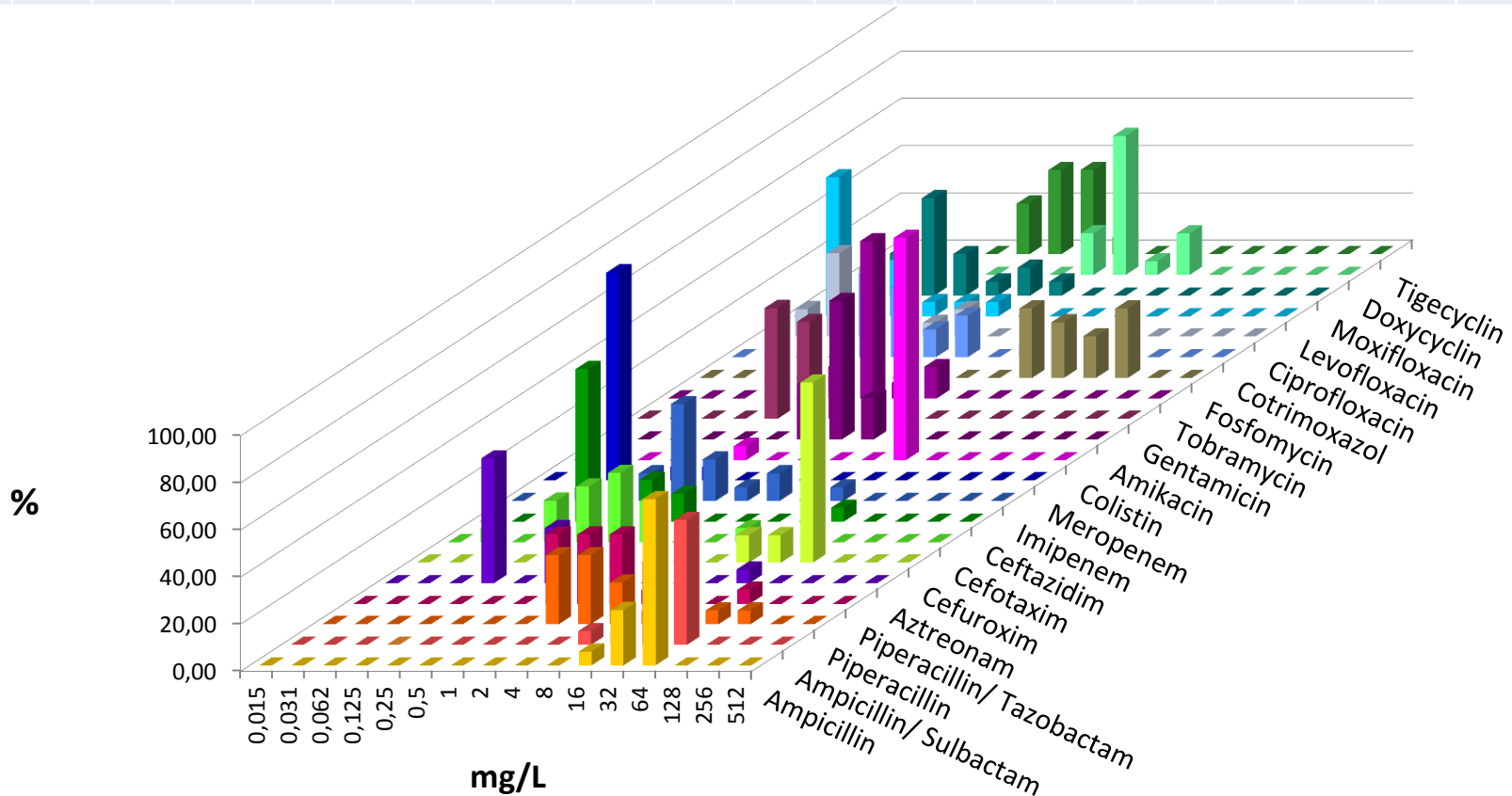


# Internistische ITS 2017

## Serratia marcescens



	AMP	ASU	PIP	PIT	AZT	CFX	CTX	CAZ	IMP	MER	COL	AMK	GEN	TOB	FOS	SXT	CIP	LEV	MOX	DOX	TIG
n	17	17	17	17	17	17	17	17	17	17	17	17	15	17	17	17	17	17	17	14	17
S	0	6	76	94	94	0	94	94	82	100	6	100	100	87	53	94	82	94	76		93
I			6	0	0		0	0	12	0		0	0	13		0	6	6			7
R	100	94	18	6	6	100	6	6	6	0	94	0	0	0	47	6	12	0	24		0

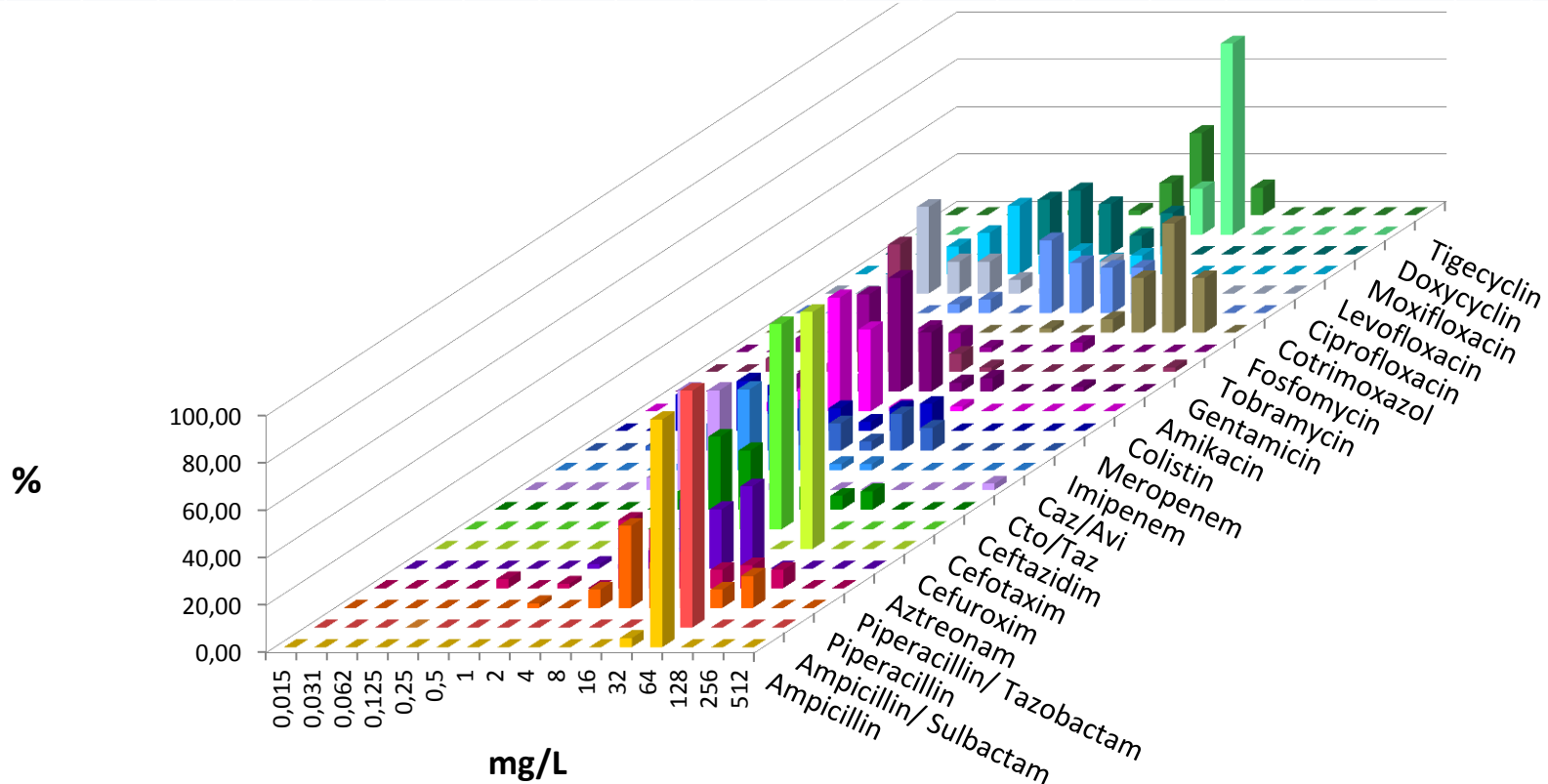




# Internistische ITS 2017

## Pseudomonas aeruginosa

	AMP	ASU	PIP	PIT	AZT	CFX	CTX	CAZ	CTO/ TAZ	CAZ/ AVI	IMP	MER	COL	AMK	GEN	TOB	FOS	SXT	CIP	LEV	MOX	DOX	TIG
n	52	52	52	52	52	52	52	52	38	38	52	52	52	52	52	49	52	52	52	52	52	52	52
S			63	75	2			77	97	97	71	75	96	92	96	96			71	65			
I					63						4	13		6									
R			37	25	35			23	3	3	25	12	4	2	4	4			29	35			





# Internistische ITS 2017

## Staphylococcus aureus



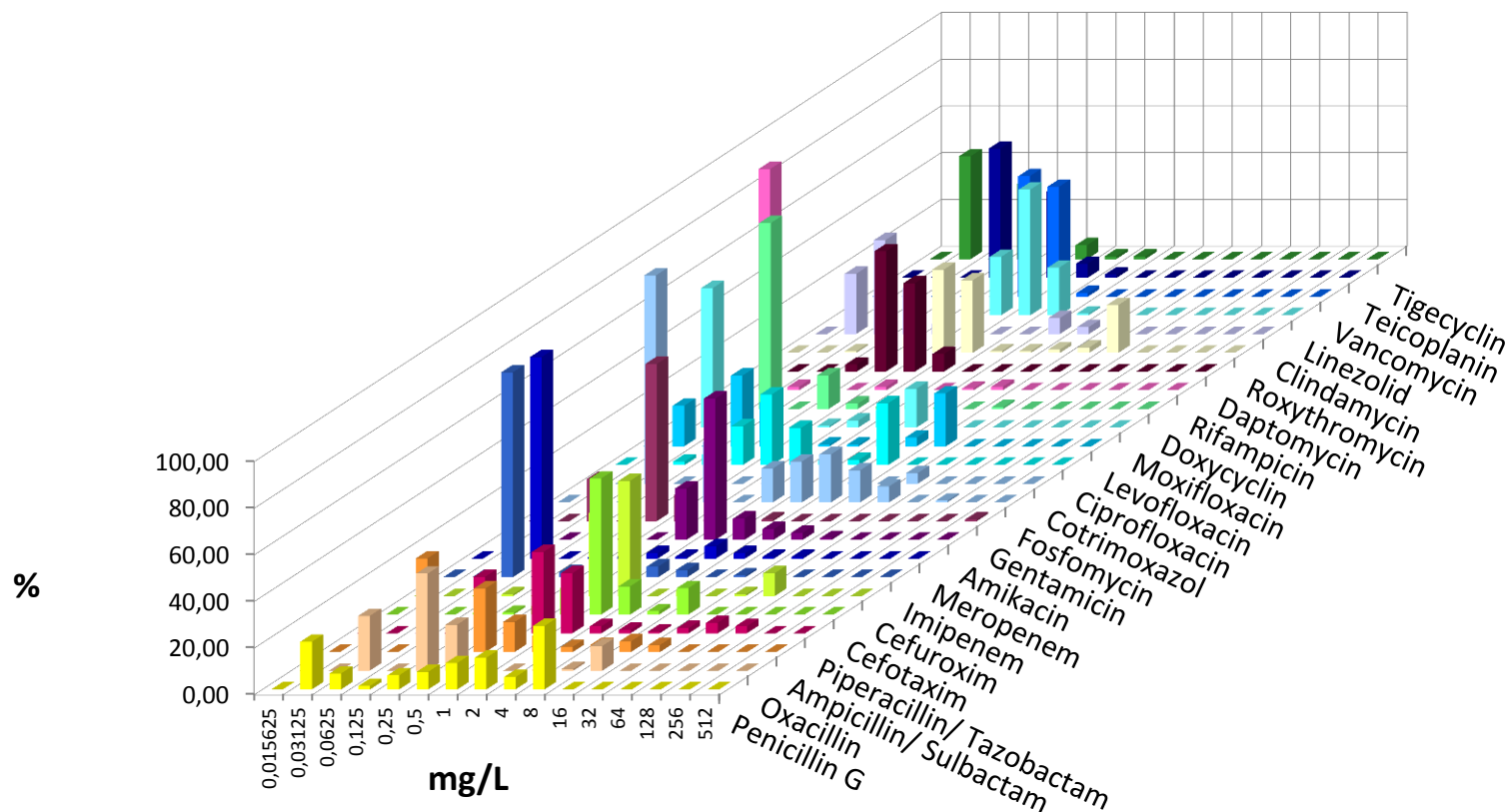
Universitätsklinikum  
Leipzig

Medizin ist unsere Berufung.



ZENTRUM FÜR  
INFektionsMEDIZIN

	PEN	OXA	ASU	PIT	CXM	CTX	IMP	MER	AMK	GEN	FOS	SXT	CIP	LEV	MOX	DOX	RIF	DAP	ROX	CLI	LIN	VAN	TPL	TGC
n	132	132	132	132	132	132	132	132	132	132	131	131	132	132	132	132	132	132	132	132	132	132	132	84
S	29	88							96	98	99	92	69	70	70	97	96	100	74	90	100	100	100	98
I									3			2				2	2		1	0				
R	71	12							1	2	1	5	31	30	30	2	2	0	25	10	0	0	0	2



# Internistische ITS 2017

## Staphylococcus epidermidis



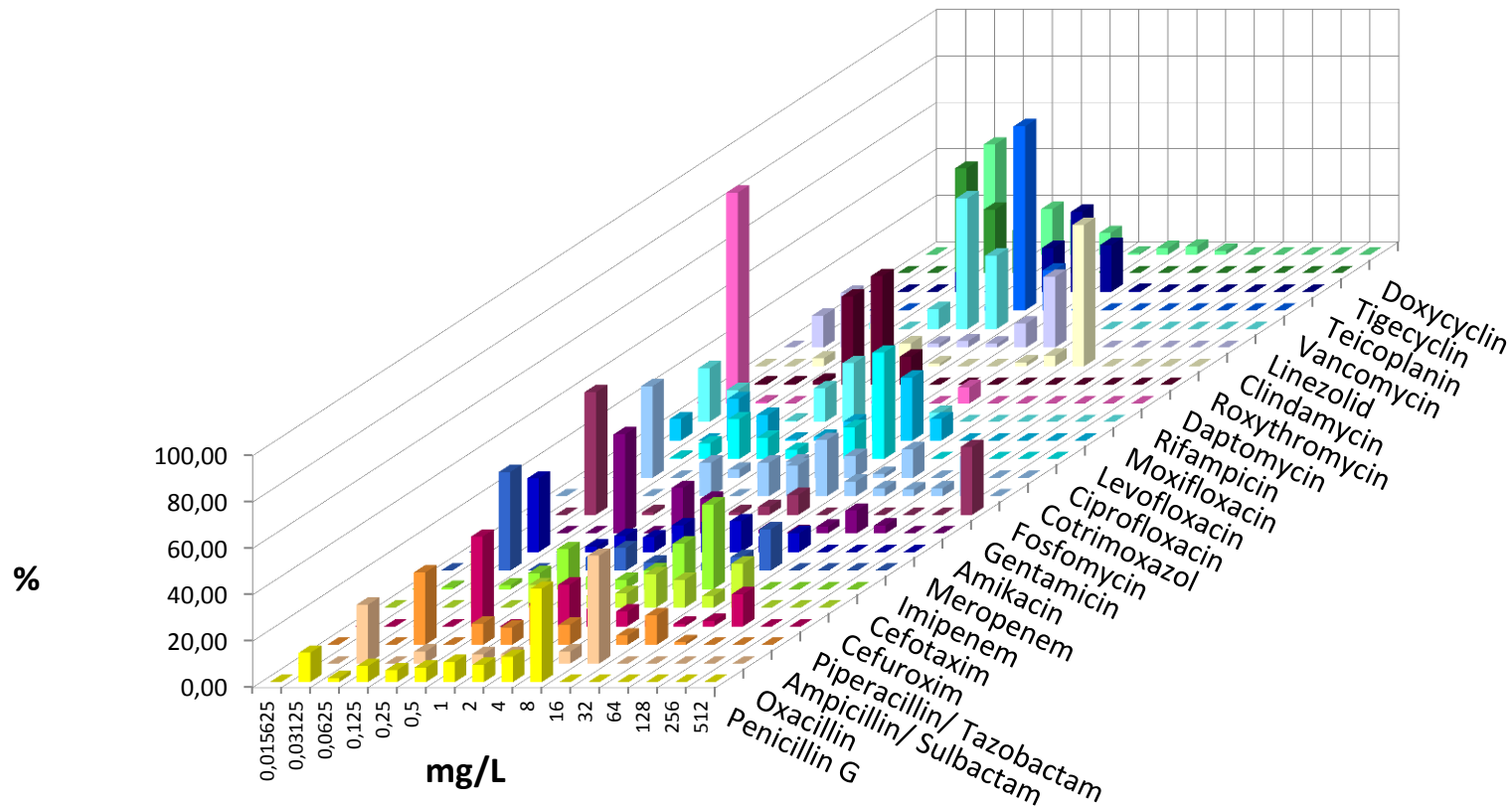
Universitätsklinikum  
Leipzig

Medizin ist unsere Berufung.



ZENTRUM FÜR  
INFEKTIONSMEDIZIN

	PEN	OXA	ASU	PIT	CXM	CTX	IMP	MER	AMK	GEN	FOS	SXT	CIP	LEV	MOX	DOX	RIF	DAP	ROX	CLI	LIN	VAN	TPL	TGC
n	174	174	173	173	174	173	174	173	173	174	173	172	174	173	173	173	174	173	174	174	174	174	174	113
S	21	30							83	57	76	62	39	40	38	91	92	100	33	53	100	100	99	96
I									1			15				1	0		0	2				
R	79	70							16	43	24	23	61	60	62	8	8	0	67	45	0	0	1	4



# Internistische ITS 2017

## Staphylococcus hominis



Universitätsklinikum  
Leipzig

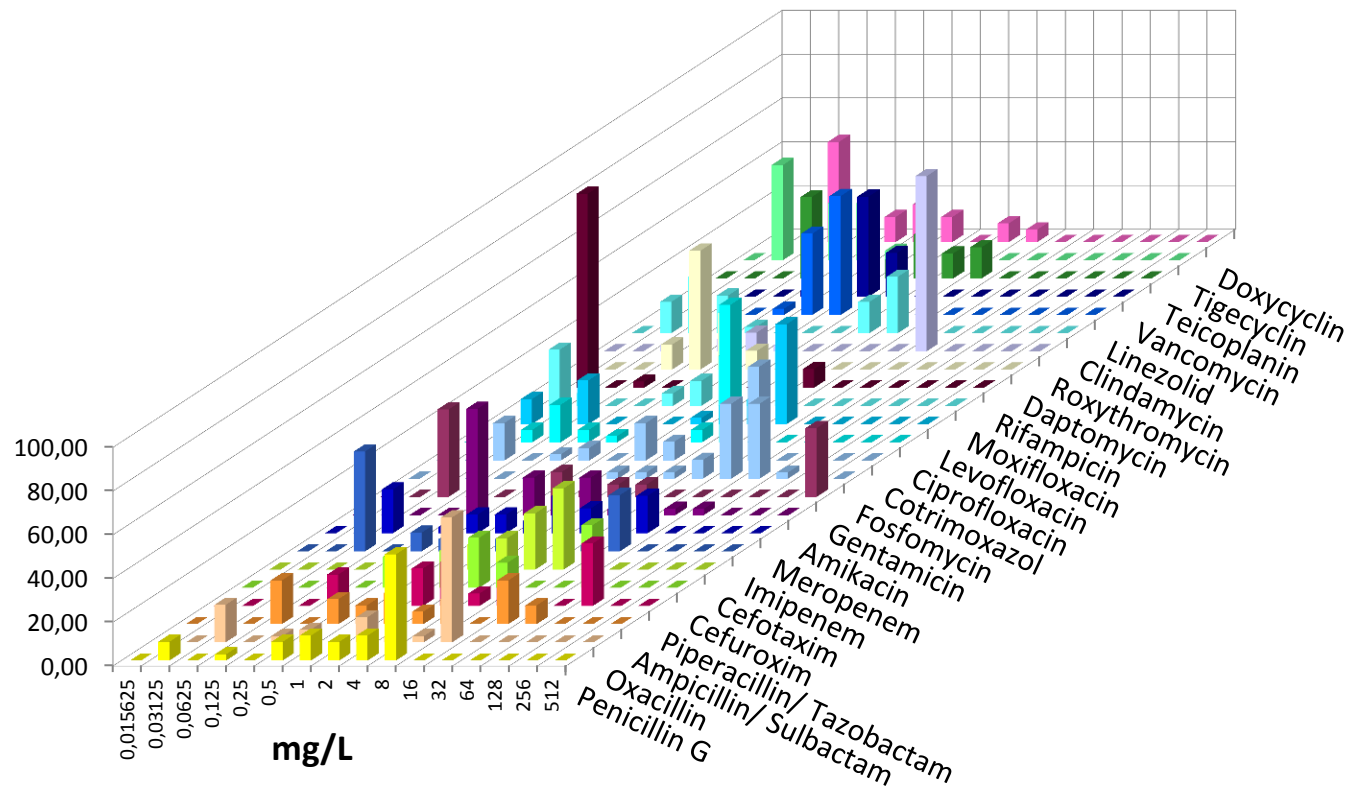
Medizin ist unsere Berufung.



ZENTRUM FÜR  
INFEKTIONSMEDIZIN

	PEN	OXA	ASU	PIT	CXM	CTX	IMP	MER	AMK	GEN	FOS	SXT	CIP	LEV	MOX	DOX	RIF	DAP	ROX	CLI	LIN	VAN	TPL	TGC
n	35	35	35	35	35	35	35	35	35	35	35	35	35	35	35	35	35	35	35	35	35	35	35	23
S	11	20							94	51	51	43	31	31	31	86	89	100	20	60	100	100	86	100
I									0			9				0	3		0	0				
R	89	80							6	46	49	49	69	69	69	14	9	0	80	40	0	0	14	0

%

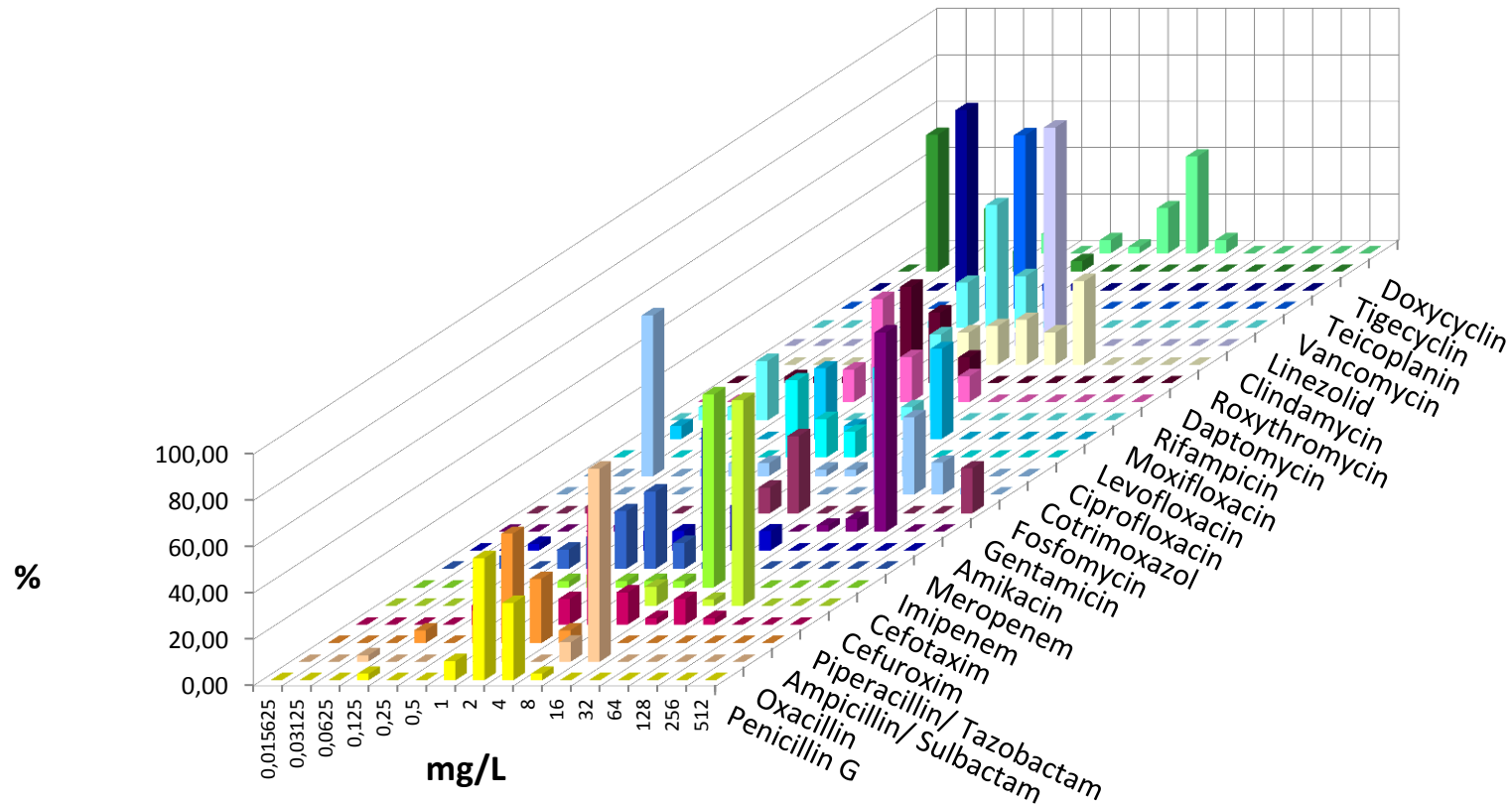


# Internistische ITS 2017

## Enterococcus faecalis



	PEN	OXA	ASU	PIT	CXM	CTX	IMP	MER	AMK	GEN	FOS	SXT	CIP	LEV	MOX	RIF	DAP	ROX	CLI	LIN	VAN	TPL	TGC	DOX
n	36	36	36	36	36	36	36	36	36	36	36	36	36	36	35	36	36	36	35	36	36	36	22	36
S			100				97					0								100	100	100	95	
I			0				3					83											0	
R			0				0					17								0	0	0	5	



# Internistische ITS 2017

## Enterococcus faecium



	PEN	OXA	ASU	PIT	CXM	CTX	IMP	MER	AMK	GEN	FOS	SXT	CIP	LEV	MOX	RIF	DAP	ROX	CLI	LIN	VAN	TPL	TGC	DOX
n	51	51	52	49	51	51	52	51	51	51	50	51	50	50	48	51	51	49	50	52	52	52	34	51
S			4				4					0								100	421	65	97	
I			0				0					63											0	
R			96				96					37								0	35	35	3	

