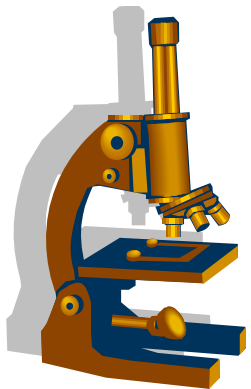




Resistenzepidemiologie 2017

Innere Medizin

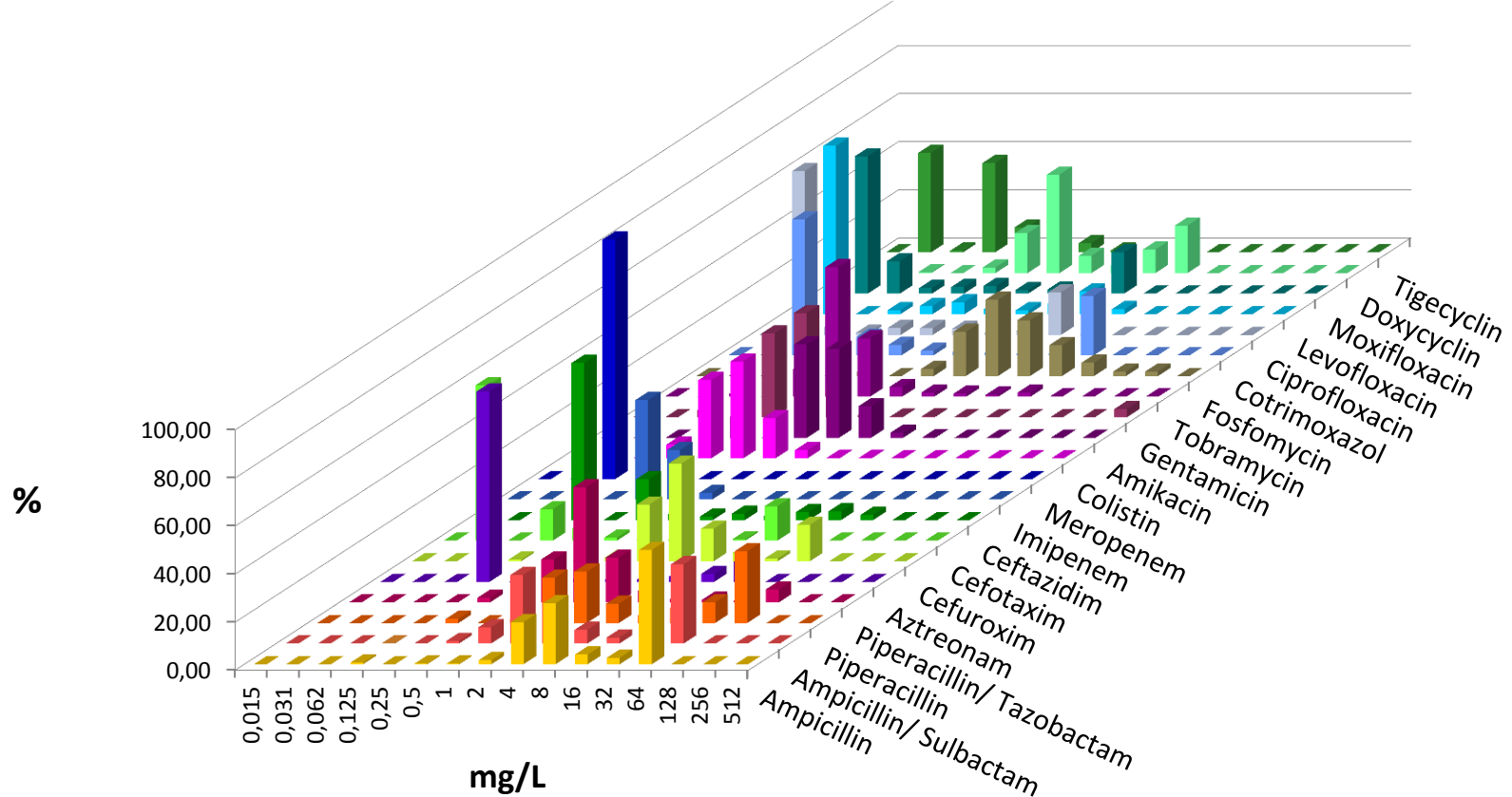
Arne C. Rodloff



Innere 2017

Escherichia coli

	AMP	ASU	PIP	PIT	AZT	CFX	CTX	CAZ	IMP	MER	COL	AMK	GEN	TOB	FOS	SXT	CIP	LEV	MOX	DOX	TIG
n	473	473	473	473	473	474	474	474	474	473	473	473	396	474	474	474	473	473	472	426	473
S	46	59	52	91	84	80	84	85	100	100	100	100	95	94	91	72	75	80	76		99
I			3	1	2		0	1	0	0		0	0	2		1	3	2			1
R	54	41	45	7	14	20	15	14	0	0	0	0	4	4	9	27	22	18	24		0

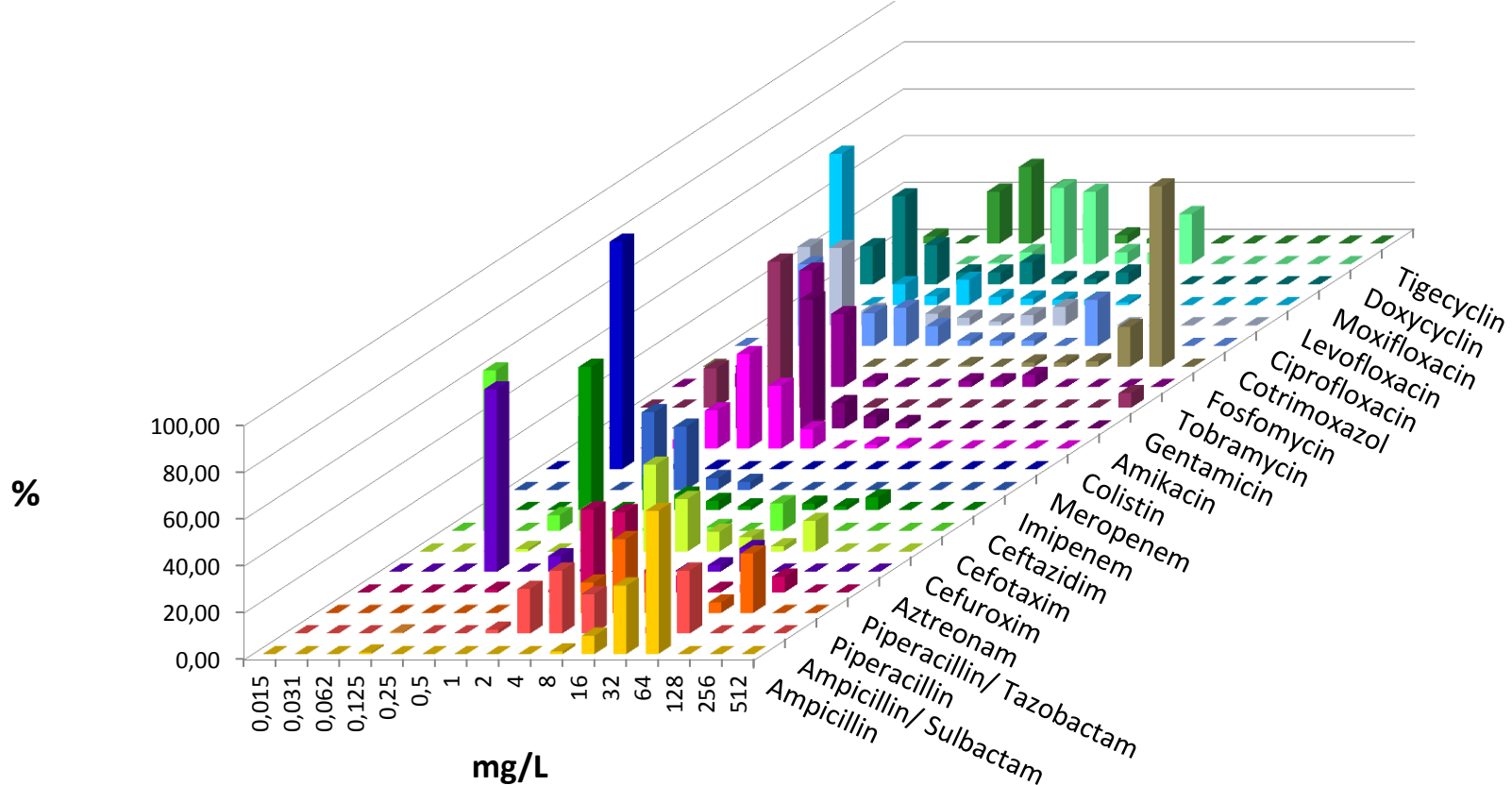


Innere 2017

Klebsiella pneumoniae



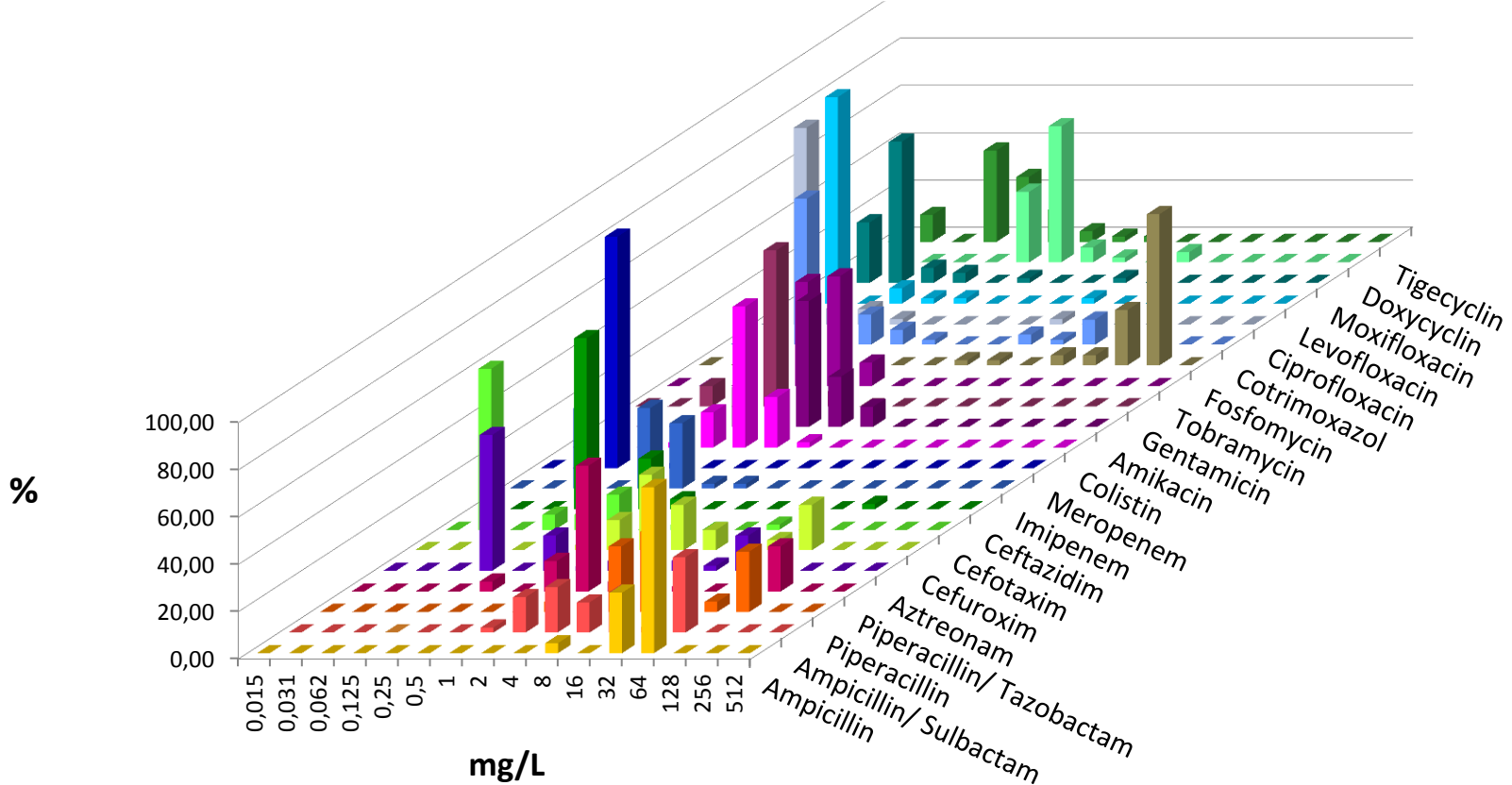
	AMP	ASU	PIP	PIT	AZT	CFX	CTX	CAZ	IMP	MER	COL	AMK	GEN	TOB	FOS	SXT	CIP	LEV	MOX	DOX	TIG
n	178	178	178	178	178	178	178	178	178	178	178	178	157	178	178	178	178	178	178	171	178
S	2	65	46	81	86	79	87	83	100	100	97	100	93	90	4	76	78	88	76		95
I			17	7	1		0	4	0	0		0	0	0		2	5	3			4
R	98	35	37	11	13	21	13	13	0	0	3	0	7	10	96	22	17	8	24		2



Innere 2017

Klebsiella oxytoca

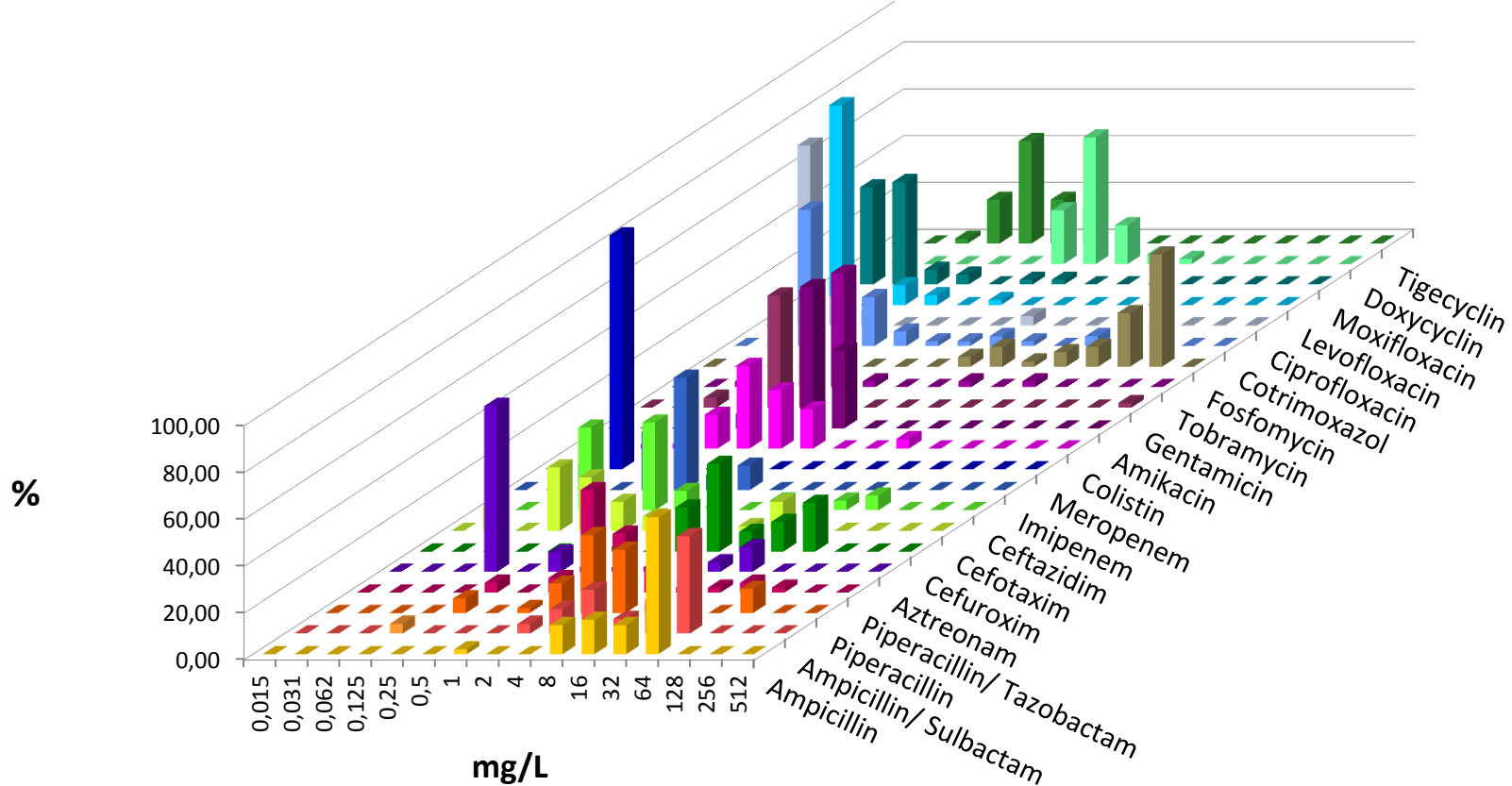
	AMP	ASU	PIP	PIT	AZT	CFX	CTX	CAZ	IMP	MER	COL	AMK	GEN	TOB	FOS	SXT	CIP	LEV	MOX	DOX	TIG
n	47	47	47	47	47	47	47	47	47	47	47	47	41	47	47	47	47	47	47	44	47
S	4	49	34	77	74	74	96	98	100	100	100	100	100	100	9	83	98	98	96		95
I			34	2	4		2	0	0	0		0	0	0		0	0	0			2
R	96	51	32	21	21	26	2	2	0	0	0	0	0	0	91	17	2	2	4		2



Innere 2017

Enterobacter cloacae

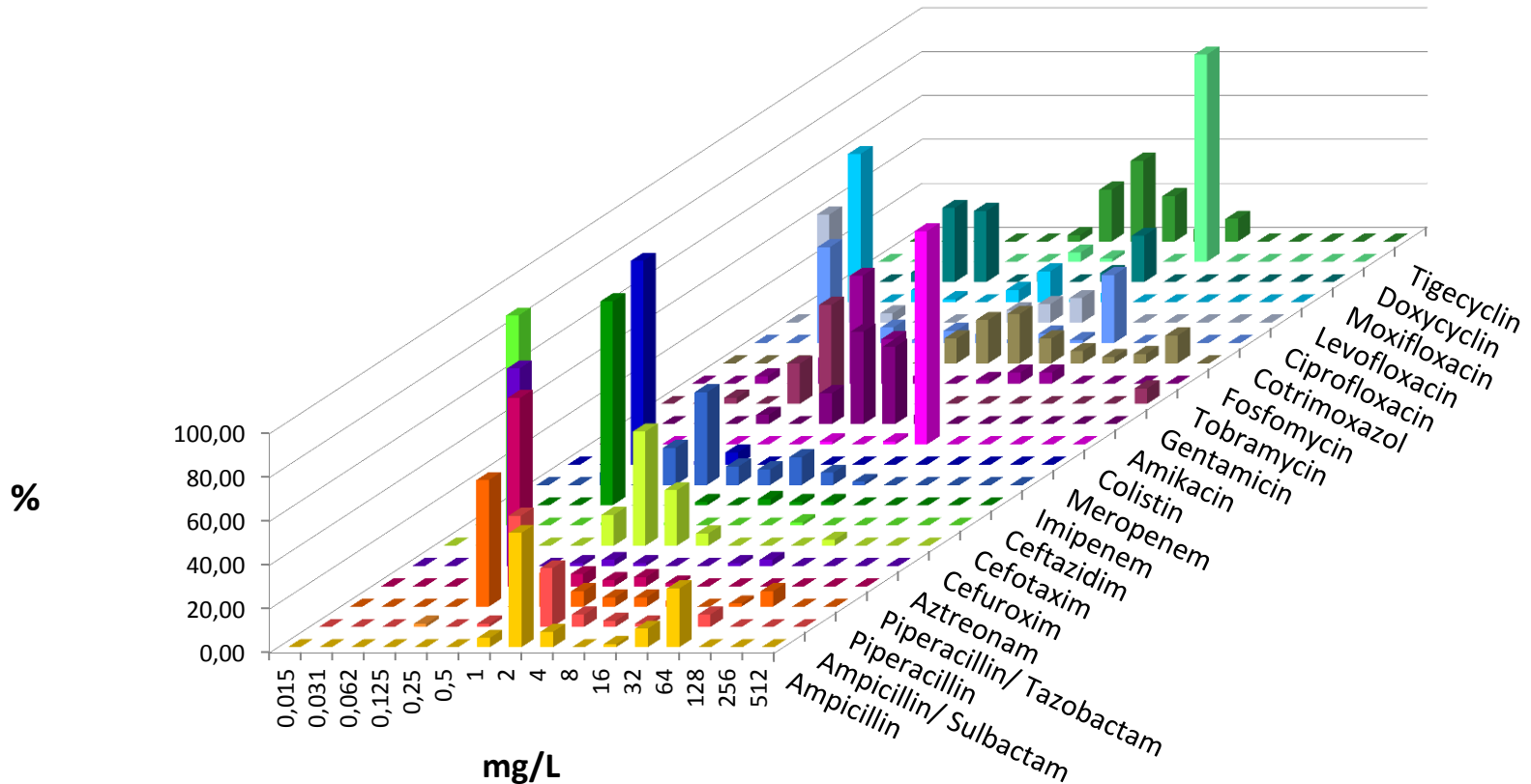
	AMP	ASU	PIP	PIT	AZT	CFX	CTX	CAZ	IMP	MER	COL	AMK	GEN	TOB	FOS	SXT	CIP	LEV	MOX	DOX	TIG
n	48	48	48	48	48	48	48	48	48	48	48	48	41	48	48	48	48	48	48	48	48
S	15	38	81	90	81	58	79	81	100	100	96	100	98	95	21	90	96	98	96		98
I			4	2	4		4	2	0	0		0	0	0		4	0	2			2
R	85	63	15	8	15	42	17	17	0	0	4	0	2	5	79	6	4	0	4		0



Innere 2017

Proteus mirabilis

	AMP	ASU	PIP	PIT	AZT	CFX	CTX	CAZ	IMP	MER	COL	AMK	GEN	TOB	FOS	SXT	CIP	LEV	MOX	DOX	TIG
n	71	71	71	71	71	71	71	71	71	71	71	71	59	71	71	71	71	71	71	68	71
S	63	89	89	100	94	97	99	94	80	100	1	100	90	88	80	62	75	75	70		26
I			3	0	1		0	0	18	0		0	0	0		1	0	6			37
R	37	11	8	0	4	3	1	6	1	0	99	0	7	12	20	37	25	20	30		37



Innere 2017

Pseudomonas aeruginosa



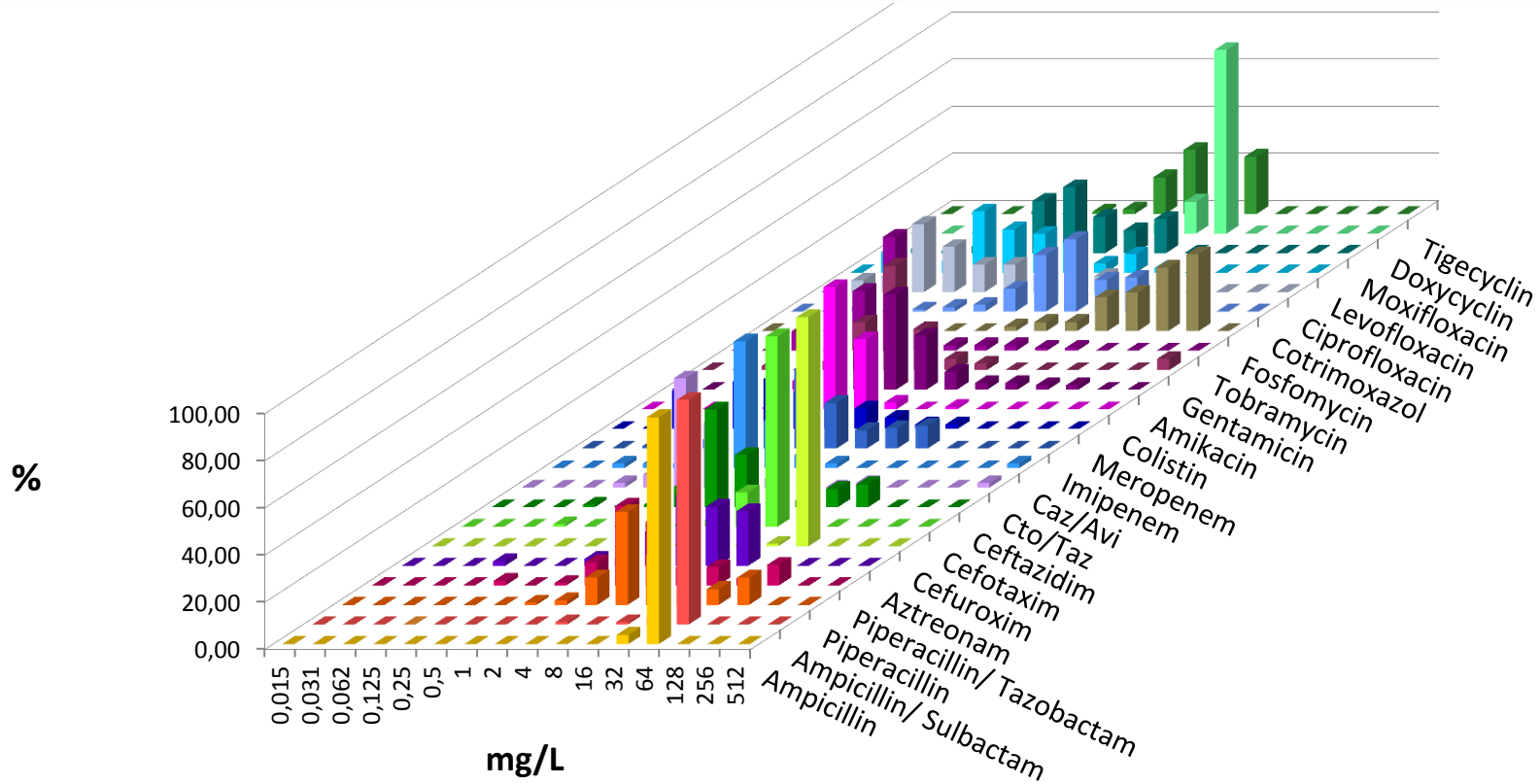
Universitätsklinikum
Leipzig

Medizin ist unsere Berufung.



ZENTRUM FÜR
INFEKTIONSMEZIN

	AMP	ASU	PIP	PIT	AZT	CFX	CTX	CAZ	CTO/ TAZ	CAZ/ AVI	IMP	MER	COL	AMK	GEN	TOB	FOS	SXT	CIP	LEV	MOX	DOX	TIG	
n	104	104	104	104	104	104	104	104	54	54	104	104	104	104	104	87	104	104	104	104	104	104	103	
S			75	81	5			80	96	98	74	83	96	90	92	95			71	74				
I					72						8	13		3										
R			25	19	23			20	4	2	18	4	4	7	8	5			29	26				



Innere 2017

Acinetobacter baumannii



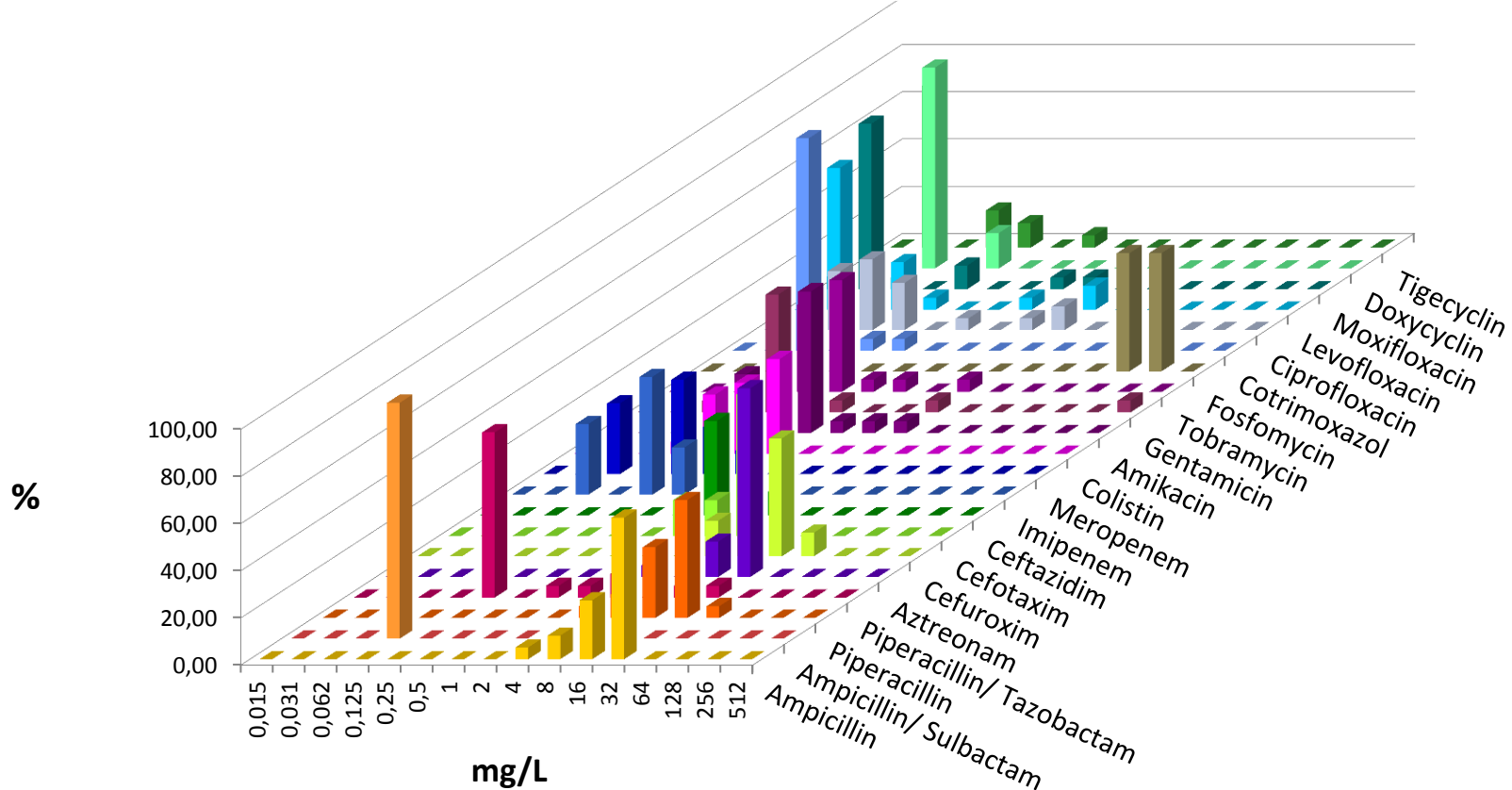
Universitätsklinikum
Leipzig

Medizin ist unsere Berufung.



ZENTRUM FÜR
INFEKTIONSMEZIN

	AMP	ASU	PIP	PIT	AZT	CFX	CTX	CAZ	IMP	MER	COL	AMK	GEN	TOB	FOS	SXT	CIP	LEV	MOX	DOX	TIG
n	20	20	20	20	20	20	20	20	20	20	20	20	20	19	20	20	20	20	20	20	19
S									100	100	100	100	90	95		100	85	85			
I									0	0		0				0		0			
R									0	0	0	0	10	5		0	15	15			



Innere 2017

Stenotrophomonas maltophilia



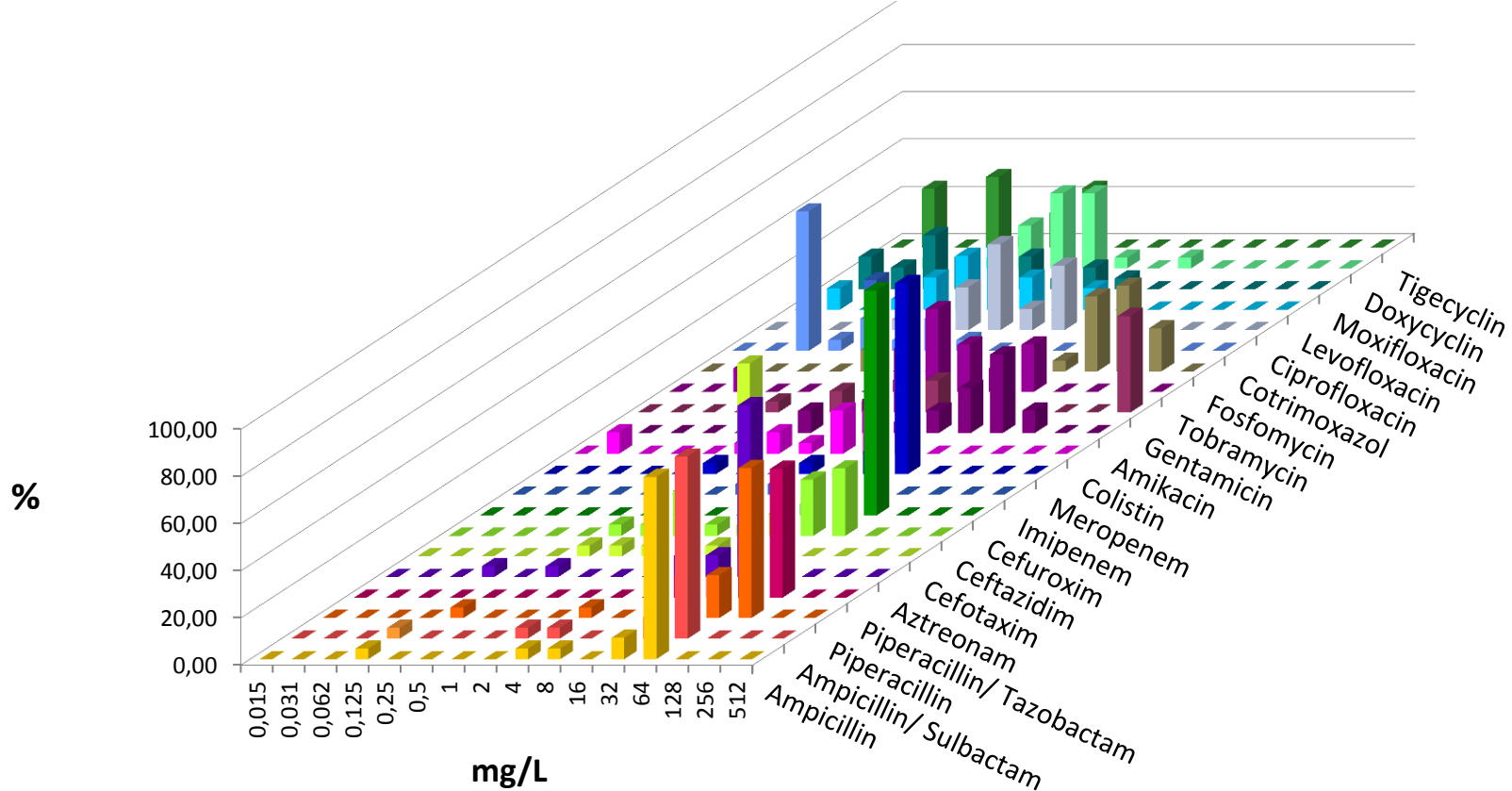
**Universitätsklinikum
Leipzig**

Medizin ist unsere Berufung.



ZENTRUM FÜR
INFEKTIONSMEZIN

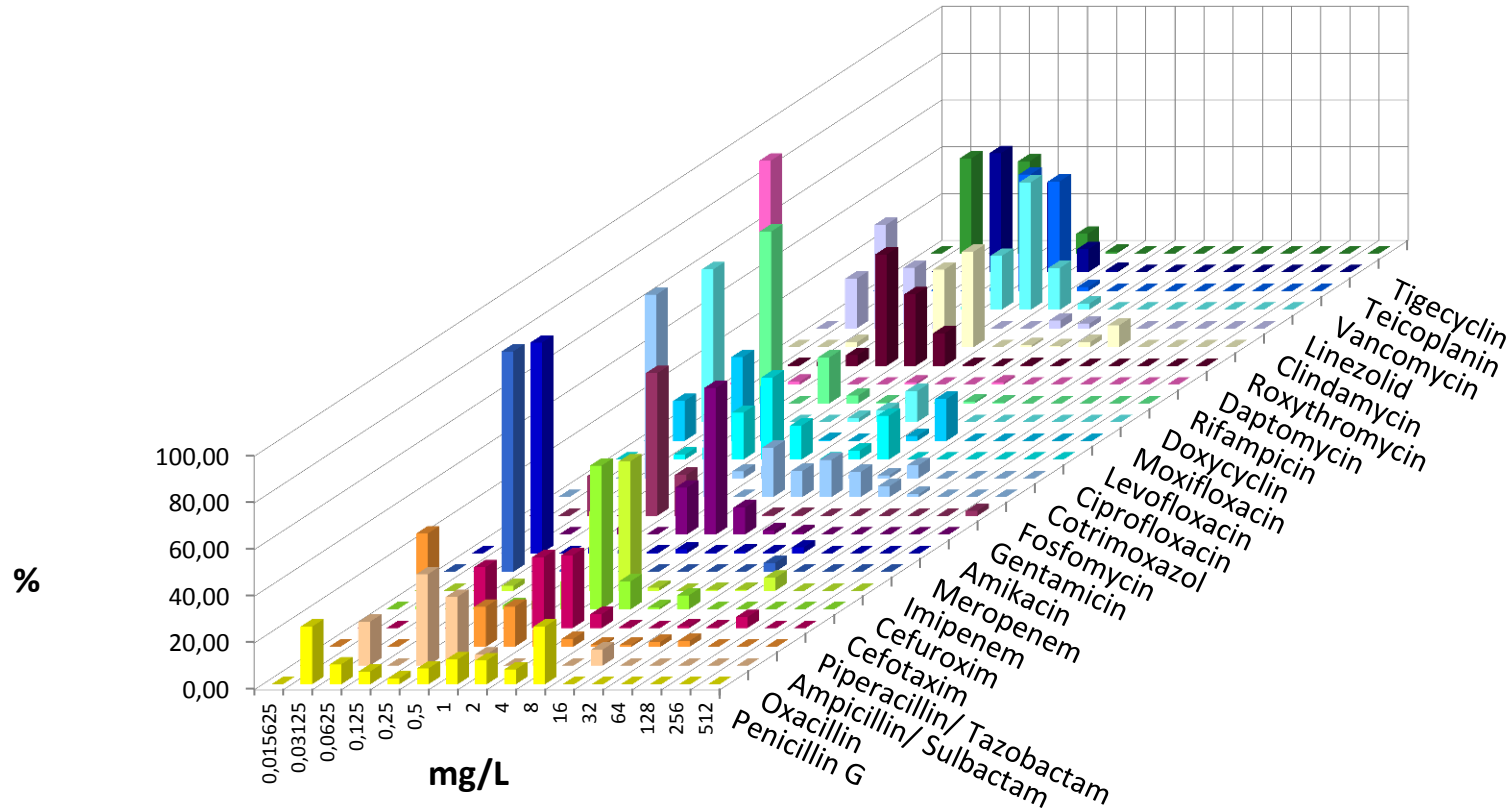
	AMP	ASU	PIP	PIT	AZT	CFX	CTX	CAZ	IMP	MER	COL	AMK	GEN	TOB	FOS	SXT	CIP	LEV	MOX	DOX	TIG
n	22	22	22	22	22	21	22	21	22	21	22	21	22	20	22	22	22	22	22	22	20
S																100					
I																					
R																0					



Innere 2017

Staphylococcus aureus

	PEN	OXA	ASU	PIT	CXM	CTX	IMP	MER	AMK	GEN	FOS	SXT	CIP	LEV	MOX	DOX	RIF	DAP	ROX	CLI	LIN	VAN	TPL	TGC
n	235	235	233	234	235	234	234	235	234	234	233	234	234	234	234	234	235	235	235	235	235	235	234	155
S	39	92							99	96	99	91	77	79	78	97	98	99	87	94	100	100	100	99
I									1			0				1	0		0	1				
R	61	8							0	4	1	8	23	21	22	2	2	1	13	6	0	0	0	1

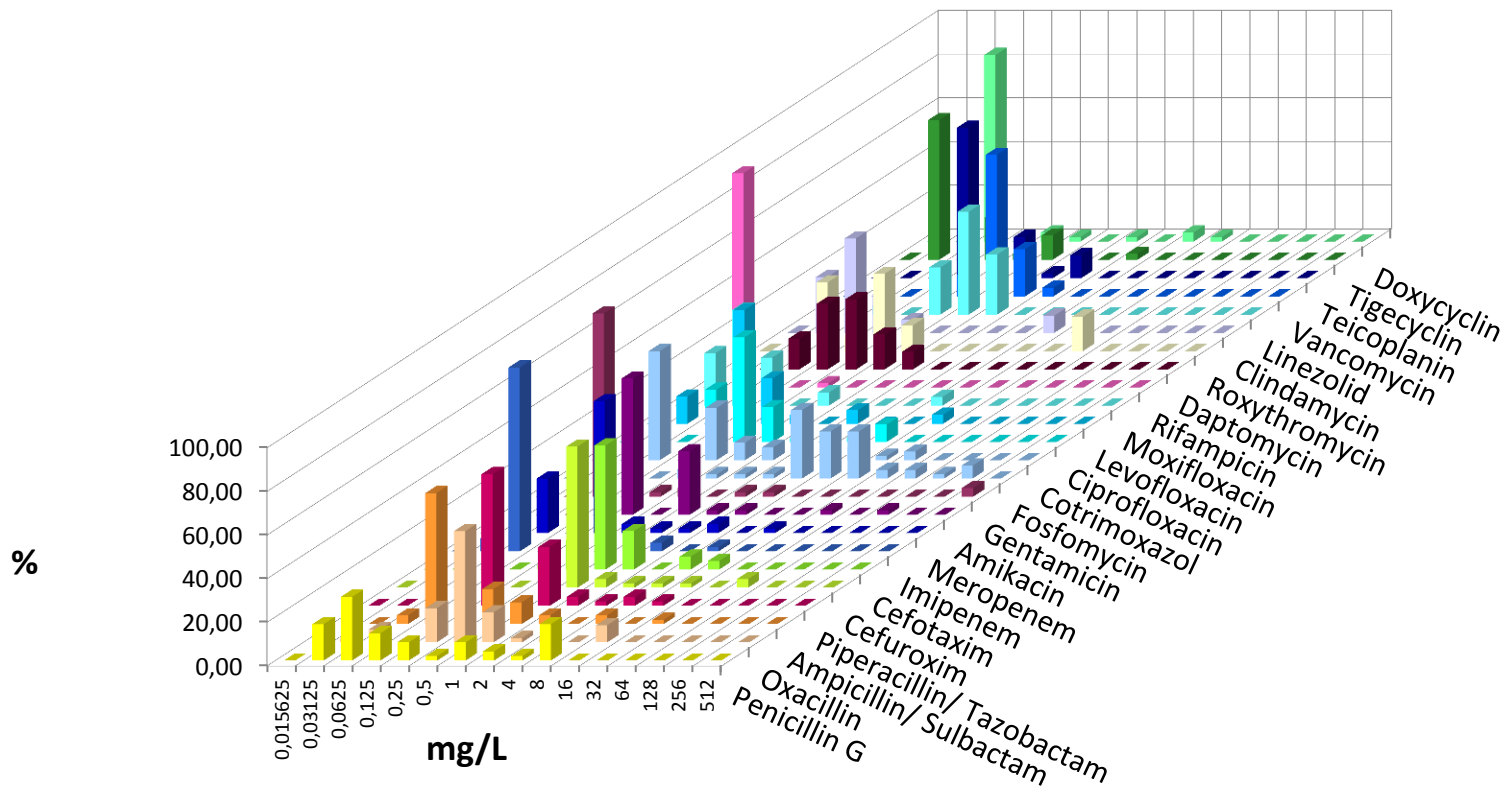


Innere 2017

Staphylococcus lugdunensis



	PEN	OXA	ASU	PIT	CXM	CTX	IMP	MER	AMK	GEN	FOS	SXT	CIP	LEV	MOX	DOX	RIF	DAP	ROX	CLI	LIN	VAN	TPL	TGC	
n	48	51	50	48	51	51	51	48	48	50	51	50	50	48	50	48	51	50	51	51	51	51	48	36	
S	58	24							96	90	88	88	90	90	90	92	98	100	84	92	100	100	100	97	
I									0			0				2	2		0	0					
R	42	76							4	8	12	12	10	10	10	6	0	0	16	8	0	0	0	3	



Innere 2017

Staphylococcus epidermidis



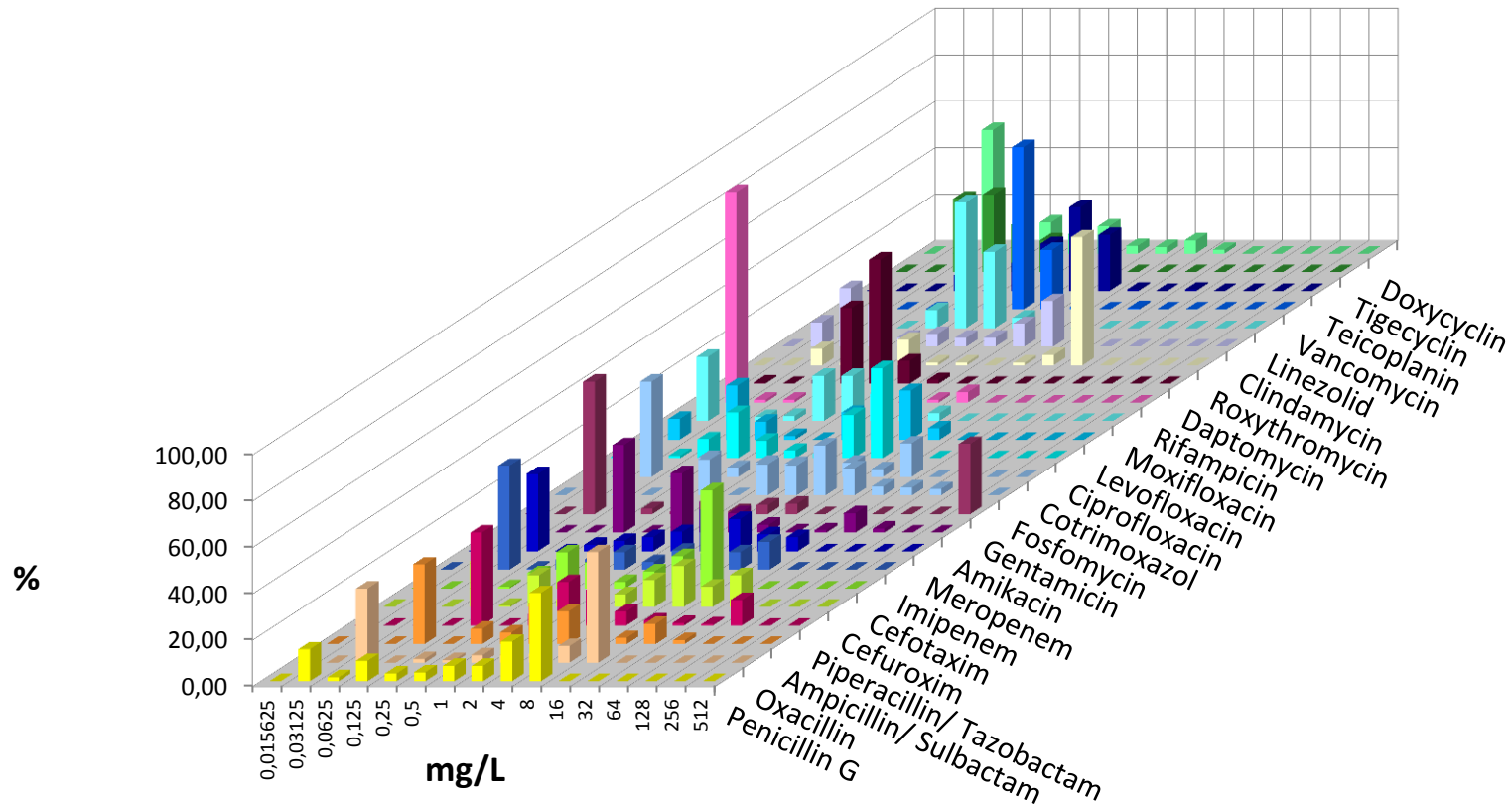
**Universitätsklinikum
Leipzig**

Medizin ist unsere Berufung.



ZENTRUM FÜR
INFEKTIONSMEZIN

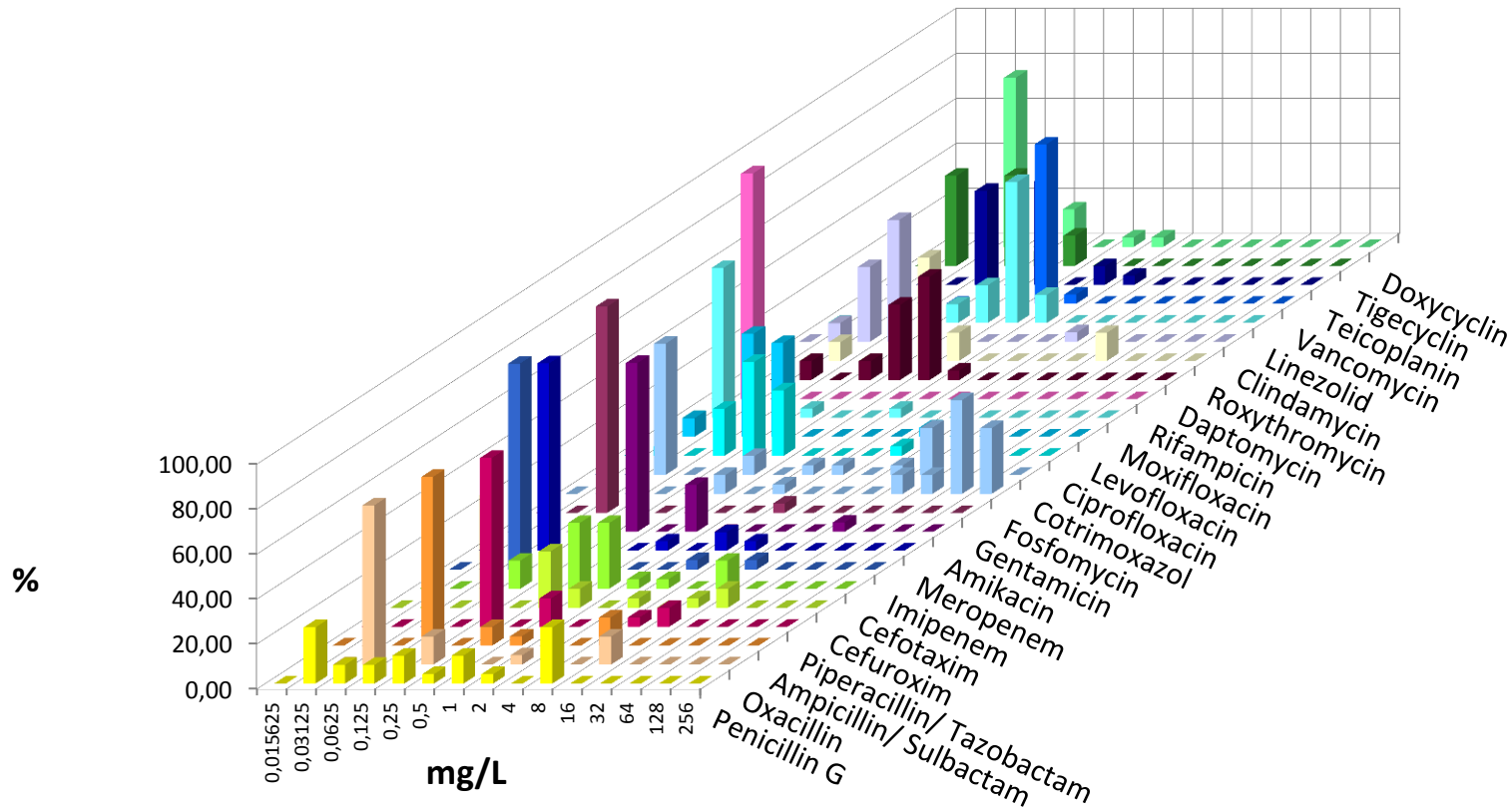
	PEN	OXA	ASU	PIT	CXM	CTX	IMP	MER	AMK	GEN	FOS	SXT	CIP	LEV	MOX	DOX	RIF	DAP	ROX	CLI	LIN	VAN	TPL	TGC
n	181	182	183	182	182	180	183	180	180	182	181	180	183	180	180	180	183	183	183	183	183	183	183	117
S	24	34							88	60	79	65	40	42	44	87	93	98	38	57	100	99	99	99
I									1			11				3	1		1	5				
R	76	66							11	40	21	24	60	58	56	10	6	2	61	37	0	1	1	1



Innere 2017

Staphylococcus capitis

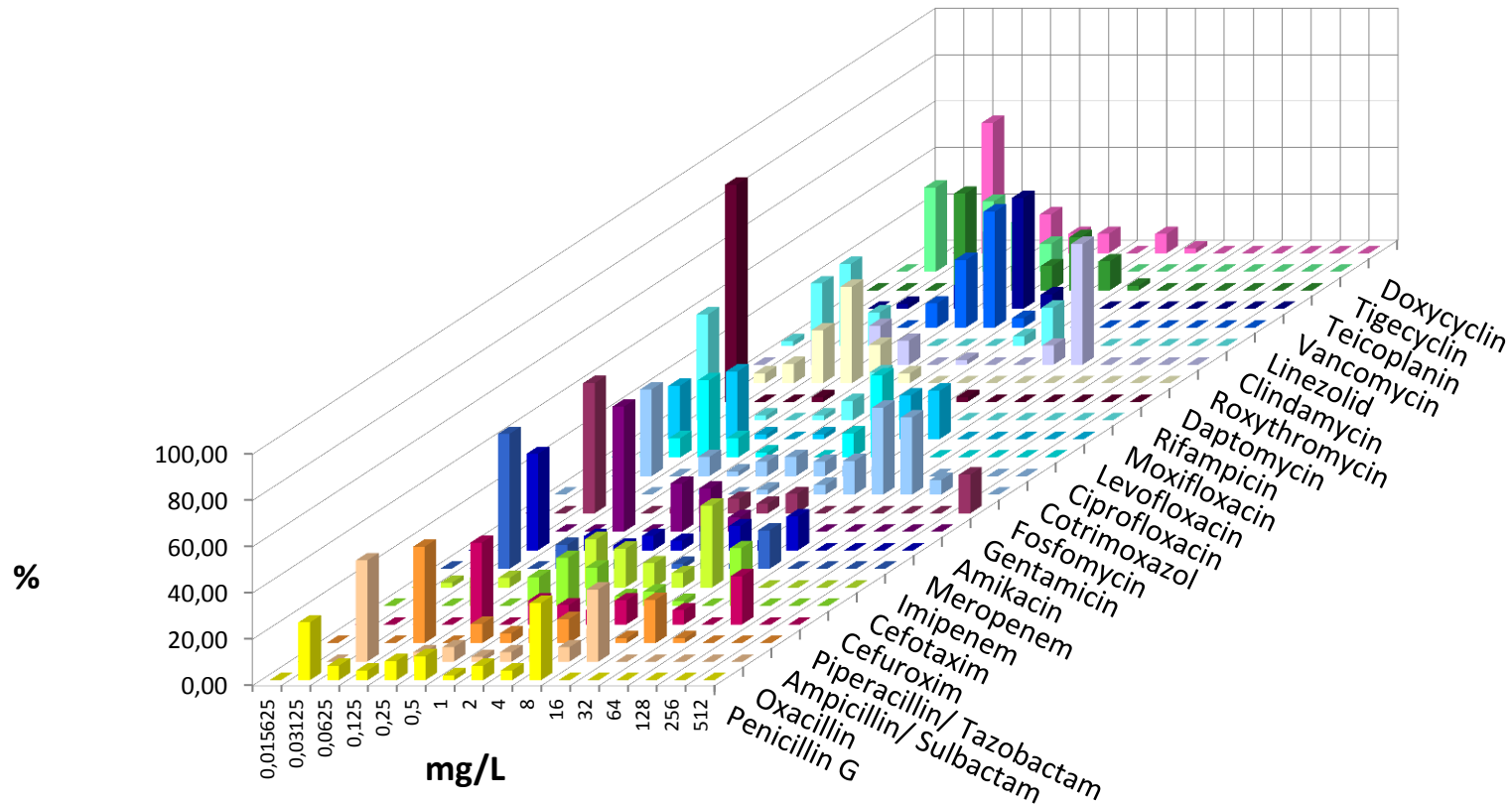
	PEN	OXA	ASU	PIT	CXM	CTX	IMP	MER	AMK	GEN	FOS	SXT	CIP	LEV	MOX	DOX	RIF	DAP	ROX	CLI	LIN	VAN	TPL	TGC
n	24	24	24	24	24	24	24	24	24	24	24	24	24	24	24	24	24	24	24	24	24	24	24	15
S	42	83							96	92	21	71	96	96	96	96	100	96	88	96	100	100	100	100
I									0			4				4	0		0	0				
R	58	17							4	8	79	25	4	4	4	0	0	4	13	4	0	0	0	0



Innere 2017

Staphylococcus hominis

	PEN	OXA	ASU	PIT	CXM	CTX	IMP	MER	AMK	GEN	FOS	SXT	CIP	LEV	MOX	DOX	RIF	DAP	ROX	CLI	LIN	VAN	TPL	TGC
n	48	48	48	48	48	48	48	48	48	48	48	48	48	48	48	48	48	48	48	48	48	48	48	33
S	35	48							100	65	60	63	54	58	56	90	96	100	38	79	100	100	98	100
I									0			6				0	2		2	0				
R	65	52							0	35	40	31	46	42	44	10	2	0	60	21	0	0	2	0

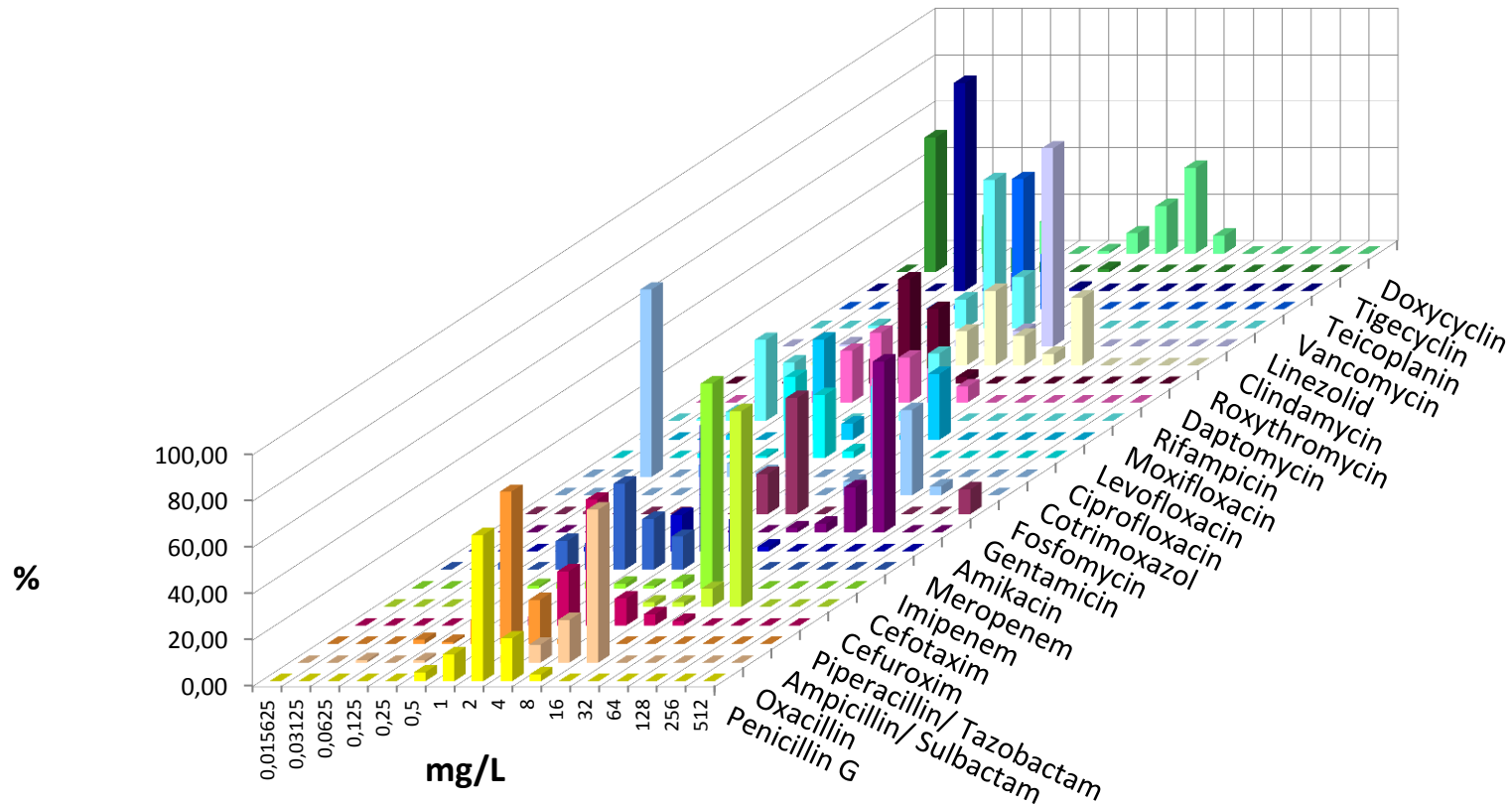


Innere 2017

Enterococcus faecalis



	PEN	OXA	ASU	PIT	CXM	CTX	IMP	MER	AMK	GEN	FOS	SXT	CIP	LEV	MOX	RIF	DAP	ROX	CLI	LIN	VAN	TPL	TGC	DOX	
n	103	103	105	103	103	103	105	103	103	104	103	104	103	102	103	103	102	103	103	105	105	105	69	103	
S			100				100					0								100	100	100	94		
I			0				0					93												4	
R			0				0					7									0	0	0	1	



Innere 2017

Streptococcus pneumoniae



Universitätsklinikum
Leipzig

Medizin ist unsere Berufung.



ZENTRUM FÜR
INFEKTIONSMEZIN

	PEN	CFX	CTX	MOX	ERY
n	51	51	51	51	51
S	96	100	100	96	94
I	4	0	0		0
R	0	0	0	4	6

