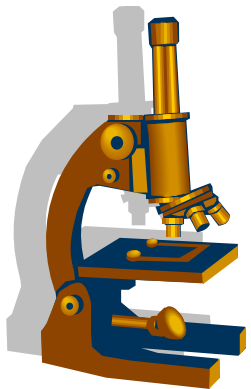




# Resistenzepidemiologie 2016

## Chirurgische Intensivstation

Arne C. Rodloff

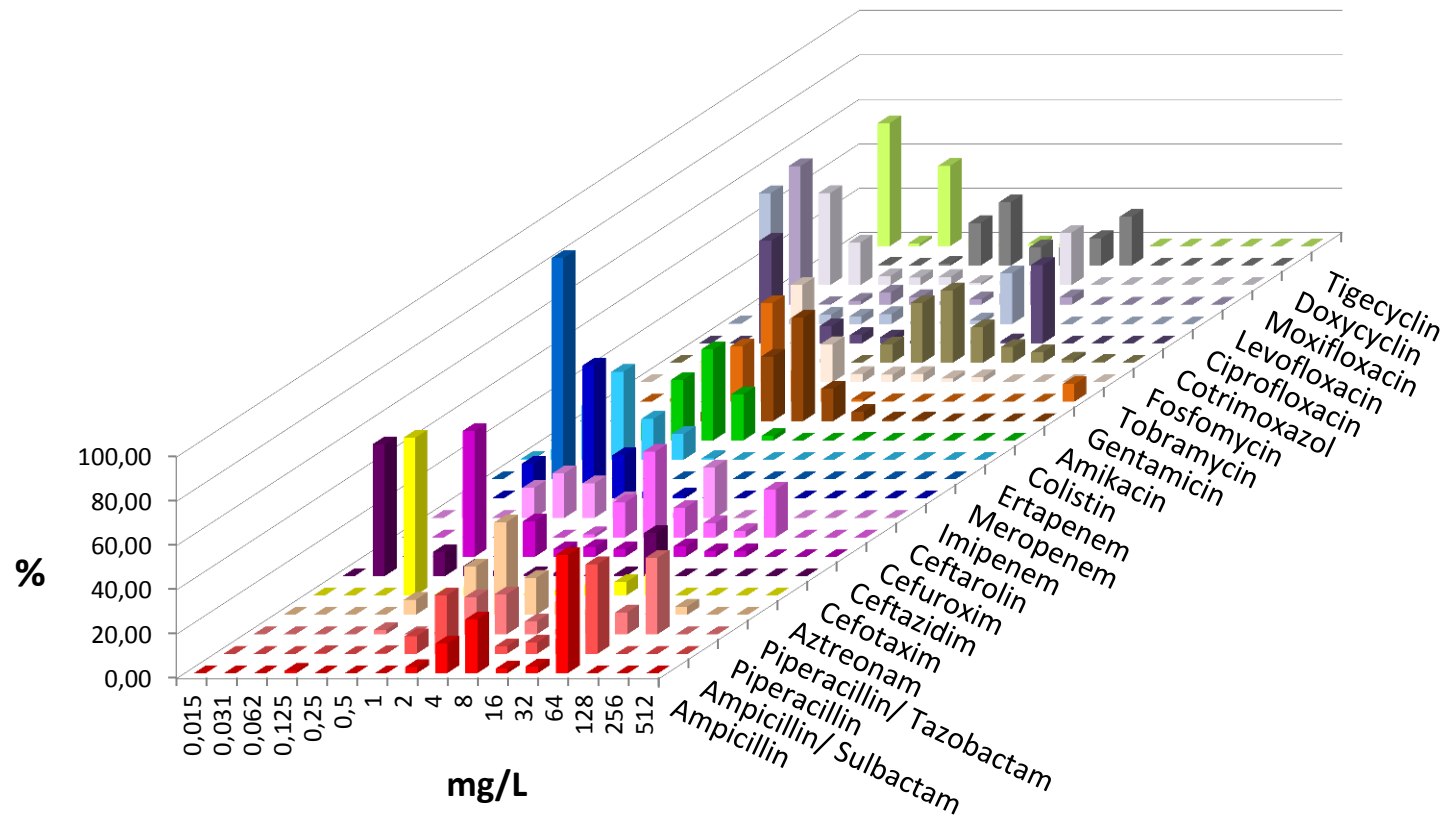


# UKL chirurgische ITS 2016

## Escherichia coli



	AMP	ASU	PIP	PIT	AZT	CTX	CAZ	CFX	CTA	IMP	MER	ERT	COL	AMK	GEN	TOB	FOS	SXT	CIP	LEV	MOX	DOX	TIG
n	292	292	292	292	292	292	292	292	288	292	292	292	292	292	292	290	263	292	292	292	292	291	83
S	41	48	44	93	77	78	76	69	61	100	100	99	100	99	91	89	93	62	69	73	68		99
I			2	2	3	1	4			0	0	1		1	1	3		1	4	1			1
R	59	52	54	5	21	21	19	31	39	0	0	0	0	1	8	8	7	37	27	25	32		0

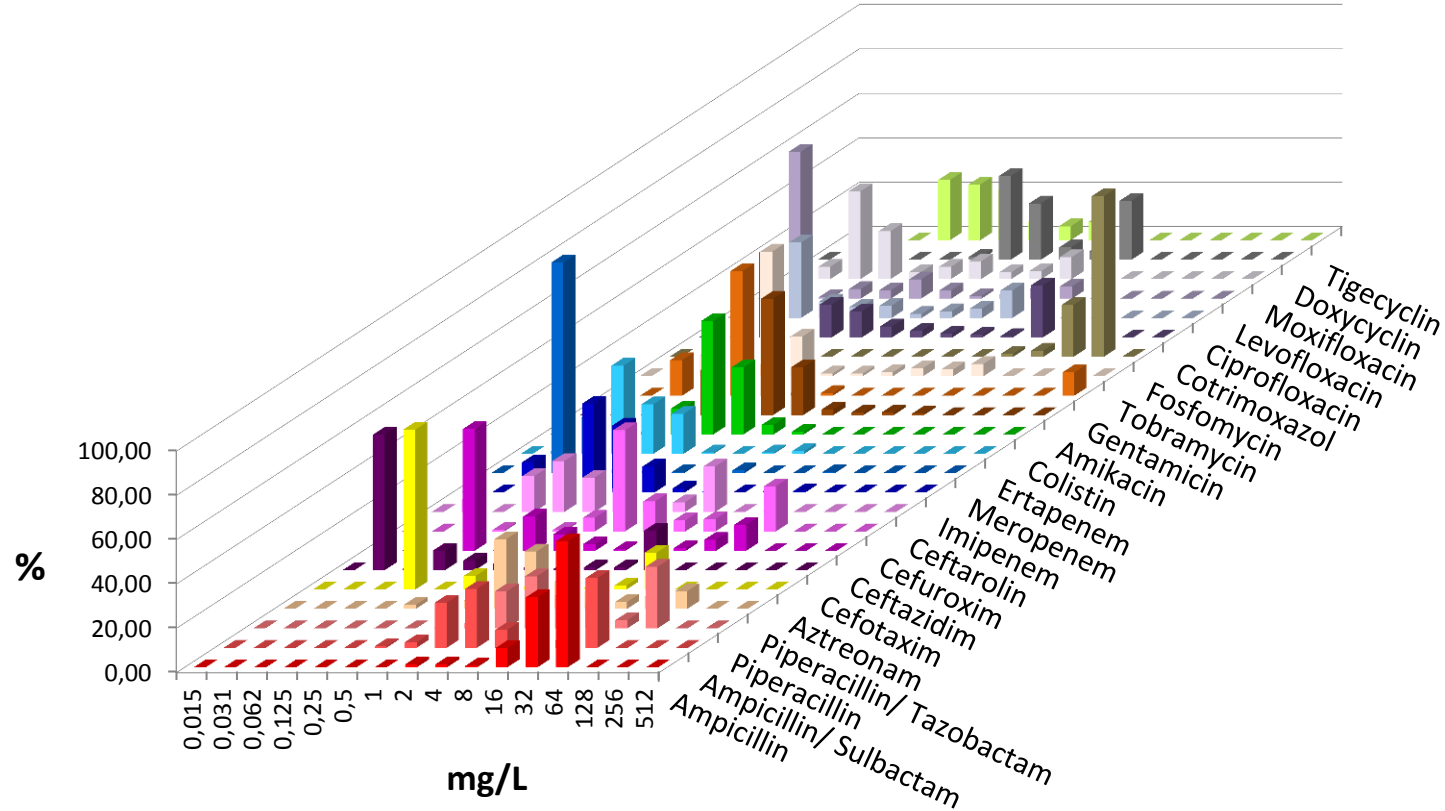


# UKL chirurgische ITS 2016

## Klebsiella pneumoniae



	AMP	ASU	PIP	PIT	AZT	CTX	CAZ	CFX	CTA	IMP	MER	ERT	COL	AMK	GEN	TOB	FOS	SXT	CIP	LEV	MOX	DOX	TIG
n	162	162	162	162	162	162	162	162	161	162	162	161	162	162	162	162	141	162	162	162	162	162	48
S	3	58	43	75	79	79	78	72	60	98	98	98	99	98	89	86	1	73	73	83	70		83
I			15	8	2	1	3			1	1	1		1	0	2		2	6	4			6
R	97	42	43	17	19	20	19	28	40	1	1	2	1	1	10	12	99	25	22	13	30		10

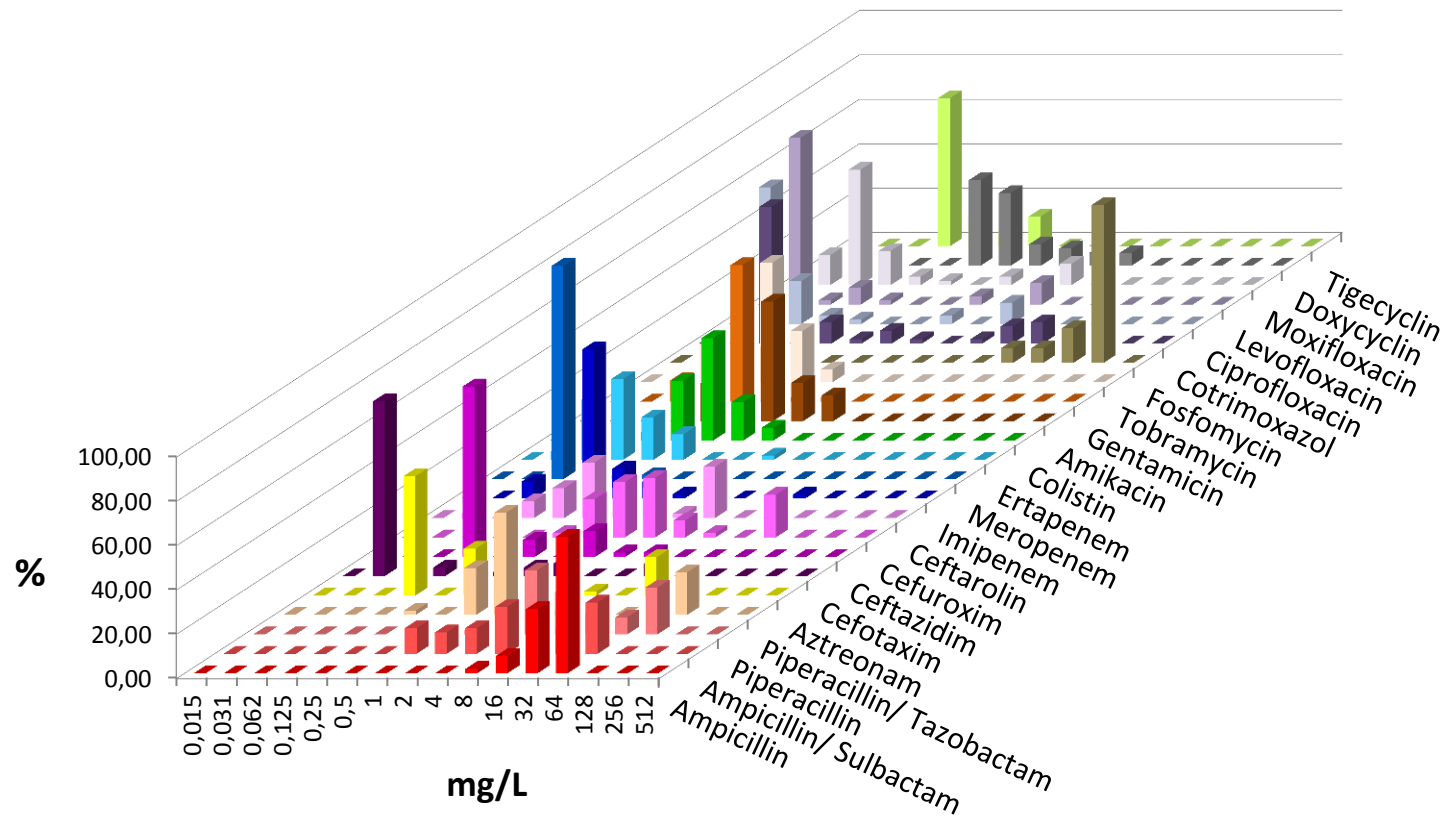


# UKL chirurgische ITS 2016

## Klebsiella oxytoca



	AMP	ASU	PIP	PIT	AZT	CTX	CAZ	CFX	CTA	IMP	MER	ERT	COL	AMK	GEN	TOB	FOS	SXT	CIP	LEV	MOX	DOX	TIG	
n	52	52	52	52	52	52	52	52	52	52	52	52	52	52	52	52	45	52	52	52	52	52	15	
S	2	54	42	81	81	88	85	79	48	98	100	98	100	100	100	100	7	81	87	87	85		100	
I			19	0	0	6	12			0	0	0		0	0	0		0	0	0				0
R	98	46	38	19	19	6	4	21	52	2	0	2	0	0	0	0	93	19	13	13	15		0	

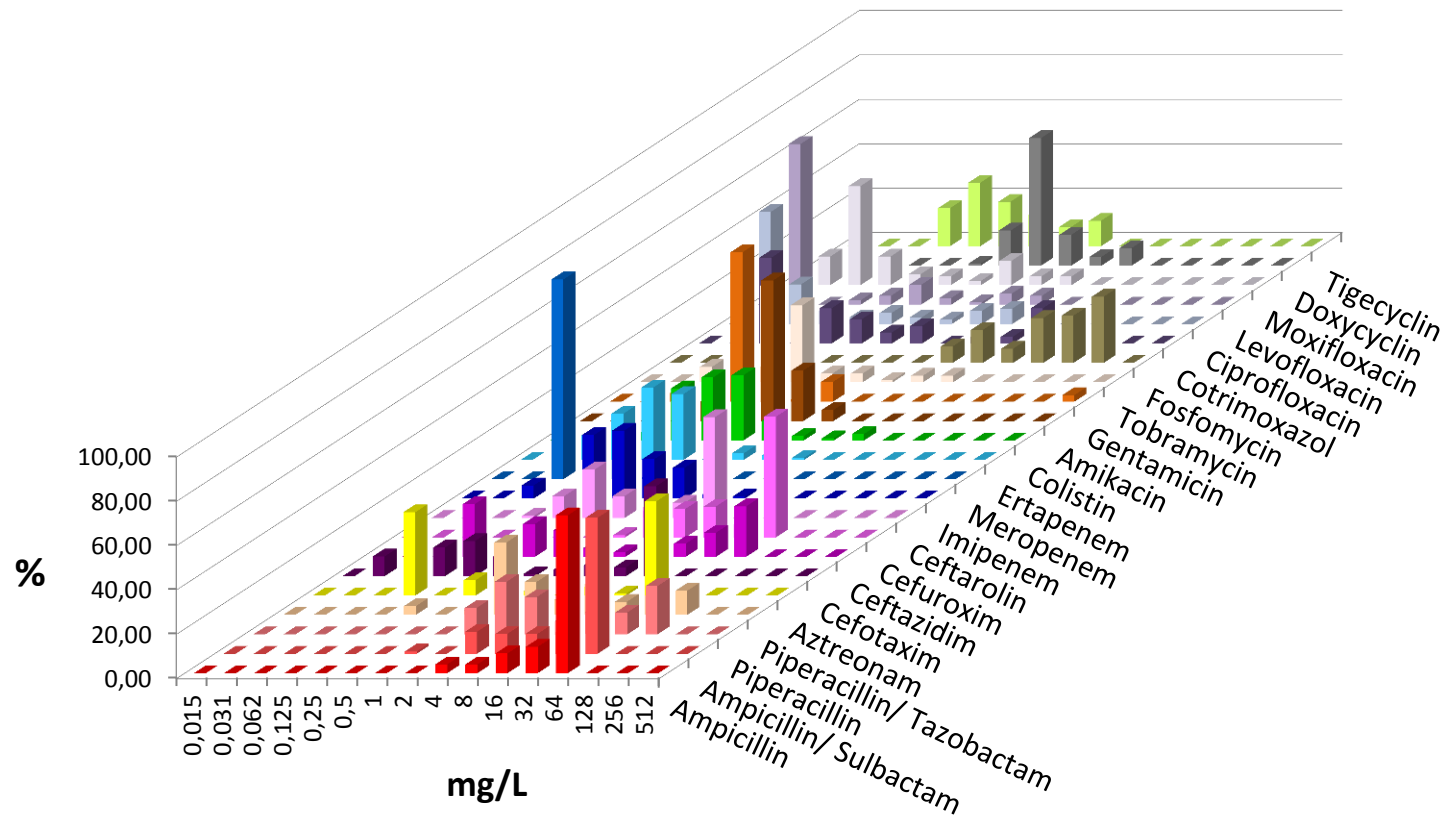


# UKL chirurgische ITS 2016

## Enterobacter cloacae



	AMP	ASU	PIP	PIT	AZT	CTX	CAZ	CFX	CTA	IMP	MER	ERT	COL	AMK	GEN	TOB	FOS	SXT	CIP	LEV	MOX	DOX	TIG
n	101	101	101	101	101	101	101	101	101	101	101	101	102	101	101	101	94	101	101	101	101	101	35
S	8	20	52	60	50	48	50	26	33	97	100	94	94	100	97	93	29	78	77	87	75		80
I			6	14	2	3	4			3	0	0		0	0	1		0	5	3			9
R	92	80	42	26	48	50	46	74	67	0	0	6	6	0	3	6	71	22	18	10	25		11

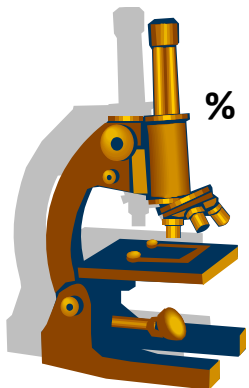
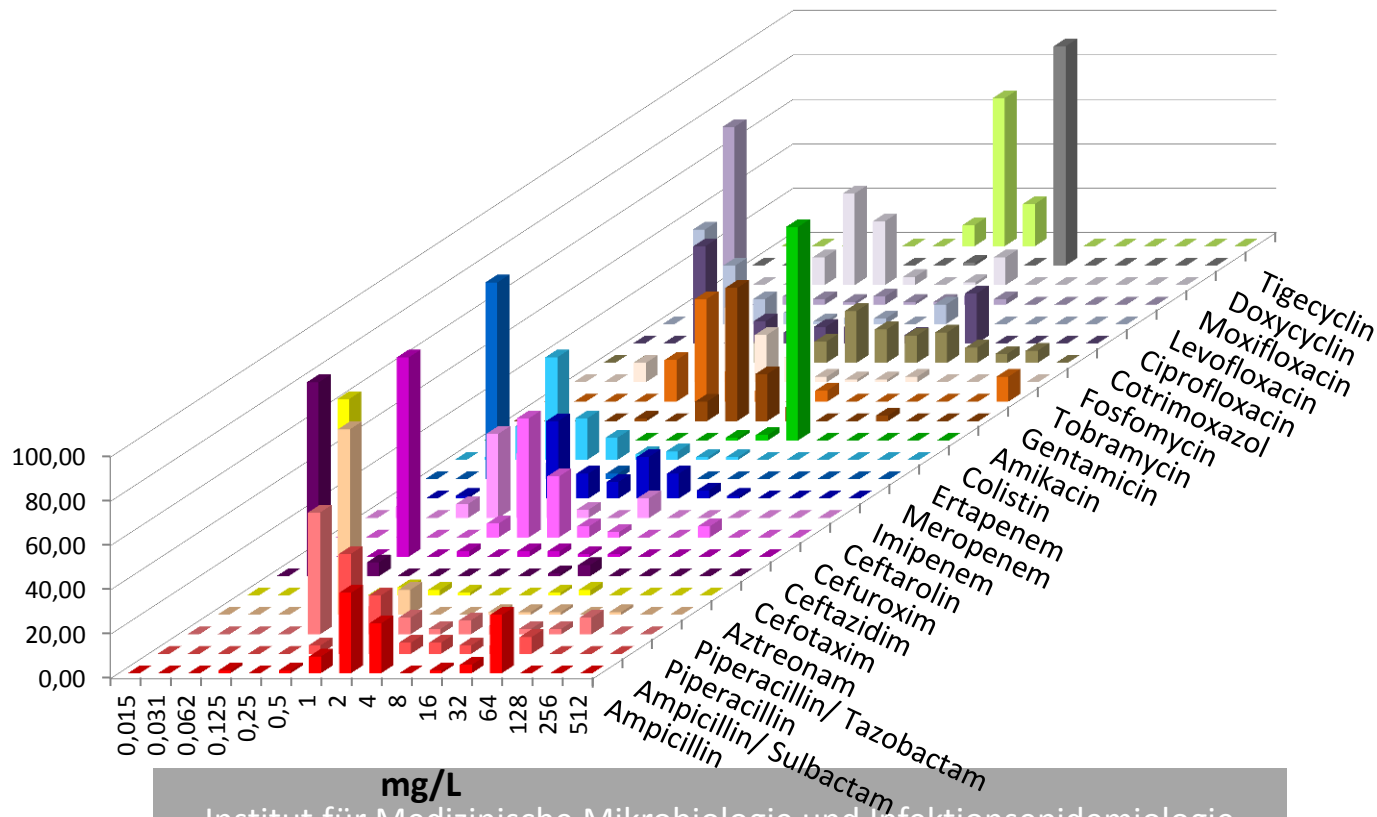


# UKL chirurgische ITS 2016

## Proteus mirabilis



	AMP	ASU	PIP	PIT	AZT	CTX	CAZ	CFX	CTA	IMP	MER	ERT	COL	AMK	GEN	TOB	FOS	SXT	CIP	LEV	MOX	DOX	TIG
n	80	80	80	80	80	80	80	80	79	80	80	80	80	80	80	80	73	80	80	80	80	80	21
S	69	85	84	96	95	94	93	95	78	65	100	91	0	98	84	93	84	74	85	88	54		10
I			4	1	1	0	3			30	0	3		0	0	3		0	1	4			67
R	31	15	13	3	4	6	5	5	22	5	0	6	100	3	16	5	16	26	14	9	46		24



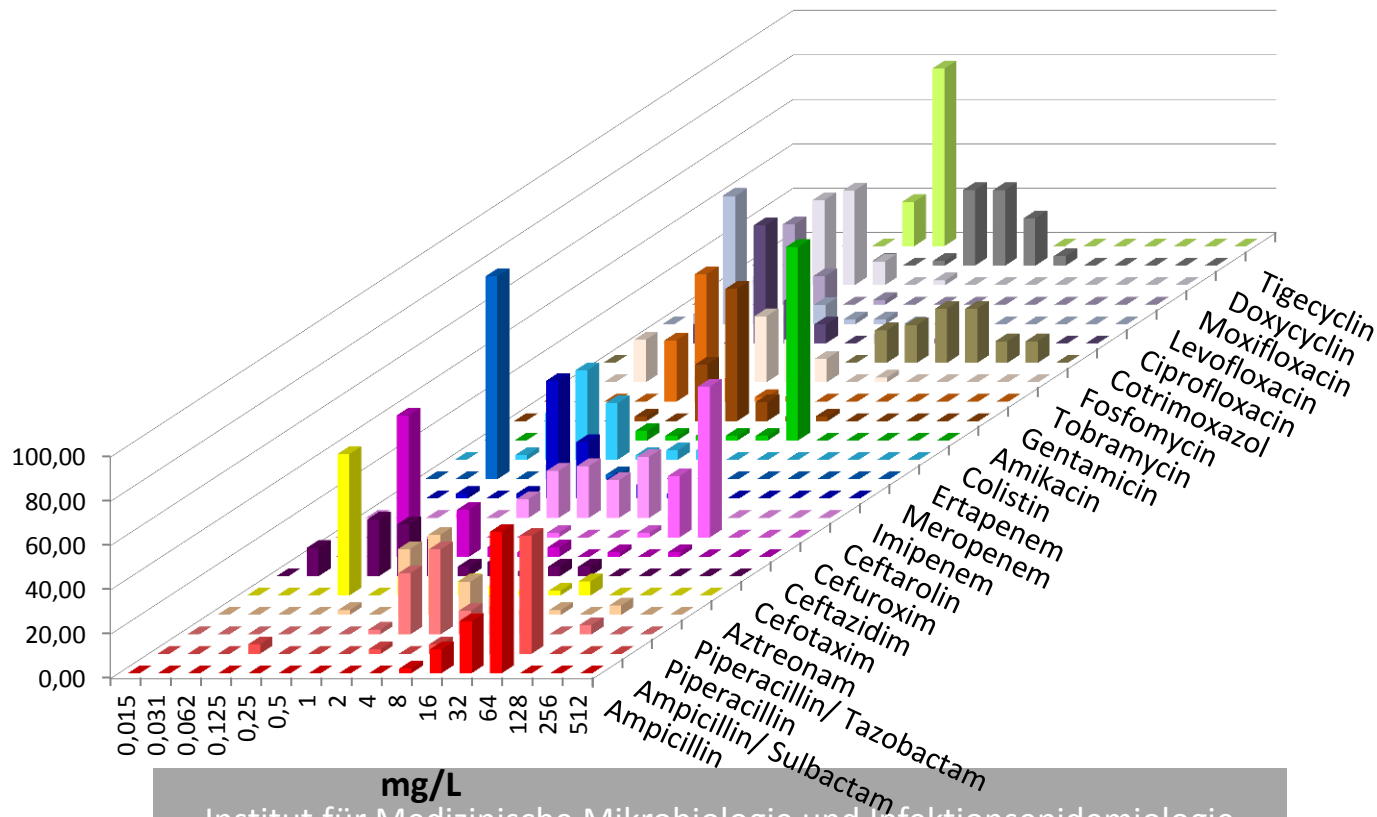


# UKL chirurgische ITS 2016

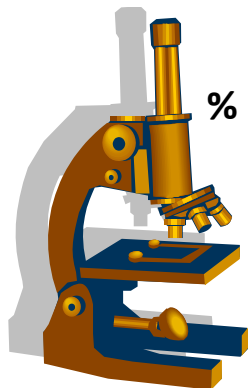
## Serratia marcescens



	AMP	ASU	PIP	PIT	AZT	CTX	CAZ	CFX	CTA	IMP	MER	ERT	COL	AMK	GEN	TOB	FOS	SXT	CIP	LEV	MOX	DOX	TIG
n	47	47	47	47	47	47	47	47	47	47	47	47	47	47	47	47	41	47	47	47	47	47	5
S	2	11	79	91	79	83	89	2	11	91	100	89	9	98	98	87	56	89	87	98	87		100
I			6	2	11	6	2			9	0	2		2	2	11		4	9	2			0
R	98	89	15	6	11	11	9	98	89	0	0	9	91	0	0	2	44	6	4	0	13		0



Institut für Medizinische Mikrobiologie und Infektionsepidemiologie





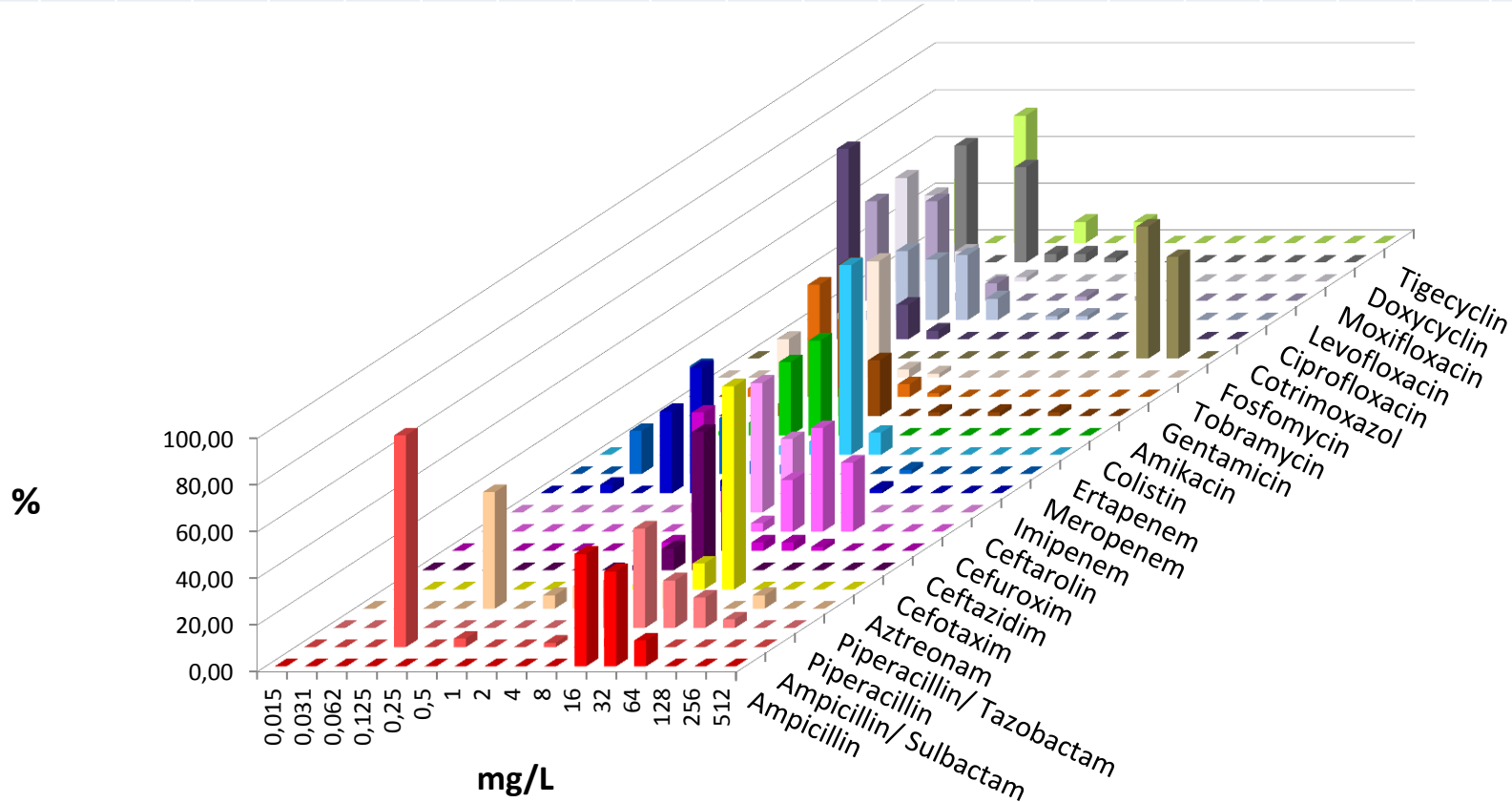


# UKL chirurgische ITS 2016

## Acinetobacter baumannii



	AMP	ASU	PIP	PIT	AZT	CTX	CAZ	CFX	CTA	IMP	MER	ERT	COL	AMK	GEN	TOB	FOS	SXT	CIP	LEV	MOX	DOX	TIG
n	54	54	54	52	54	54	54	54	54	54	54	53	54	54	54	54	46	54	54	54	54	54	11
S										98	98		100	96	100	100		100	96	96			
I										0	0		0	0						0			
R										2	2		0	4	0	0		0	4	4			

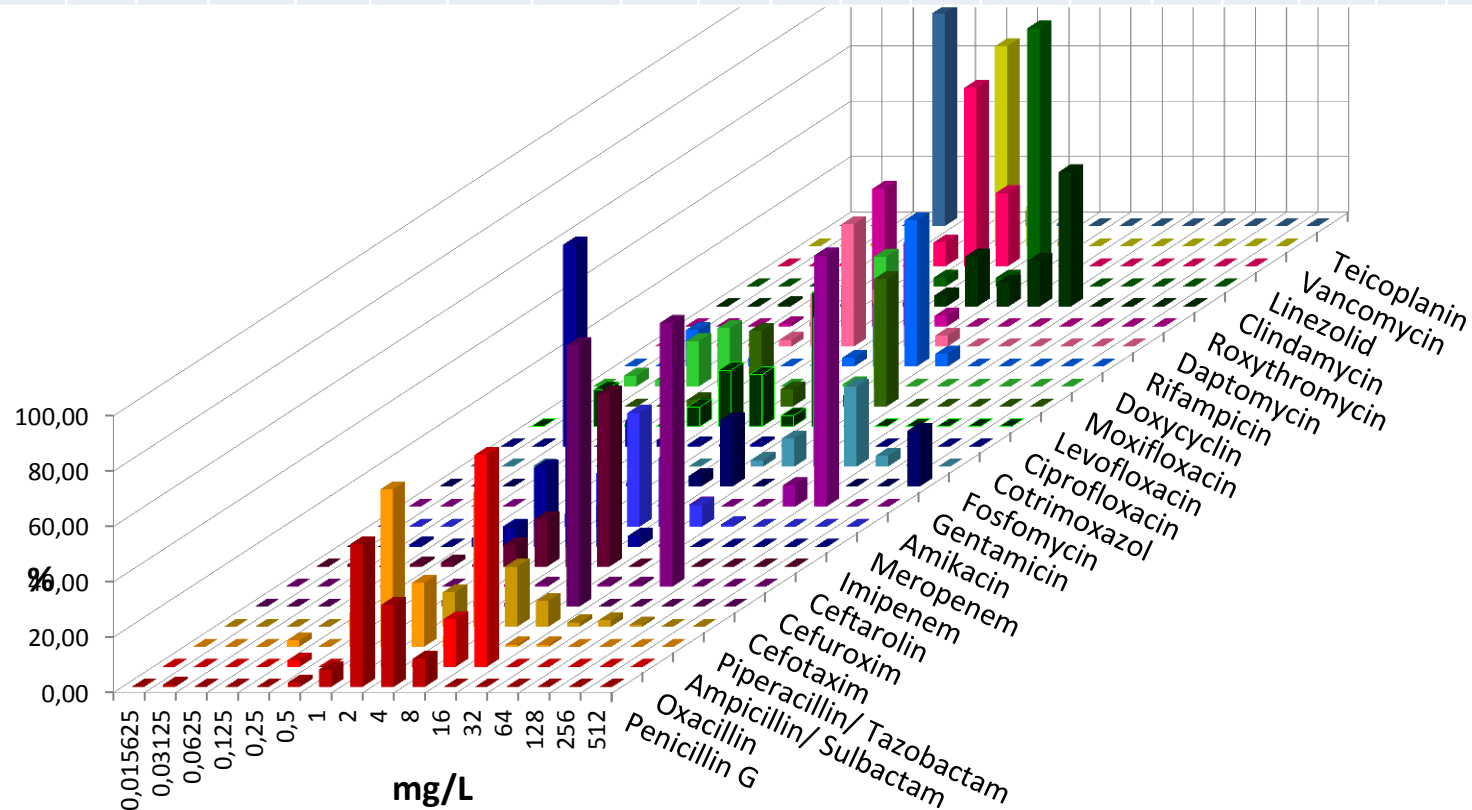


# UKL chirurgische ITS 2016

## Enterococcus faecalis



	PEN	OXA	ASU	PIT	CTX	CXM	CTA	IMP	MER	AMK	GEN	FOS	SXT	CIP	LEV	MOX	DOX	RIF	DAP	ROX	CLI	LIN	VAN	TPL
n	128	128	130	129	129	129	128	129	129	129	129	128	129	128	128	128	129	127	129	128	128	129	129	129
S			98					95					0								5	100	100	100
I			0					4					85								4			
R			2					1					15								91	0	0	0

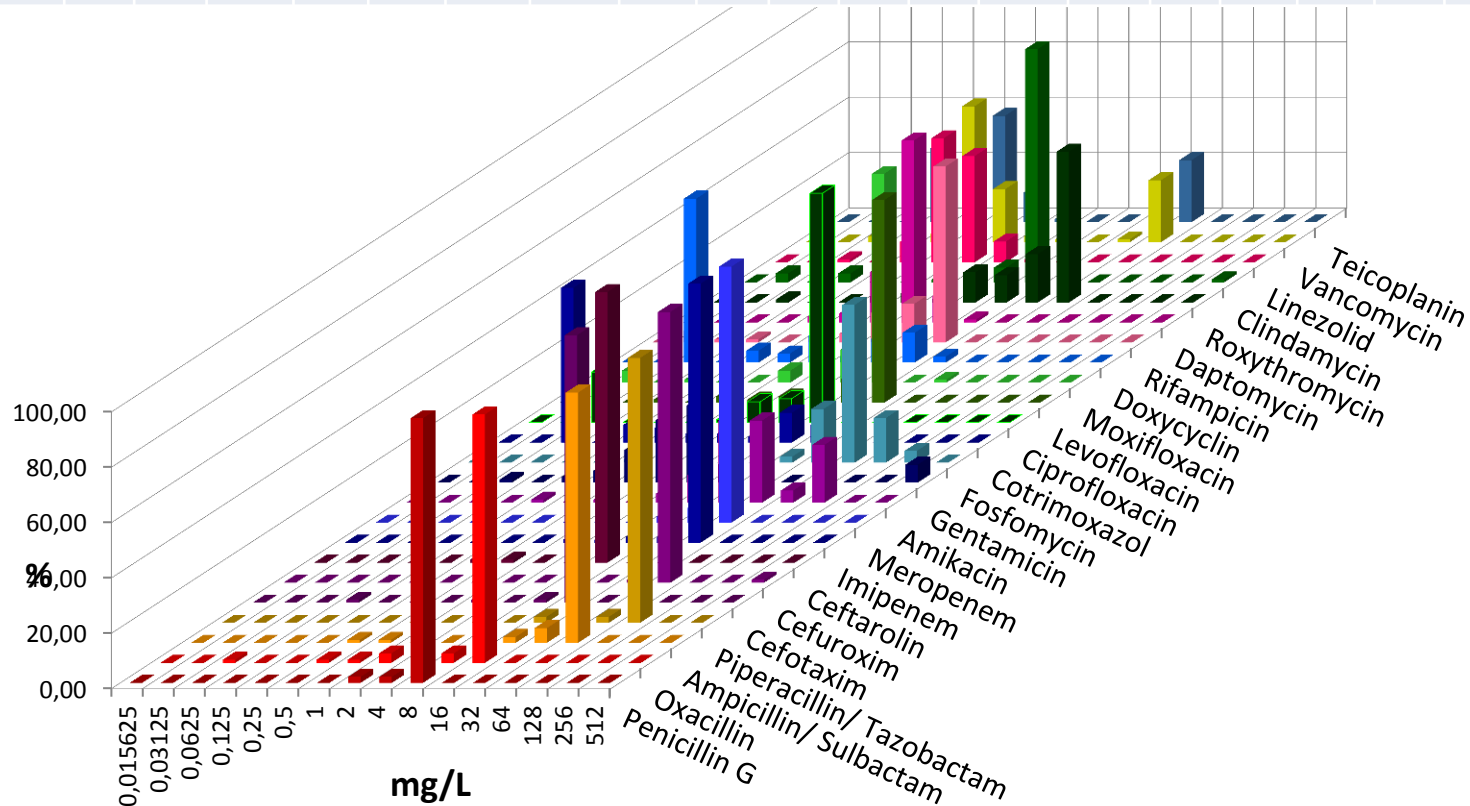


# UKL chirurgische ITS 2016

## Enterococcus faecium



	PEN	OXA	ASU	PIT	CTX	CXM	CTA	IMP	MER	AMK	GEN	FOS	SXT	CIP	LEV	MOX	DOX	RIF	DAP	ROX	CLI	LIN	VAN	TPL	
n	92	88	94	93	91	93	91	94	93	91	93	93	93	93	93	93	93	93	93	93	92	94	94	94	94
S			2					2					0							7		100	77	77	
I			0					2					71							1					
R			98					96					29							92		0	23	23	

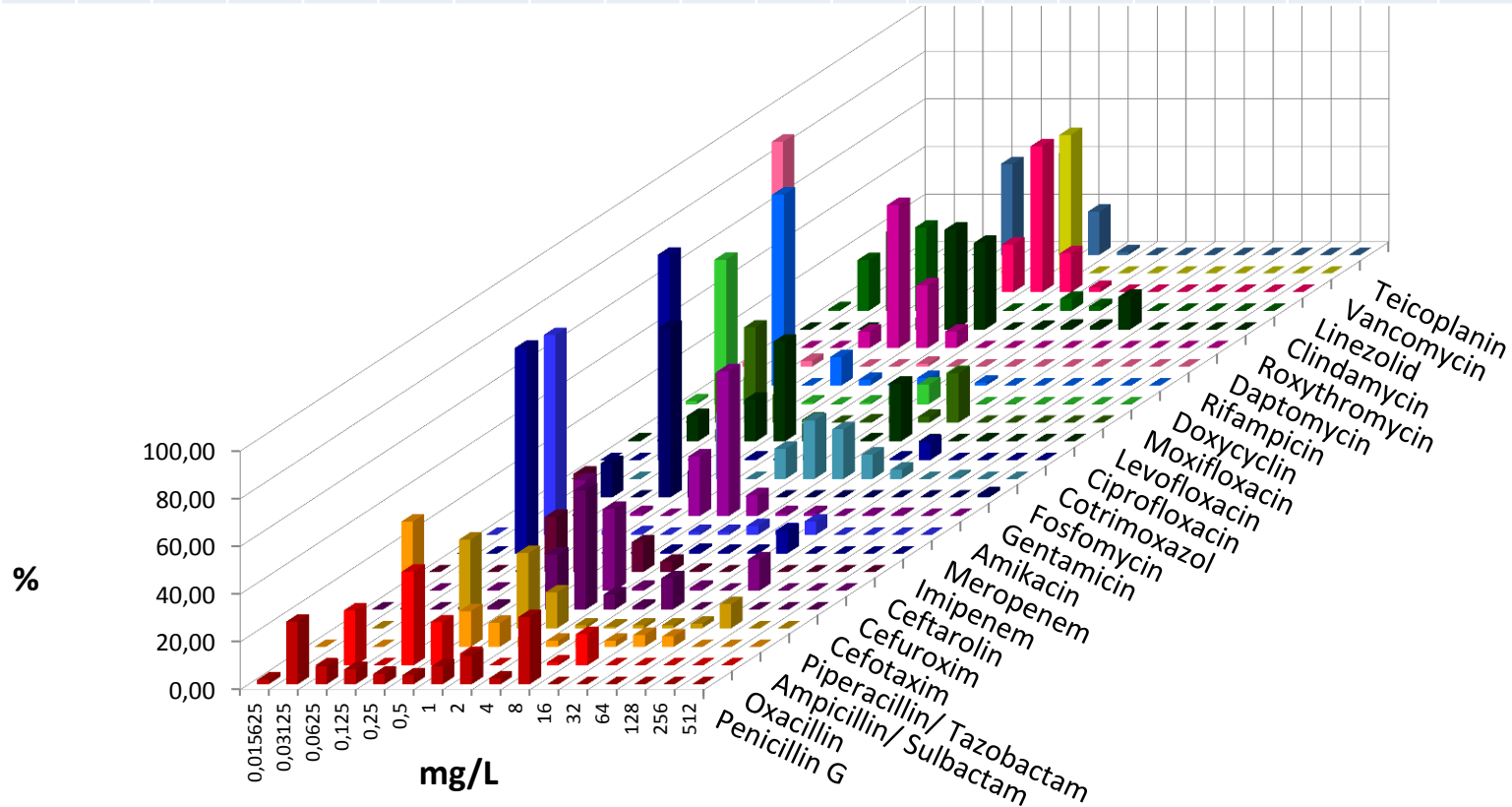


# UKL chirurgische ITS 2016

## Staphylococcus aureus



	PEN	OXA	ASU	PIT	CTX	CXM	CTA	IMP	MER	AMK	GEN	FOS	SXT	CIP	LEV	MOX	DOX	RIF	DAP	ROX	CLI	LIN	VAN	TPL
n	160	160	160	159	160	160	160	160	160	160	160	159	159	160	160	160	160	160	160	160	160	160	160	160
S	42	86					83			98	98	99	92	84	74	75	95	99	100	83	93	100	100	100
I										1			0				3	0		0	0			
R	58	14					18			1	2	1	8	26	26	25	2	1	0	17	7	0	0	0



# UKL chirurgische ITS 2016

## Staphylococcus epidermidis



Universitätsklinikum  
Leipzig

Medizin ist unsere Berufung.



ZENTRUM FÜR  
INFEKTIONSMEZIN

	PEN	OXA	ASU	PIT	CTX	CXM	CTA	IMP	MER	AMK	GEN	FOS	SXT	CIP	LEV	MOX	DOX	RIF	DAP	ROX	CLI	LIN	VAN	TPL
n	153	153	153	153	153	152	152	153	152	152	153	153	153	153	153	153	153	153	153	153	153	153	153	153
S		19					71			69	41	68	49	35	26	27	94	90	99	27	33	100	100	100
I										2			20				1	0		0	5			
R		81					29			29	59	32	31	76	74	73	5	10	1	73	62	0	0	0

