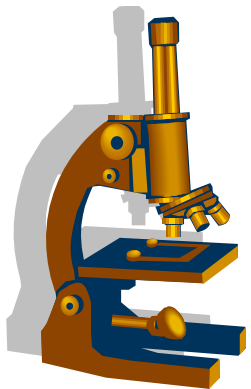




Resistenzepidemiologie 2016

Chirurgie

Arne C. Rodloff

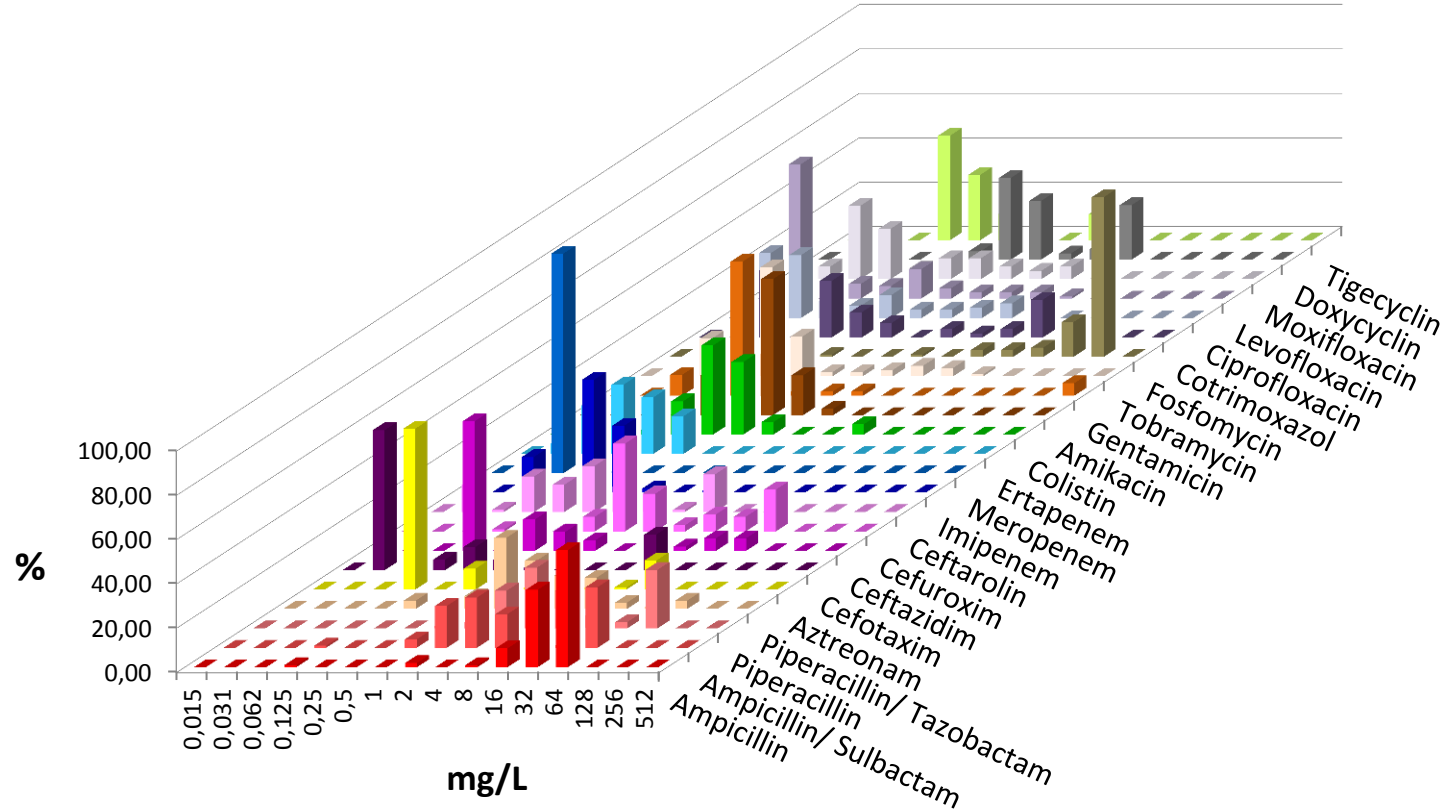


UKL Chirurgie 2016

Klebsiella pneumoniae



	AMP	ASU	PIP	PIT	AZT	CTX	CAZ	CFX	CTA	IMP	MER	ERT	COL	AMK	GEN	TOB	FOS	SXT	CIP	LEV	MOX	DOX	TIG	
n	106	106	106	106	106	106	106	106	106	106	106	106	107	106	106	106	96	106	106	106	106	106	106	17
S	4	61	48	78	83	84	81	67	62	99	100	100	95	100	92	88	8	74	71	86	66			88
I			17	14	2	0	5			1	0	0		0	2	3		4	10	5				0
R	96	39	35	8	15	16	14	33	38	0	0	0	5	0	6	9	92	23	19	9	34			12

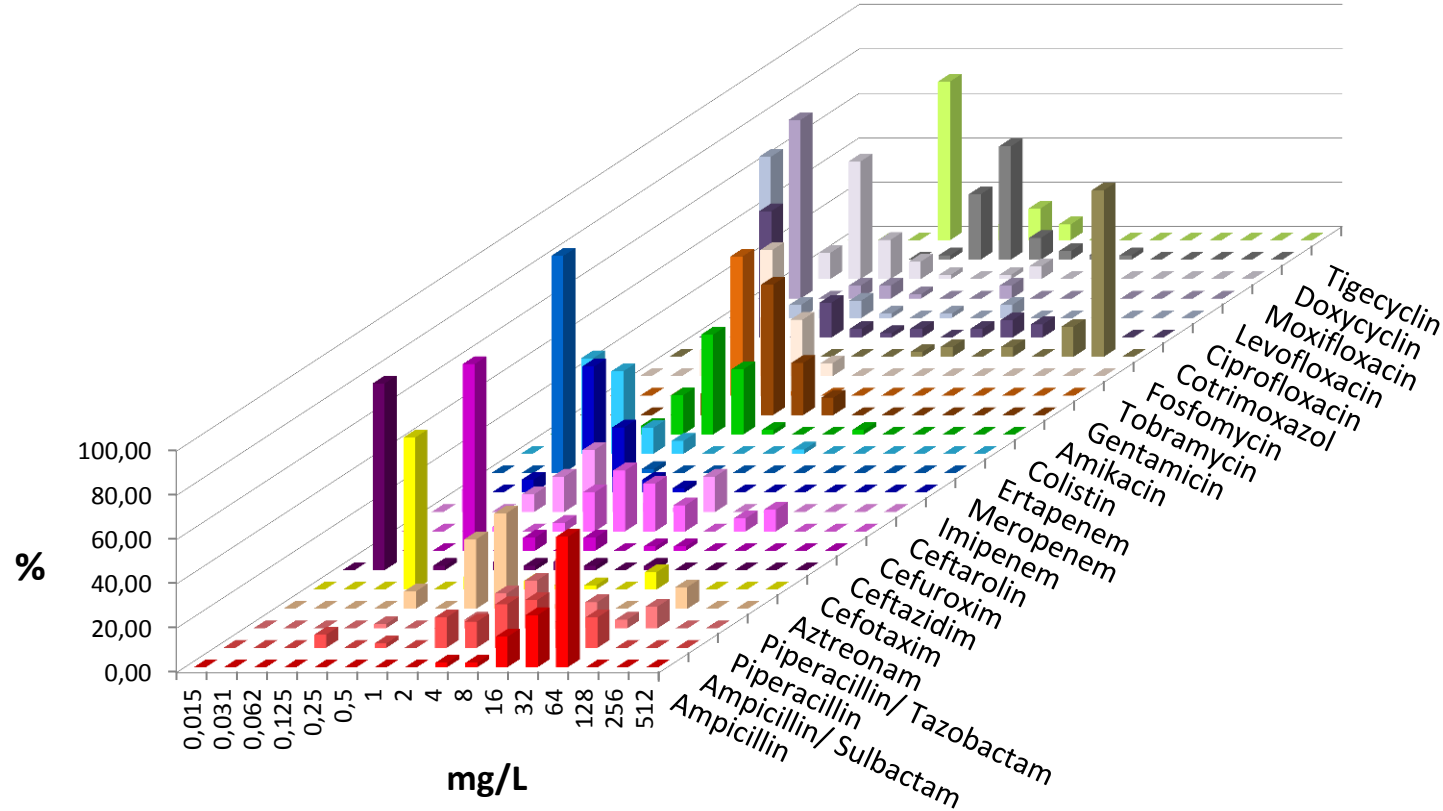


UKL Chirurgie 2016

Klebsiella oxytoca



	AMP	ASU	PIP	PIT	AZT	CTX	CAZ	CFX	CTA	IMP	MER	ERT	COL	AMK	GEN	TOB	FOS	SXT	CIP	LEV	MOX	DOX	TIG
n	51	51	51	51	51	51	51	51	50	51	51	51	51	51	51	51	44	51	51	51	51	51	14
S	4	53	43	90	84	92	90	84	62	100	100	98	98	100	100	100	11	82	90	94	90		93
I			31	0	6	4	6			0	0	0		0	0	0		0	2	0			7
R	96	47	25	10	10	4	4	16	38	0	0	2	2	0	0	0	89	18	8	6	10		0



UKL Chirurgie 2016

Enterobacter cloacae



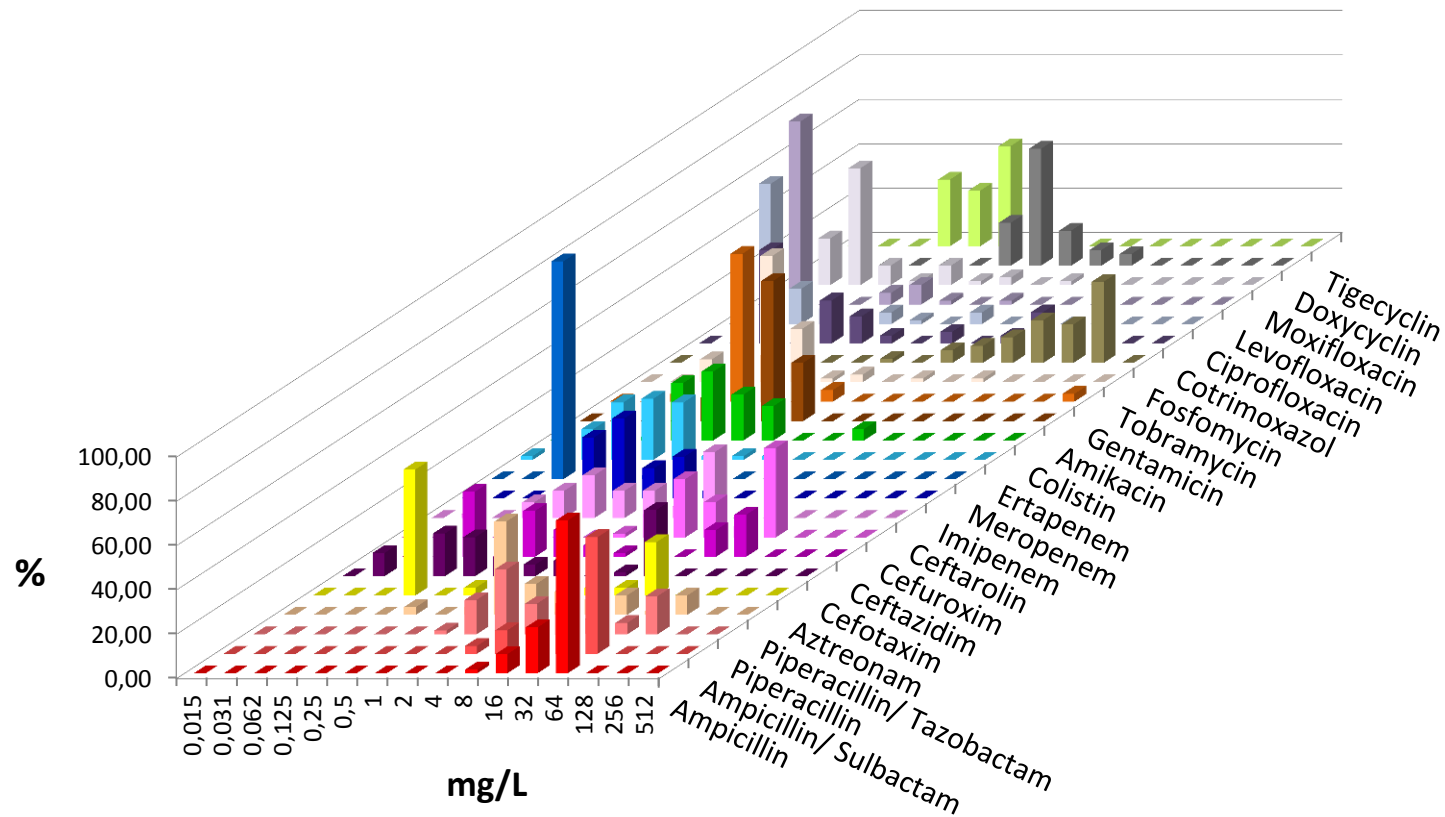
Universitätsklinikum
Leipzig

Medizin ist unsere Berufung.



ZENTRUM FÜR
INFEKTIONSMEZIN

	AMP	ASU	PIP	PIT	AZT	CTX	CAZ	CFX	CTA	IMP	MER	ERT	COL	AMK	GEN	TOB	FOS	SXT	CIP	LEV	MOX	DOX	TIG
n	58	57	58	57	58	57	58	57	57	58	57	58	58	57	57	58	52	57	57	57	57	57	20
S	2	14	60	74	69	61	62	39	40	97	100	95	95	100	96	97	27	77	88	96	84		100
I			10	7	0	7	5			3	0	2		0	0	0		5	5	2			0
R	98	86	29	19	31	32	33	61	60	0	0	3	5	0	4	3	73	18	7	2	16		0



UKL gesamt 2016

Proteus mirabilis



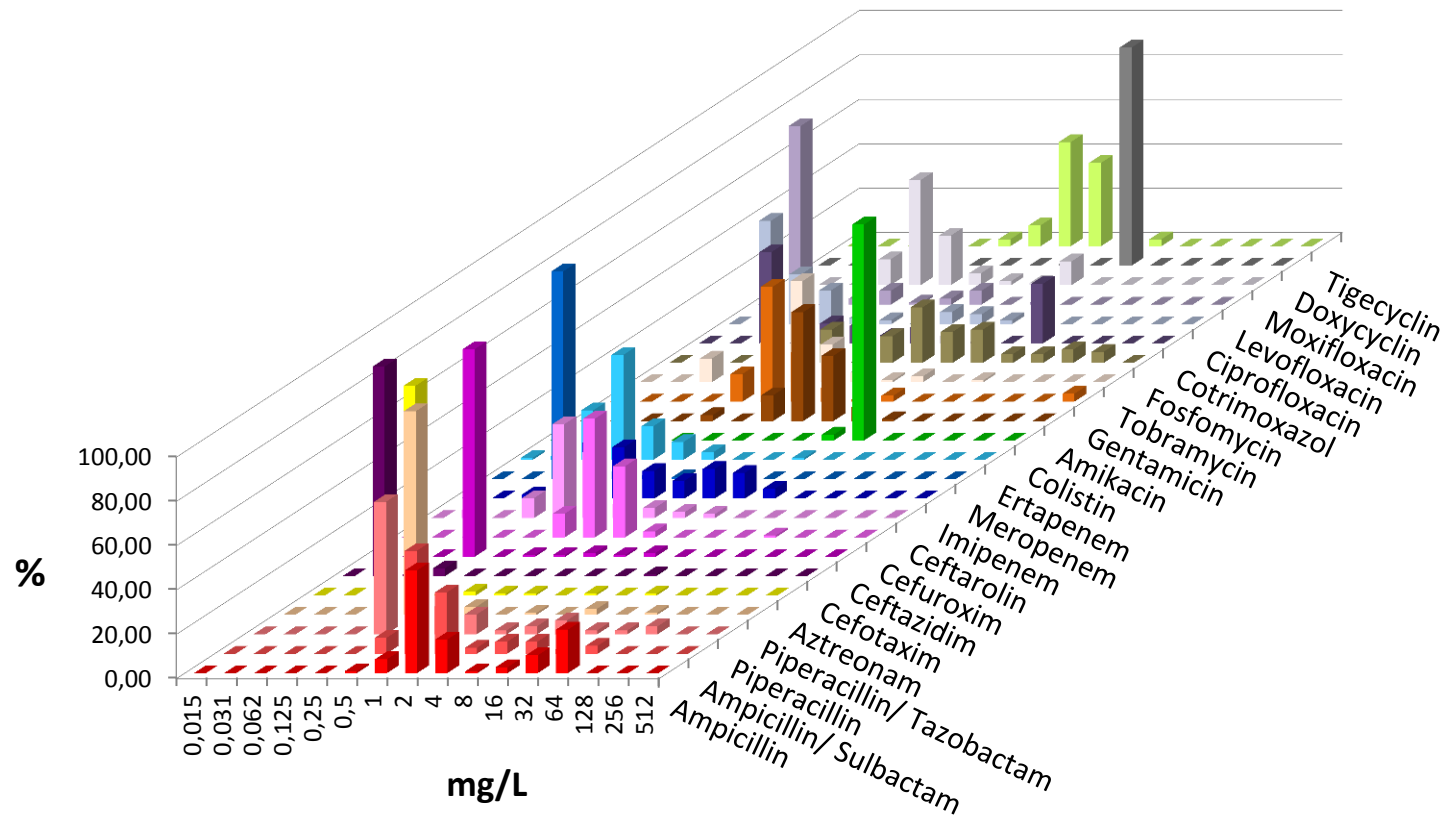
Universitätsklinikum
Leipzig

Medizin ist unsere Berufung.



ZENTRUM FÜR
INFEKTIONSMEDIZIN

	AMP	ASU	PIP	PIT	AZT	CTX	CAZ	CFX	CTA	IMP	MER	ERT	COL	AMK	GEN	TOB	FOS	SXT	CIP	LEV	MOX	DOX	TIG
n	112	112	112	112	112	112	112	112	111	112	112	112	112	112	112	112	100	112	112	112	112	110	32
S	70	89	87	96	97	99	96	99	85	71	100	96	0	99	93	96	85	69	87	90	59		13
I			6	3	1	0	2			25	0	4		1	1	1		4	2	3			47
R	30	11	7	1	2	1	3	1	15	4	0	1	100	0	6	4	15	28	12	7	41		41

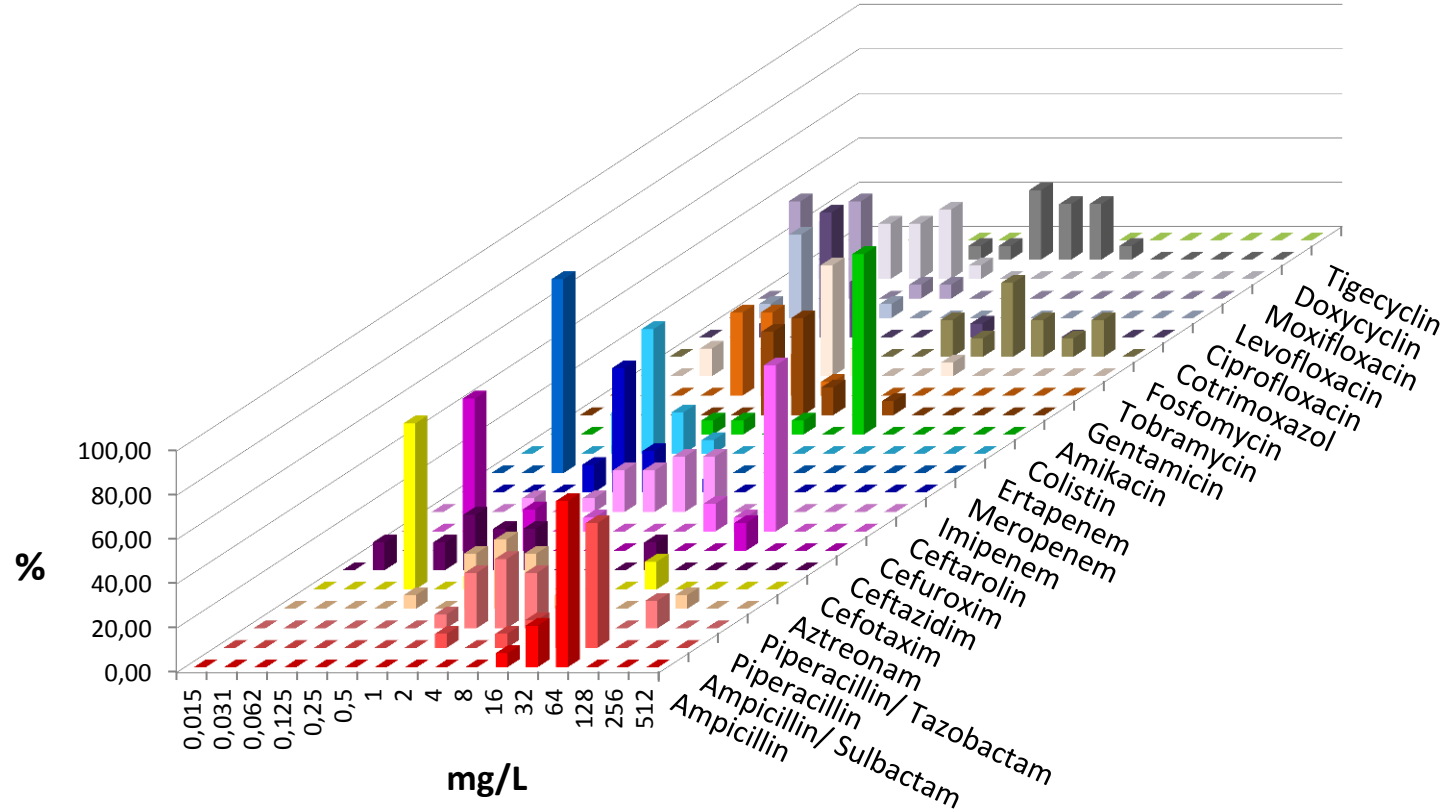


UKL Chirurgie 2016

Serratia marcescens



	AMP	ASU	PIP	PIT	AZT	CTX	CAZ	CFX	CTA	IMP	MER	ERT	COL	AMK	GEN	TOB	FOS	SXT	CIP	LEV	MOX	DOX
n	16	16	16	16	16	16	16	16	16	16	16	16	16	16	16	16	12	16	16	16	16	16
S	0	13	88	94	88	88	88	6	13	94	100	94	13	94	100	94	58	88	94	94	63	
I			0	0	0	0	0			6	0	6		6	0	0		0	6	6		
R	100	88	13	6	13	13	13	94	88	0	0	0	88	0	0	6	42	13	0	0	38	

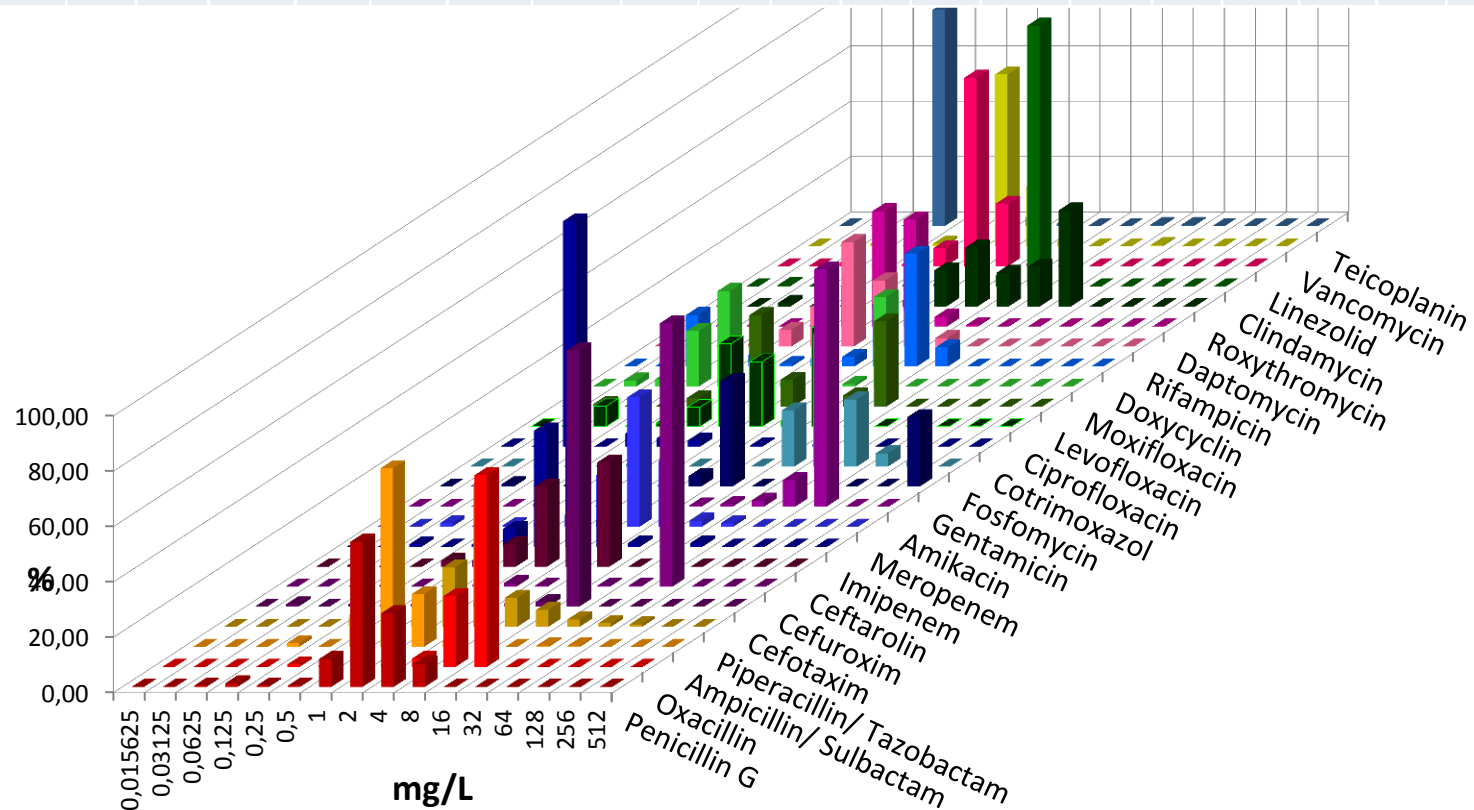


UKL Chirurgie 2016

Enterococcus faecalis



	PEN	OXA	ASU	PIT	CTX	CXM	CTA	IMP	MER	AMK	GEN	FOS	SXT	CIP	LEV	MOX	DOX	RIF	DAP	ROX	CLI	LIN	VAN	TPL	
n	229	231	231	229	231	231	231	231	231	230	231	231	231	231	227	229	231	231	231	231	231	231	231	231	
S			99					97					0								5		100	100	99
I			0					1					91								13				
R			1					1					9								82		0	0	1

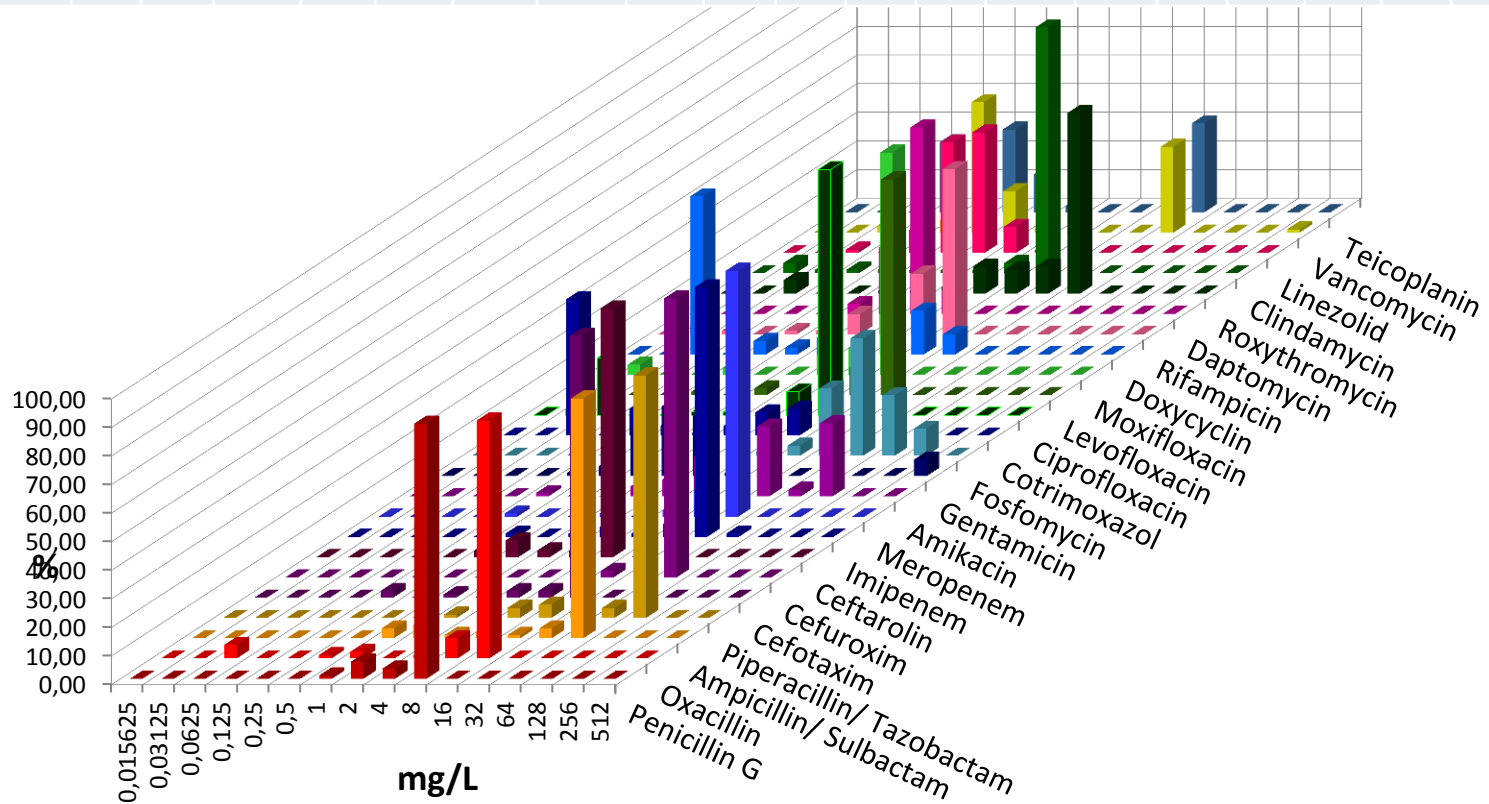


UKL Chirurgie 2016

Enterococcus faecium



	PEN	OXA	ASU	PIT	CTX	CXM	CTA	IMP	MER	AMK	GEN	FOS	SXT	CIP	LEV	MOX	DOX	RIF	DAP	ROX	CLI	LIN	VAN	TPL	
n	84	84	87	86	85	86	85	87	86	86	86	85	86	85	85	85	85	85	86	84	85	88	90	90	
S			9					6					0							7		100	69	69	
I			2					1					62							2					
R			89					93					38							90		0	31	31	

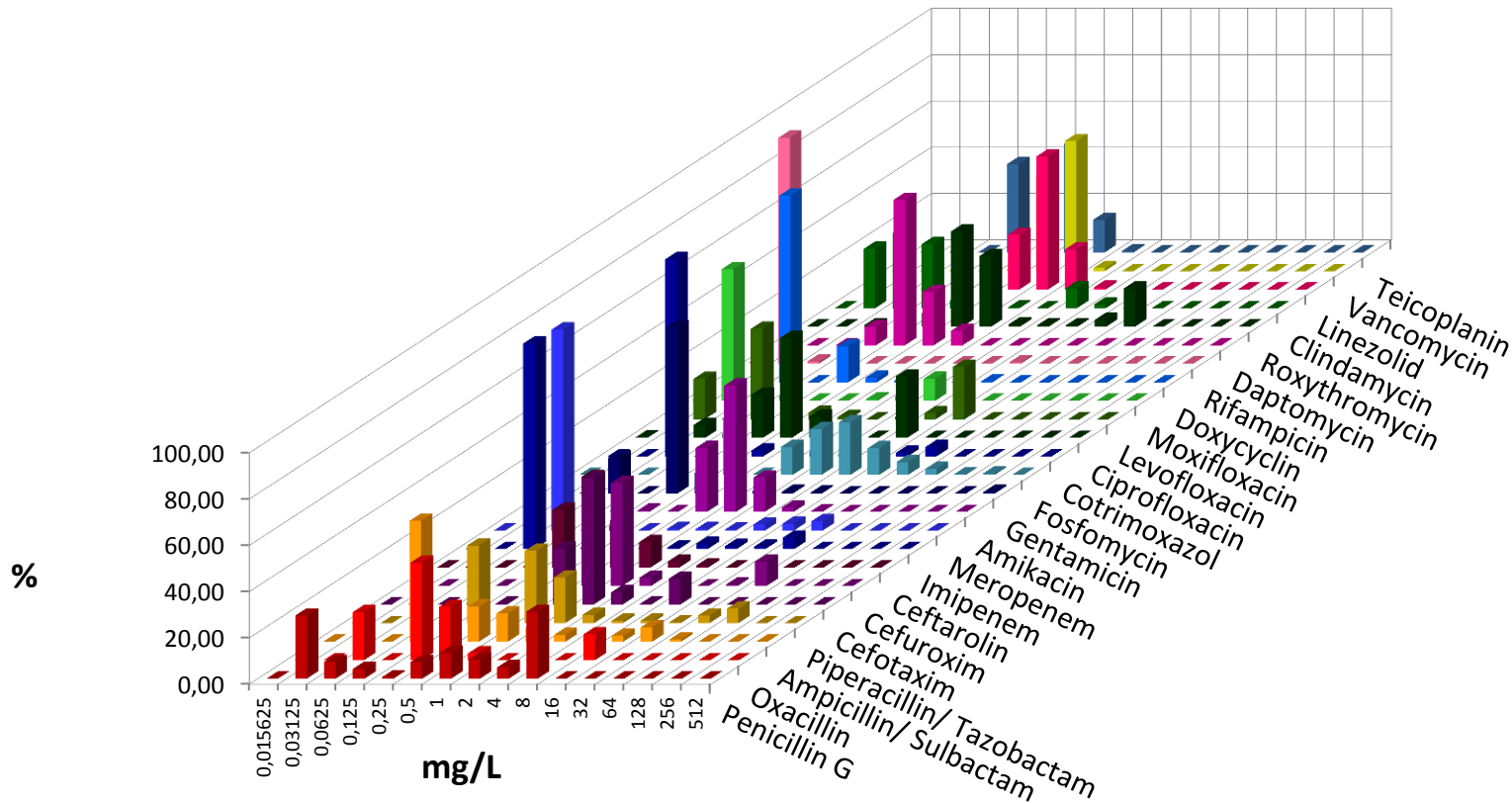


UKL Chirurgie 2016

Staphylococcus aureus



	PEN	OXA	ASU	PIT	CTX	CXM	CTA	IMP	MER	AMK	GEN	FOS	SXT	CIP	LEV	MOX	DOX	RIF	DAP	ROX	CLI	LIN	VAN	TPL
n	304	304	304	304	304	303	301	304	304	304	304	304	304	305	304	304	304	304	304	304	304	304	304	304
S	39	89					85			100	97	96	92	79	74	74	99	99	100	78	89	100	100	100
I										0			1				1	0		1	0			
R	61	11					15			0	3	4	7	27	26	26	1	1	0	21	11	0	0	0



UKL Chirurgie 2016

Staphylococcus epidermidis



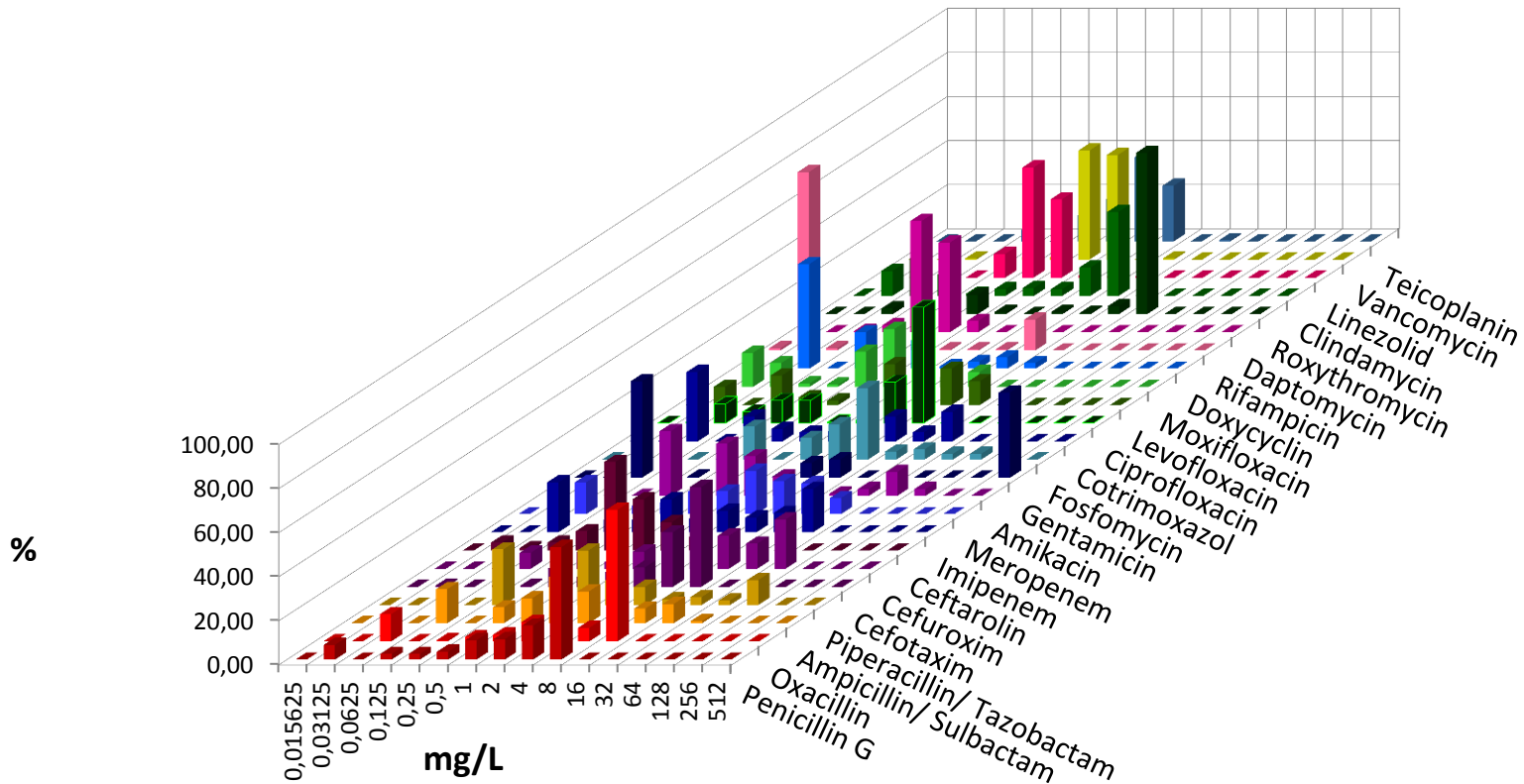
**Universitätsklinikum
Leipzig**

Medizin ist unsere Berufung.



ZENTRUM FÜR
INFEKTIONSMEZIN

	PEN	OXA	ASU	PIT	CTX	CXM	CTA	IMP	MER	AMK	GEN	FOS	SXT	CIP	LEV	MOX	DOX	RIF	DAP	ROX	CLI	LIN	VAN	TPL
n	194	194	194	194	194	193	194	194	193	194	194	194	194	194	194	194	194	194	194	194	194	194	194	194
S		13					80			82	45	81	57	36	27	29	88	83	100	22	39	99	99	99
I										1			14				1	2		0	3			
R		87					20			17	54	19	29	73	73	71	11	15	0	78	58	1	1	1

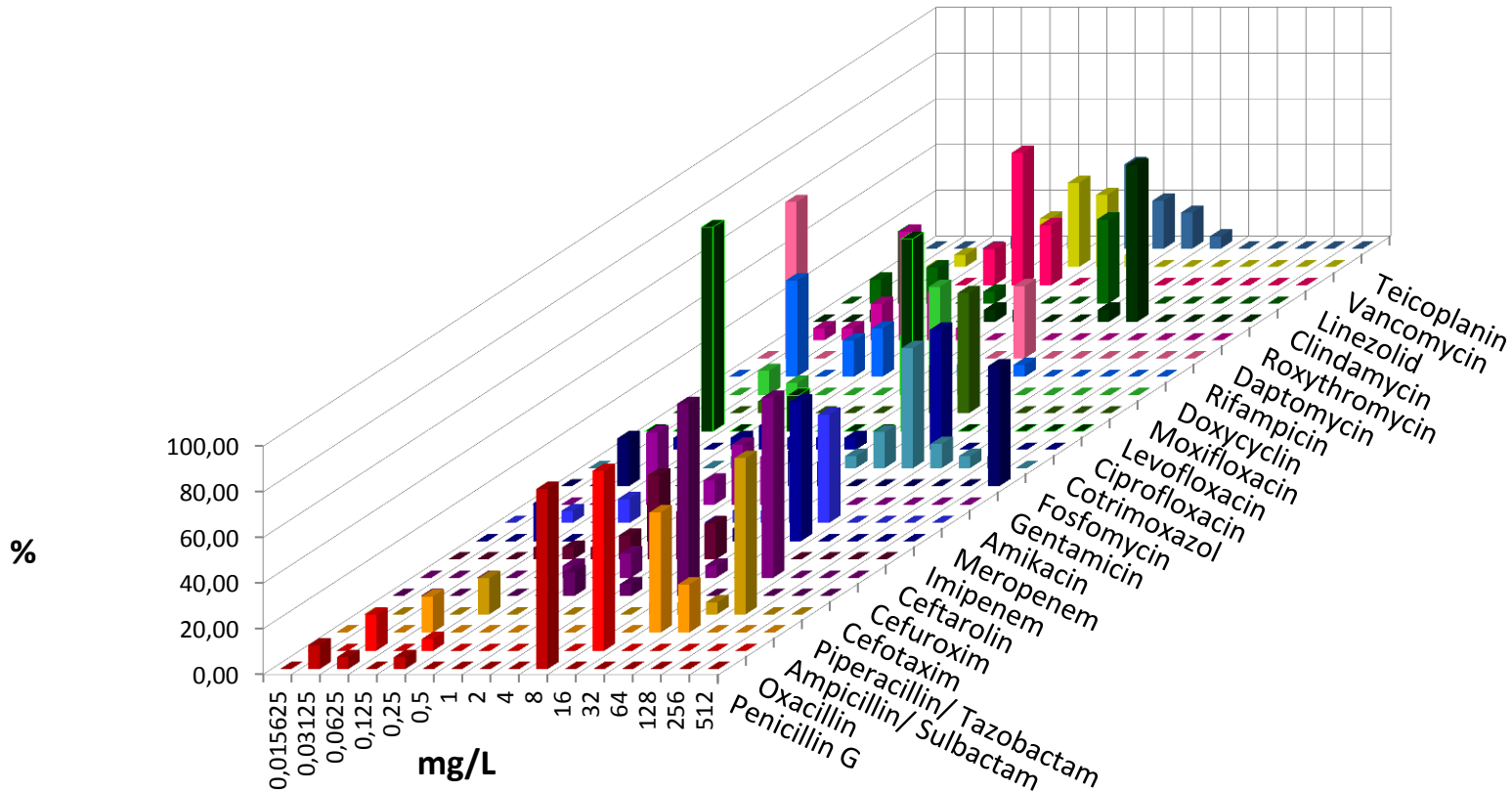


UKL Chirurgie 2016

Staphylococcus haemolyticus



	PEN	OXA	ASU	PIT	CTX	CXM	CTA	IMP	MER	AMK	GEN	FOS	SXT	CIP	LEV	MOX	DOX	RIF	DAP	ROX	CLI	LIN	VAN	TPL
n	19	19	19	19	19	19	19	18	19	19	19	19	19	19	19	19	19	19	19	19	19	19	19	19
S		21					26			100	21	79	32	105	21	16	89	68	100	21	58	100	100	79
I										0		5					0	0		5	5			
R		79					74			0	79	21	63	84	79	84	11	32	0	74	37	0	0	21



UKL Chirurgie 2016

Bacteroides fragilis



	PEN	AMP	PIT	IMP	CLI	MTR
n	41	41	41	41	41	41
S	0	0	98	100	78	98
I	0	2	0	0		
R	100	98	2	0	22	2

