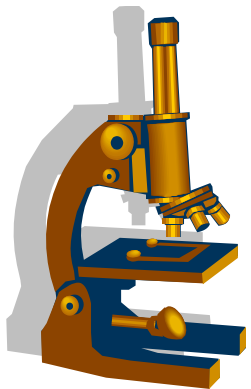




Resistenzepidemiologie 2015

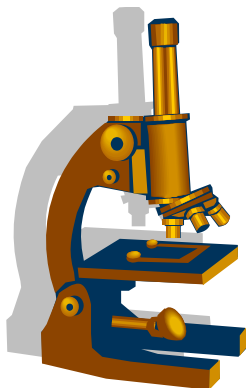
Arne C. Rodloff



Erreger Urologie



Escherichia coli	348	Staphylococcus aureus ***MRSA***	5
Enterococcus faecalis	109	Candida glabrata	4
Proteus mirabilis	69	Clostridium difficile	4
Klebsiella pneumoniae	53	Enterobacter cloacae (ESBL)	4
Escherichia coli (ESBL)	38	Streptococcus pyogenes	4
Pseudomonas aeruginosa	34	Bacteroides fragilis	3
Staphylococcus aureus	33	Citrobacter braakii	3
Streptococcus agalactiae	33	Raoultella ornithinolytica	3
Staphylococcus epidermidis	21	Staphylococcus capitis	3
Klebsiella oxytoca	20	Staphylococcus hominis	3
Serratia marcescens	20	Staphylococcus lugdunensis	3
Enterobacter cloacae	17	Streptococcus intermedius	3
Candida albicans	13	Enterococcus faecium (VRE2)	2
Enterobacter aerogenes	13	koagulase-negative Staphylokokken	2
Morganella morganii	13	Neisseria gonorrhoeae	2
Citrobacter koseri	12	Peptoniphilus asaccharolyticus	2
Proteus vulgaris	12	Peptostreptococcus anaerobius	2
Acinetobacter baumannii	7	Prevotella bivia	2
Staphylococcus saprophyticus	7	Prevotella disiens	2
Stenotrophomonas maltophilia	7	Raoultella planticola	2
Streptococcus dysgalactiae ssp. equisimilis	7	Staphylococcus haemolyticus	2
Citrobacter freundii	6	Actinomyces meyeri	1
Pseudomonas aeruginosa (MBL)	6	Aerococcus urinae	1
Enterococcus faecium	5	Alcaligenes faecalis	1
Haemophilus parainfluenzae	5	Anaerococcus prevotii	1
Klebsiella pneumoniae (ESBL)	5		

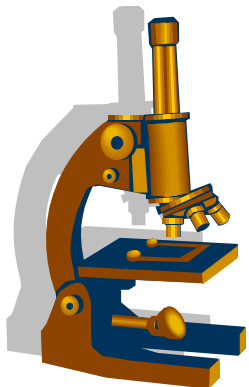
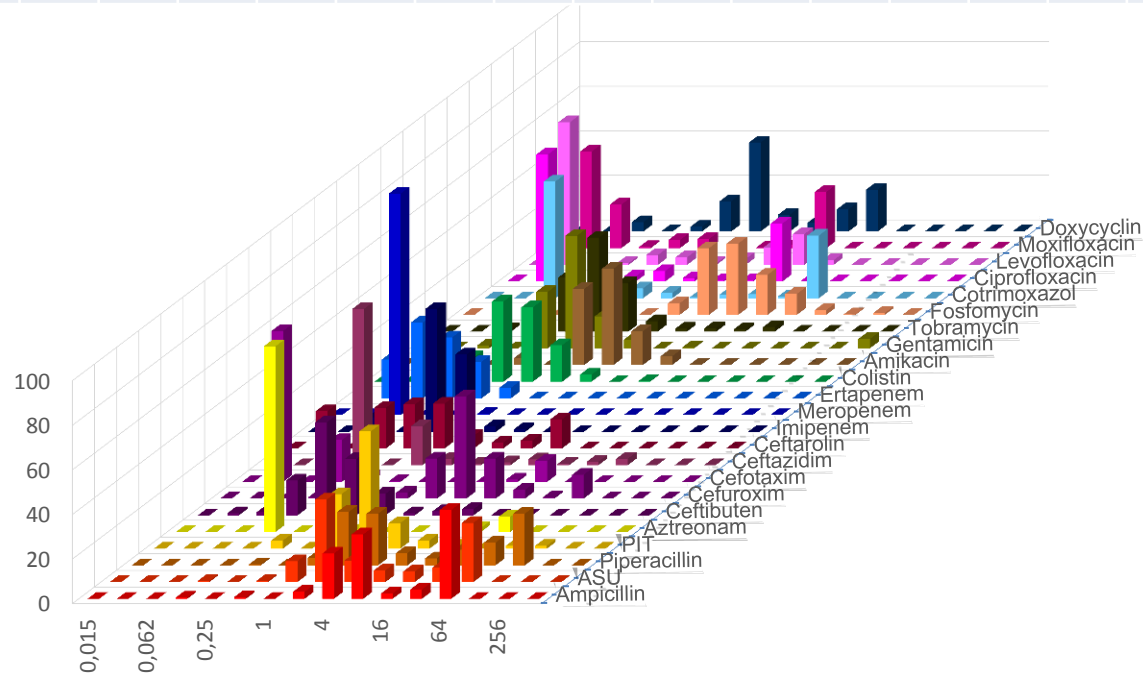


UKL Urologie 2015

Escherichia coli



	AMP	ASU	PIP	PIT	AZT	CFB	CXM	CTX	CAZ	CTA	IMP	MER	ERT	COL	AMK	GEN	TOB	FOS	SXT	CIP	LEV	MOX	DOX
n	384	384	384	384	384	218	384	384	384	383	384	384	384	384	384	384	384	384	384	384	384	384	383
S	54	62	57	96	90	94	85	89	90	81	100	100	100	100	99	95	94	88	68	71	74	72	
I			3	1	0			0	2		0	0	0		0	0	1		2	2	3	1	
R	46	38	40	3	10	6	15	11	8	19	0	0	0	0	0	5	5	13	31	27	24	27	

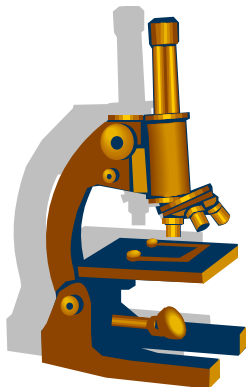
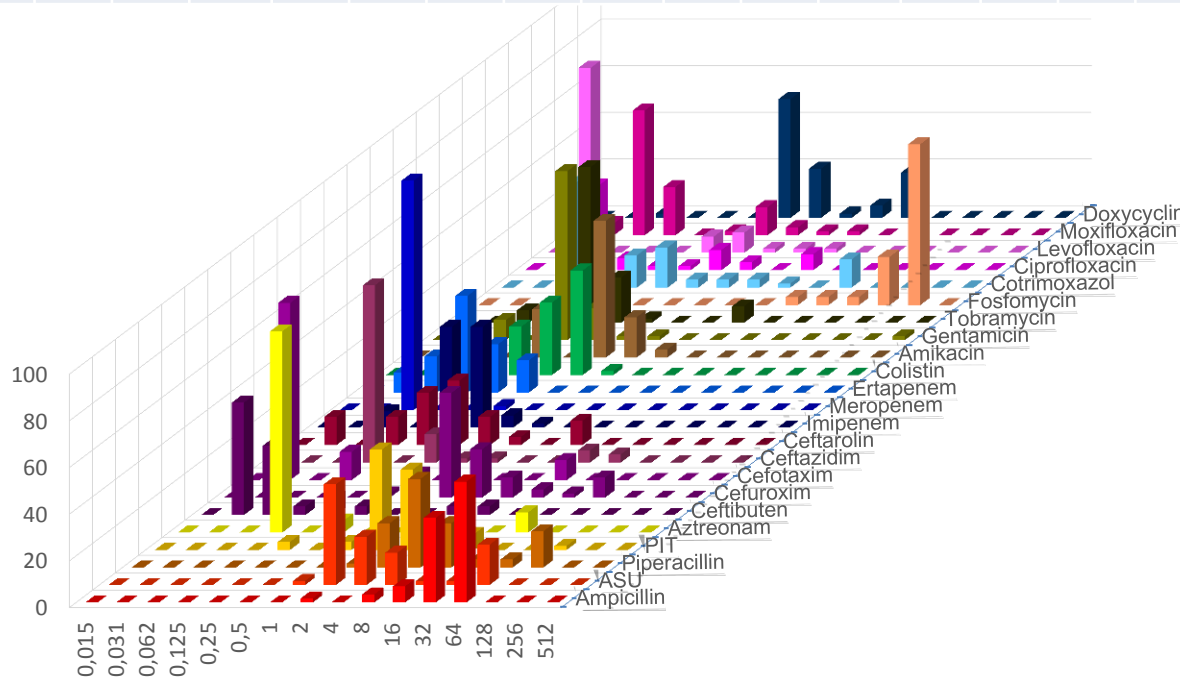


UKL Urologie 2015

Klebsiella pneumoniae



	AMP	ASU	PIP	PIT	AZT	CFB	CXM	CTX	CAZ	CTA	IMP	MER	ERT	COL	AMK	GEN	TOB	FOS	SXT	CIP	LEV	MOX	DOX
n	58	58	58	58	58	27	58	58	58	58	58	58	58	58	58	58	57	58	58	58	58	58	57
S	5	79	59	91	91	93	86	91	90	86	100	100	100	100	100	98	93	3	83	81	95	81	
I			19	7	0			0	2		0	0	0		0	0	0		3	9	2	12	
R	95	21	22	2	9	7	14	9	9	14	0	0	0	0	0	2	7	97	14	10	3	7	

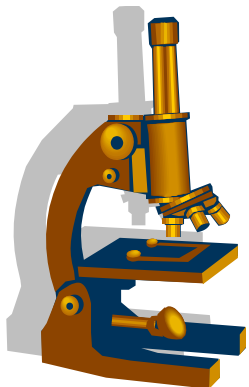
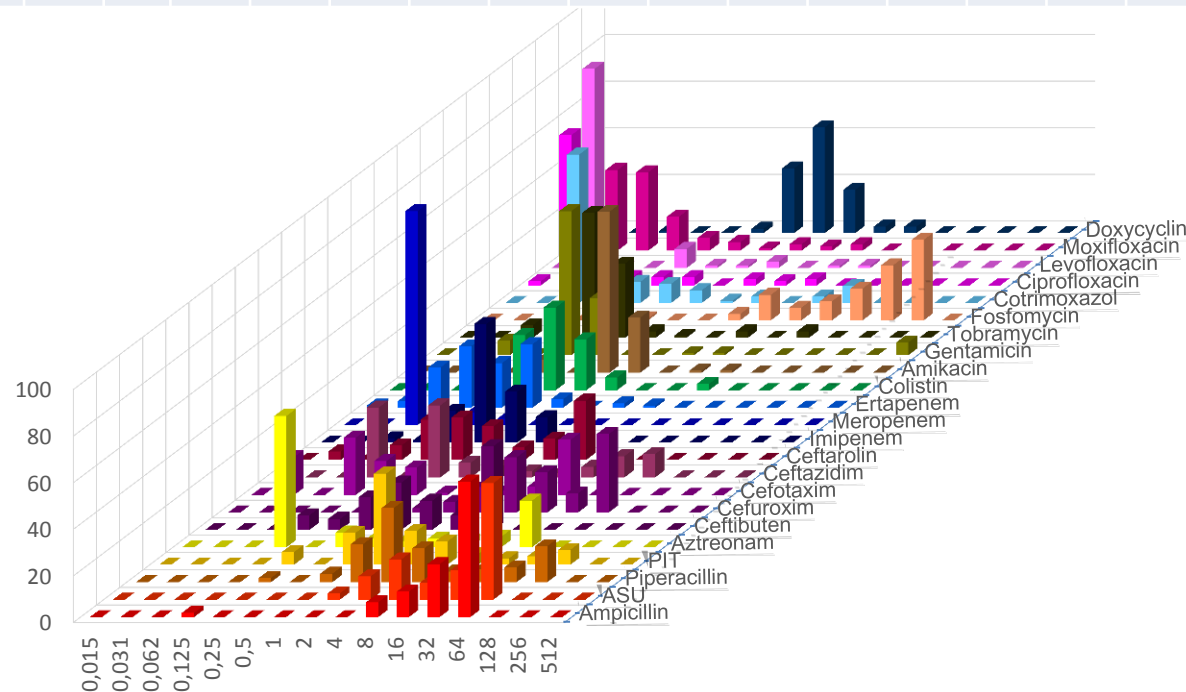


UKL Urologie 2015

Enterobacter cloacae



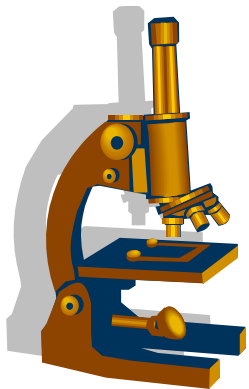
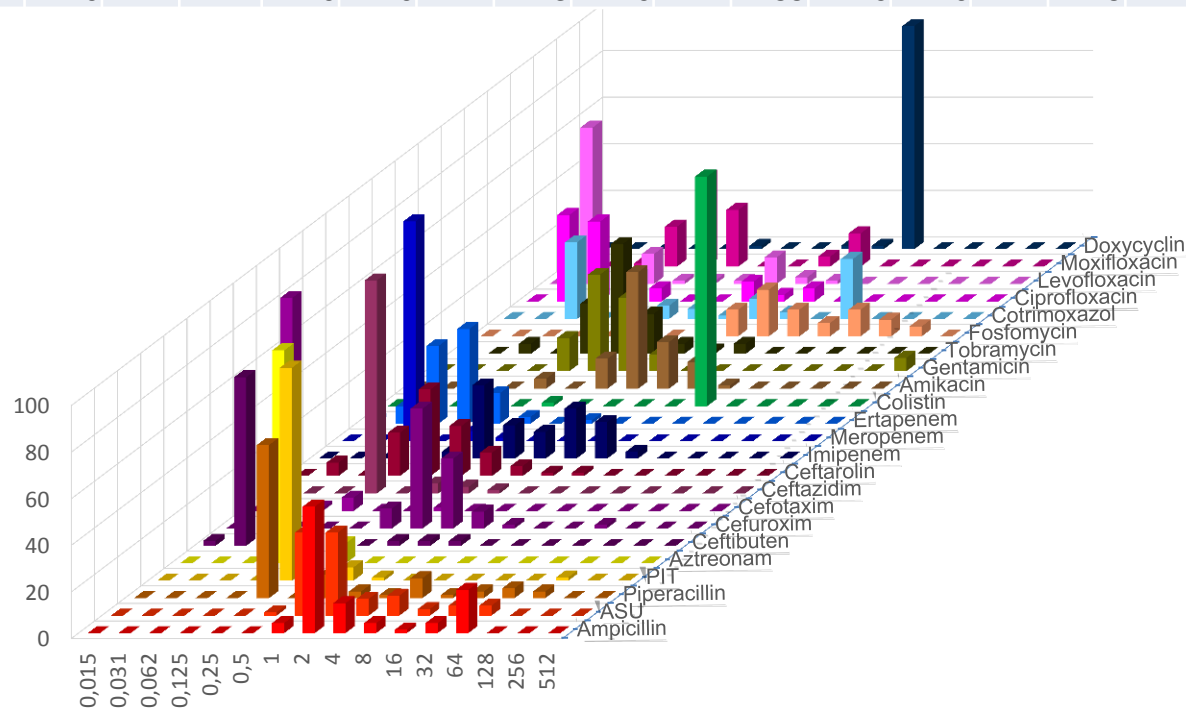
	AMP	ASU	PIP	PIT	AZT	CFB	CXM	CTX	CAZ	CTA	IMP	MER	ERT	COL	AMK	GEN	TOB	FOS	SXT	CIP	LEV	MOX	DOX
n	110	110	110	110	110	64	110	110	110	110	110	110	110	110	110	110	110	110	110	110	110	110	108
S	8	30	68	83	66	45	41	68	67	60	100	100	94	97	99	93	95	20	87	93	95	92	
I			5	5	6			3	7		0	0	4		1	1	0		3	0	3	1	
R	92	70	27	13	27	55	56	29	25	40	0	0	3	3	0	6	5	80	10	7	2	7	



UKL Urologie 2015

Proteus mirabilis

	AMP	ASU	PIP	PIT	AZT	CFB	CXM	CTX	CAZ	CTA	IMP	MER	ERT	COL	AMK	GEN	TOB	FOS	SXT	CIP	LEV	MOX	DOX
n	70	70	70	70	70	47	70	70	70	70	70	70	69	70	70	70	70	70	70	70	70	70	70
S	76	89	89	99	100	96	99	100	99	93	60	100	99	1	99	94	94	71	63	83	84	81	
I			1	0	0			0	1		37	0	0		1	0	1		9	0	11	0	
R	24	11	10	1	0	4	1	0	0	7	3	0	1	99	0	6	4	29	29	17	4	19	



UKL Urologie 2015

Enterococcus faecalis



	ASU	PIT	IMP	SXT	CIP	LEV	DAP	LIN	VAN	TPL
n	105		106	104	106	105		106	106	106
S	99		99	0	73	73	?	100	100	100
I	0		0	91				?		
R	1		1	9	27	27	?	0	0	0

