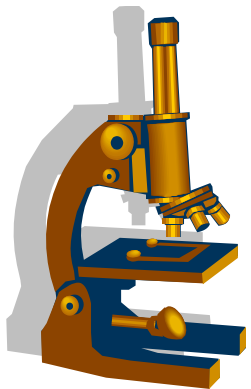




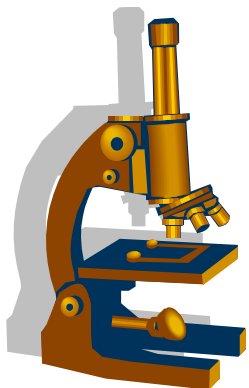
Resistenzepidemiologie 2015

Arne C. Rodloff





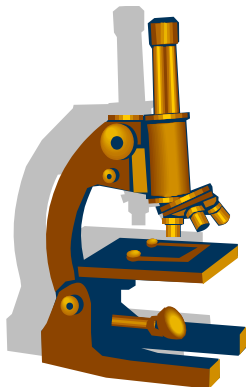
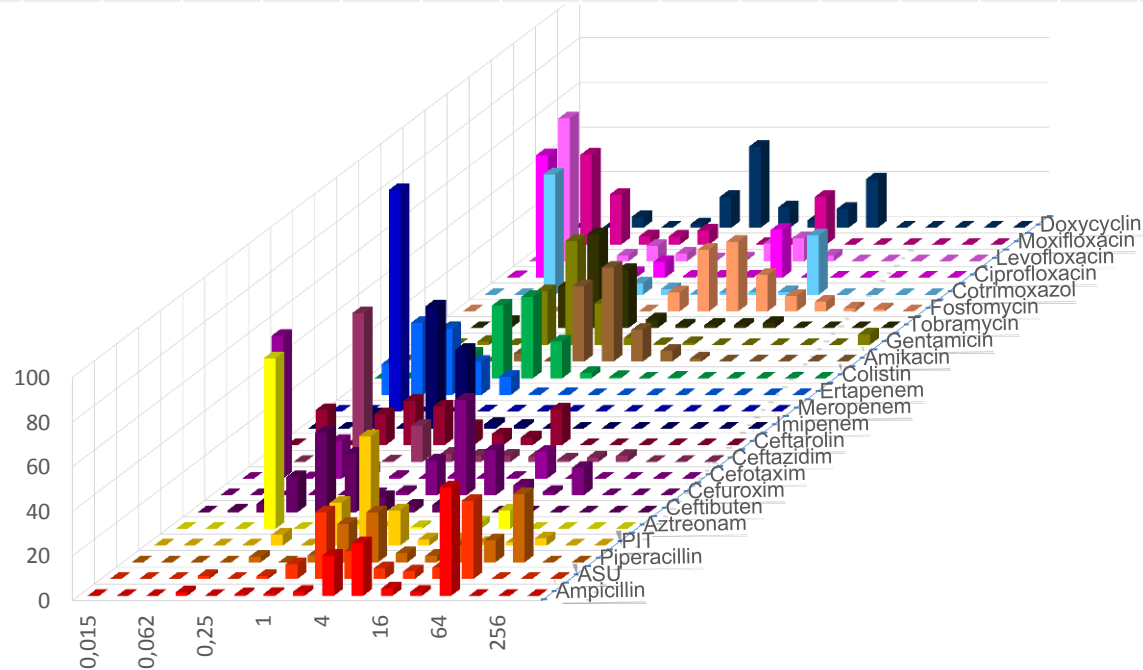
Escherichia coli	461	Citrobacter koseri	20
Staphylococcus aureus	247	Haemophilus influenzae	19
Klebsiella pneumoniae	169	Staphylococcus haemolyticus	17
Staphylococcus epidermidis	138	Staphylococcus capitis	16
Pseudomonas aeruginosa	131	Aspergillus fumigatus	15
Proteus mirabilis	130	Klebsiella pneumoniae (ESBL)	14
Enterococcus faecalis	129	Acinetobacter baumannii	12
Enterobacter cloacae	101	Morganella morganii	12
Candida albicans	94	Enterococcus faecium (VRE2)	11
Clostridium difficile	89	Hafnia alvei	9
Escherichia coli (ESBL)	62	Mycobacterium tuberculosis	9
Klebsiella oxytoca	51	Raoultella ornithinolytica	9
Candida glabrata	48	Candida tropicalis	8
Enterococcus faecium	42	Propionibacterium acnes	8
Haemophilus parainfluenzae	37	Streptococcus dysgalactiae ssp. equisimilis	8
Serratia marcescens	35	Bacteroides fragilis	7
B. pertussis IgG WB	34	Enterobacter cloacae (ESBL)	7
Staphylococcus hominis	29	koagulase-negative Staphylokokken	7
Streptococcus agalactiae	29	Moraxella catarrhalis	7
Stenotrophomonas maltophilia	27	Streptococcus pneumoniae	7
Pseudomonas aeruginosa (MBL)	26	Citrobacter braakii	6
Enterobacter aerogenes	25	Clostridium perfringens	6
Proteus vulgaris	23	Haemophilus parahaemolyticus	6
Staphylococcus aureus ***MRSA***	23	Klebsiella oxytoca (ESBL)	6
Citrobacter freundii	22	Micrococcus luteus	6
Candida sp.	21		



UKL Innere 2015

Escherichia coli

	AMP	ASU	PIP	PIT	AZT	CFB	CXM	CTX	CAZ	CTA	IMP	MER	ERT	COL	AMK	GEN	TOB	FOS	SXT	CIP	LEV	MOX	DOX
n	565	565	566	565	565	294	566	566	565	564	566	564	565	565	565	565	565	566	565	566	565	566	563
S	46	56	49	91	86	89	81	87	86	75	100	100	99	99	99	94	93	86	70	76	78	77	
I			3	3	2			1	6		0	0	0		1	0	1		1	1	1	1	
R	54	44	48	6	12	11	18	13	8	25	0	0	0	1	0	6	5	14	29	23	21	22	

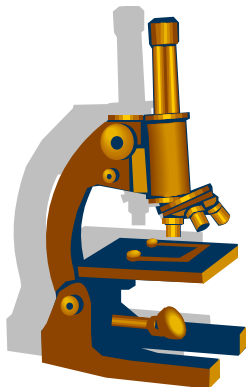
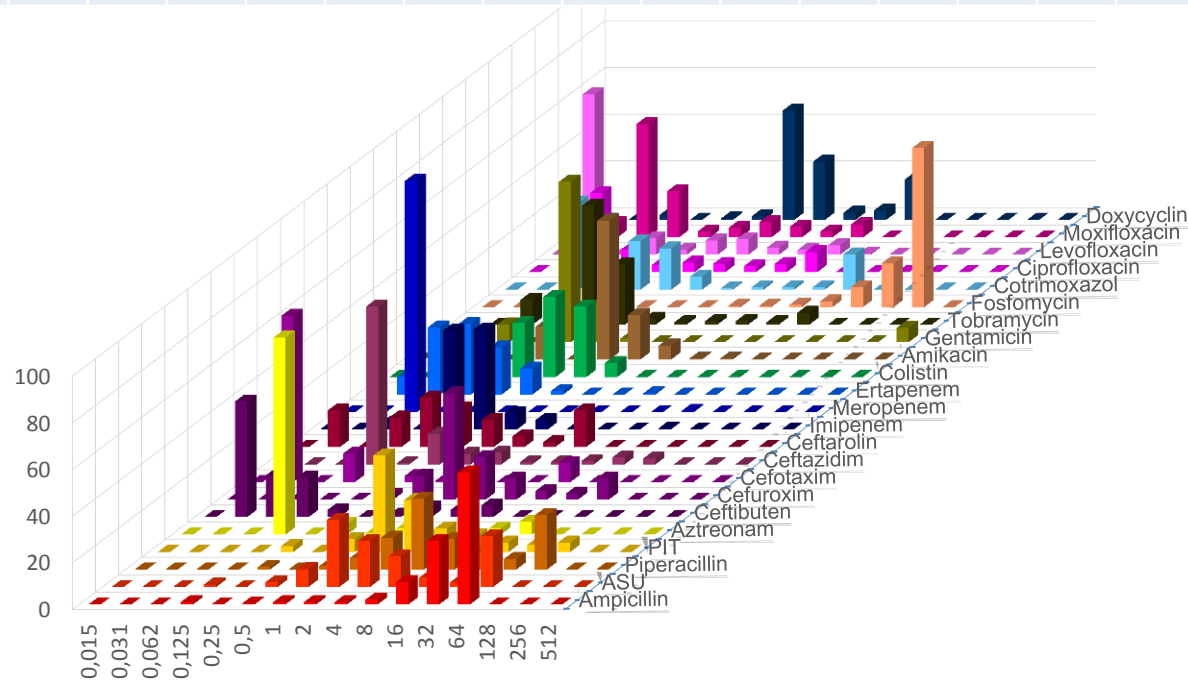


UKL Innere 2015

Klebsiella pneumoniae



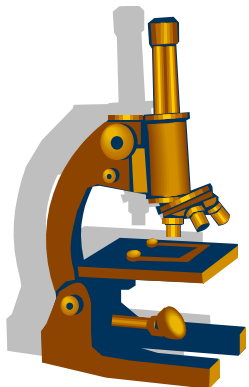
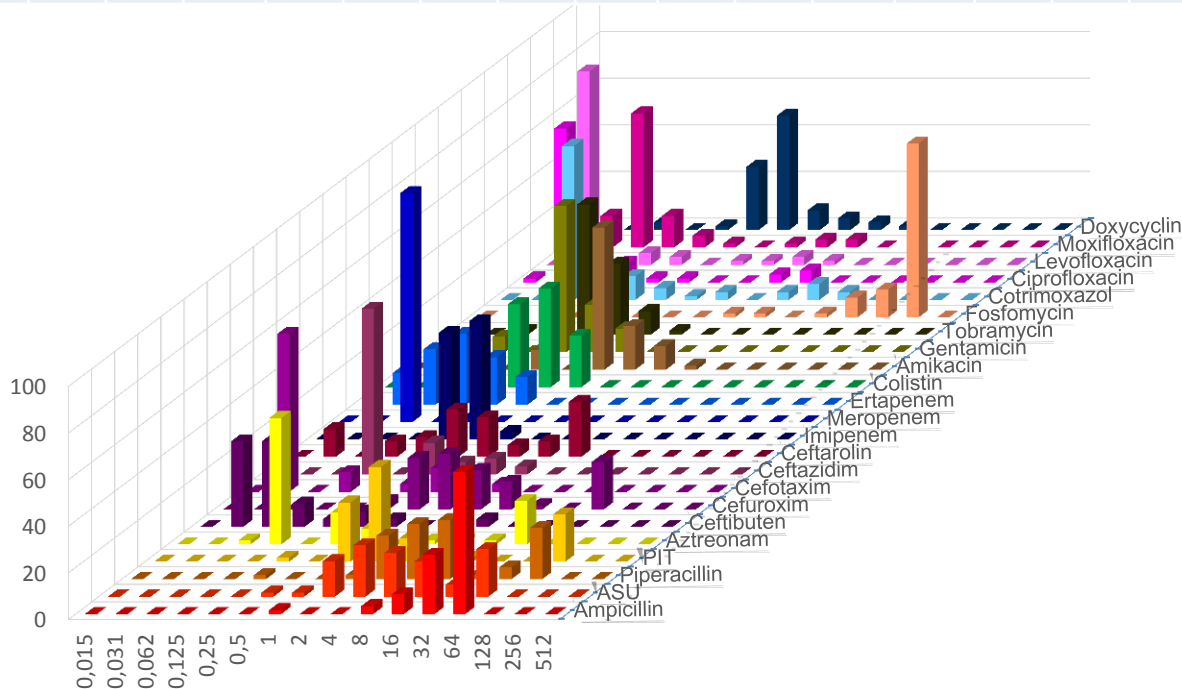
	AMP	ASU	PIP	PIT	AZT	CFB	CXM	CTX	CAZ	CTA	IMP	MER	ERT	COL	AMK	GEN	TOB	FOS	SXT	CIP	LEV	MOX	DOX
n	198	198	198	198	198	101	198	198	198	198	198	198	198	198	198	198	198	198	198	198	198	198	197
S	7	72	52	82	89	88	85	91	86	78	99	99	98	100	99	94	91	2	82	82	90	81	
I			13	7	3			1	6		0	0	2		1	0	2		1	4	3	7	
R	93	28	35	11	8	12	15	8	8	22	1	1	1	0	0	6	8	98	17	15	7	13	



UKL Innere 2015

Klebsiella oxytoca

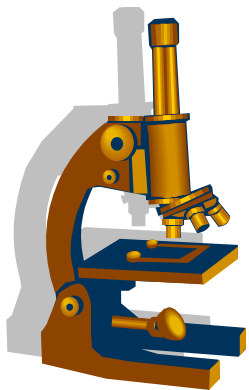
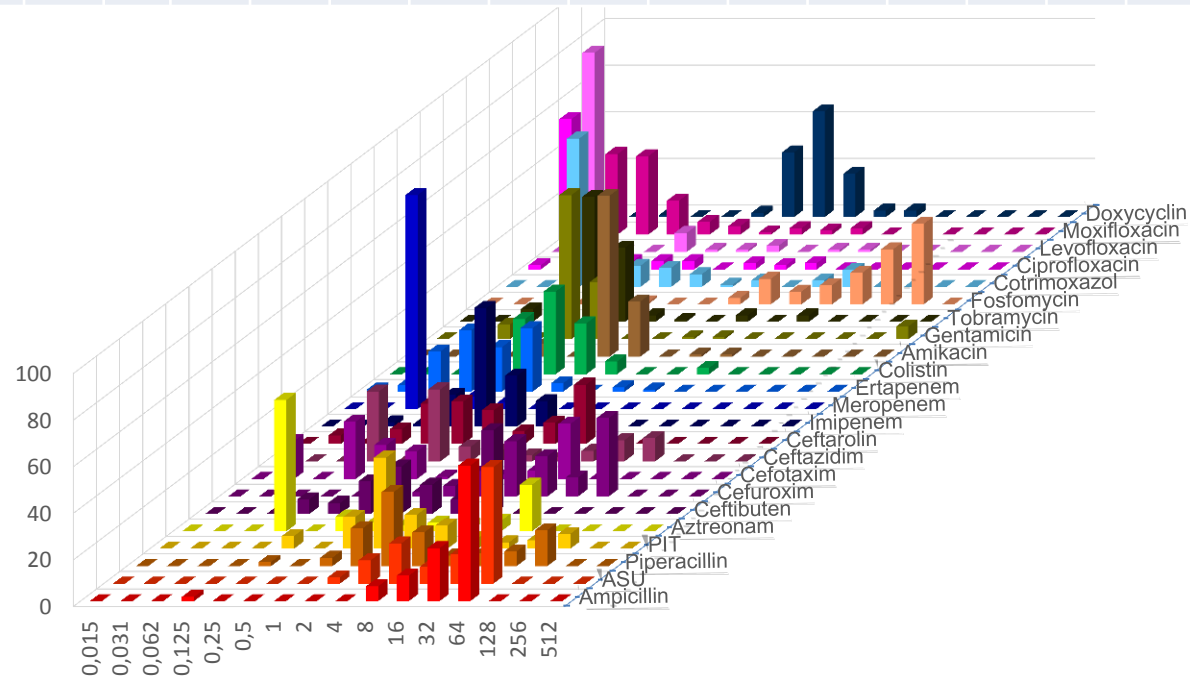
	AMP	ASU	PIP	PIT	AZT	CFB	CXM	CTX	CAZ	CTA	IMP	MER	ERT	COL	AMK	GEN	TOB	FOS	SXT	CIP	LEV	MOX	DOX
n	59	59	59	59	59	30	59	59	59	59	59	58	59	59	59	59	59	59	59	59	59	59	59
S	5	59	46	78	76	97	78	95	90	64	100	100	100	100	100	100	100	3	86	92	93	92	
I			25	2	2			2	10		0	0	0		0	0	0		0	0	2	0	
R	95	41	29	20	22	3	20	3	0	36	0	0	0	0	0	0	0	97	14	8	5	8	



UKL Innere 2015

Enterobacter cloacae

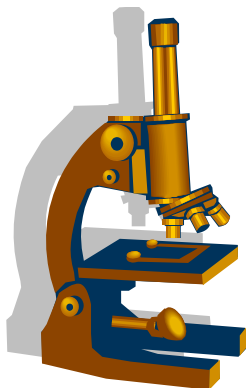
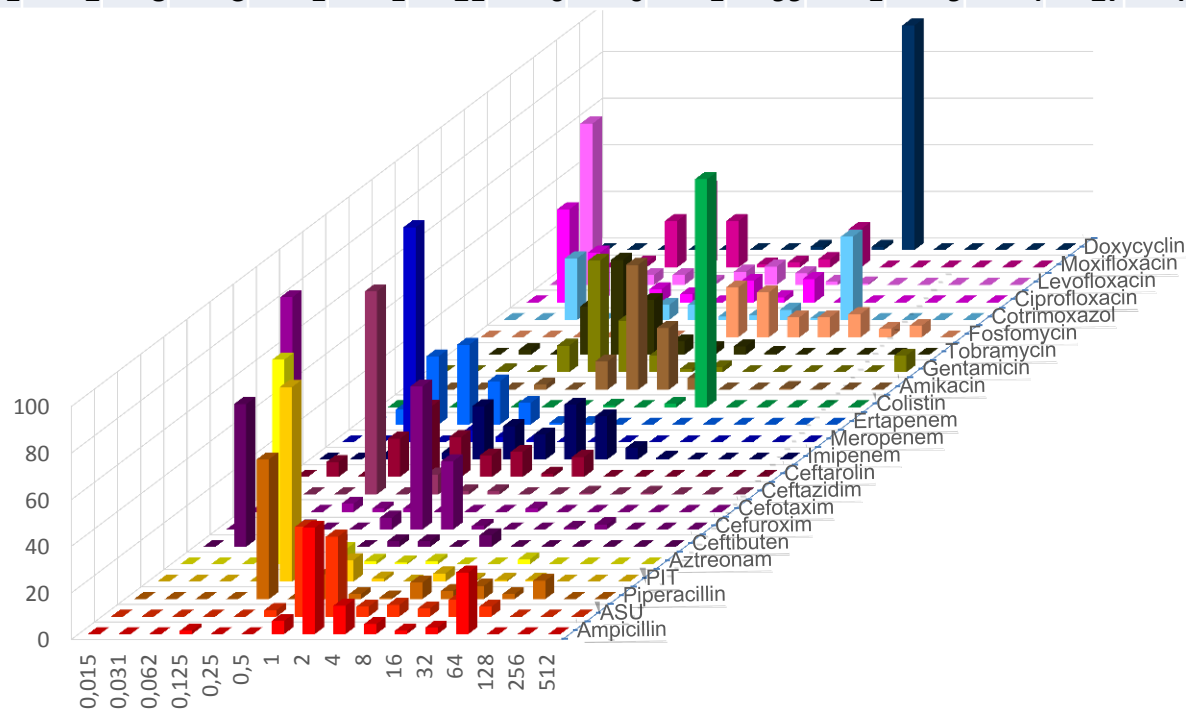
	AMP	ASU	PIP	PIT	AZT	CFB	CXM	CTX	CAZ	CTA	IMP	MER	ERT	COL	AMK	GEN	TOB	FOS	SXT	CIP	LEV	MOX	DOX
n	110	110	110	110	110	64	110	110	110	110	110	110	110	110	110	110	110	110	110	110	110	110	108
S	8	30	68	83	66	45	41	68	67	60	100	100	94	97	99	93	95	20	87	93	95	92	
I			5	5	6			3	7		0	0	4		1	1	0		3	0	3	1	
R	92	70	27	13	27	55	56	29	25	40	0	0	3	3	0	6	5	80	10	7	2	7	



UKL Innere 2015

Proteus mirabilis

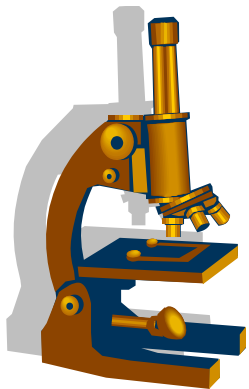
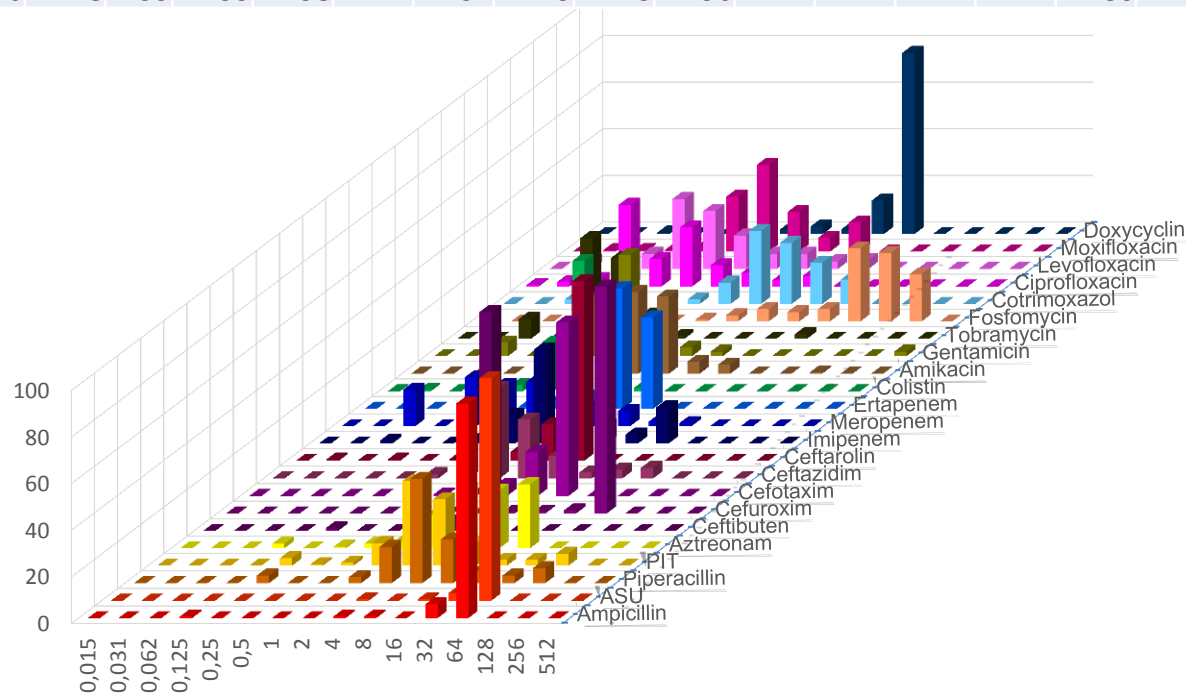
	AMP	ASU	PIP	PIT	AZT	CFB	CXM	CTX	CAZ	CTA	IMP	MER	ERT	COL	AMK	GEN	TOB	FOS	SXT	CIP	LEV	MOX	DOX
n	140	140	140	140	140	80	140	140	140	140	140	140	140	140	140	140	140	140	140	140	140	140	139
S	69	85	81	98	96	93	97	99	97	79	52	100	99	1	99	89	93	73	57	79	85	76	
I			4	1	2			0	1		42	0	1		0	1	3		2	0	8	1	
R	31	15	16	1	2	8	3	1	1	21	6	0	1	99	1	9	4	27	41	21	7	22	



UKL Innere 2015

Pseudomonas aeruginosa

	AMP	ASU	PIP	PIT	AZT	CFB	CXM	CTX	CAZ	CTA	IMP	MER	ERT	COL	AMK	GEN	TOB	FOS	SXT	CIP	LEV	MOX	DOX
n	151	153	154	154	153	82	154	153	153	153	154	153	153	154	154	154	153	153	153	154	153	153	153
S	2	1	66	80	5	1	1	1	15	3	56	82	1	99	95	92	98	14	14	78	80	27	
I			19	10	18			1	64		24	15	3		4	4	0		31	9	7	37	
R	98	99	15	10	78	99	99	98	21	97	19	3	96	1	1	4	2	86	54	13	14	35	

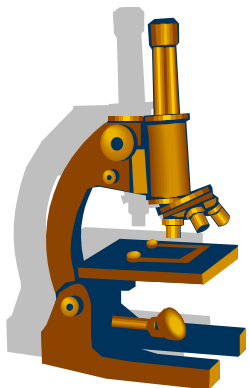
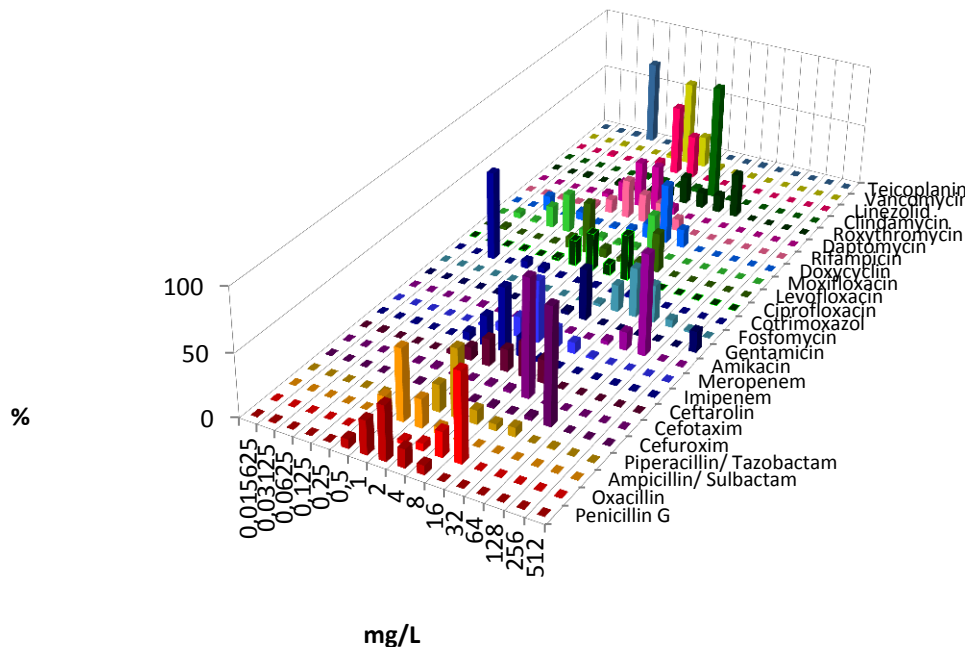


UKL Innere 2015

Enterococcus faecalis



	ASU	PIT	IMP	SXT	CIP	LEV	DAP	LIN	VAN	TPL
n	135		137	136	135	135		137	137	137
S	100		98	0	63	64	?	100	99	99
I	0		2	82				?		
R	0		0	18	37	36	?	0	1	1

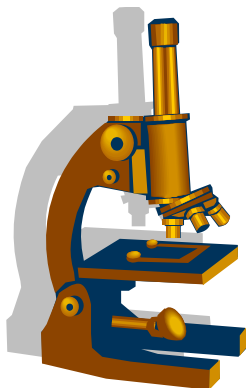
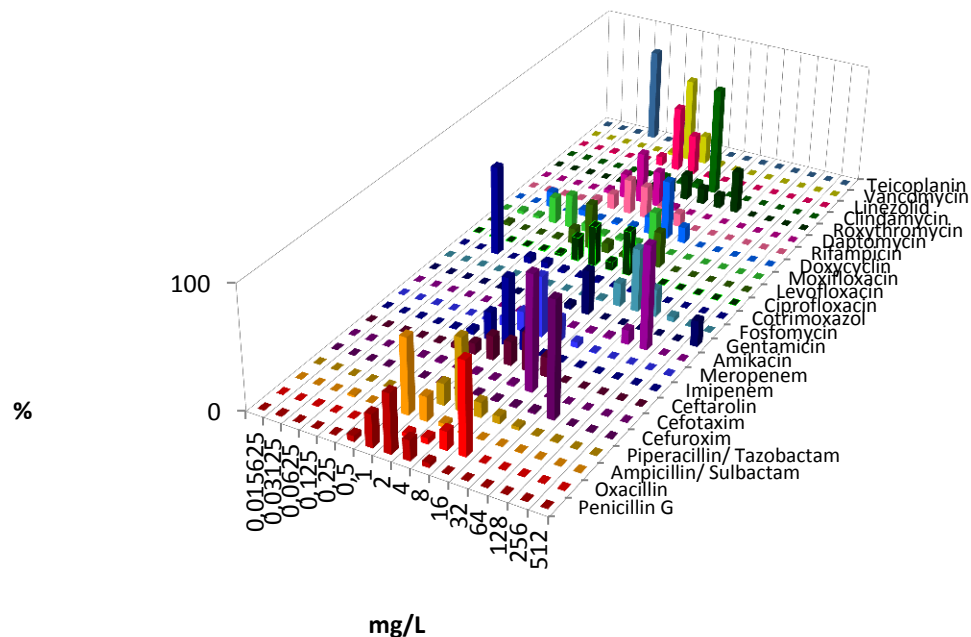


UKL Innere 2015

Enterococcus faecium



	ASU	PIT	IMP	SXT	CIP	LEV	DAP	LIN	VAN	TPL
n	63		65	65	64	65		65	67	67
S	0		0	0	9	14	?	100	69	69
I	0		0	69				?		
R	100		100	31	91	86	?	0	31	31

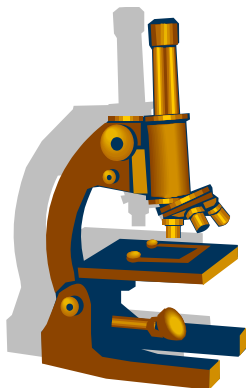
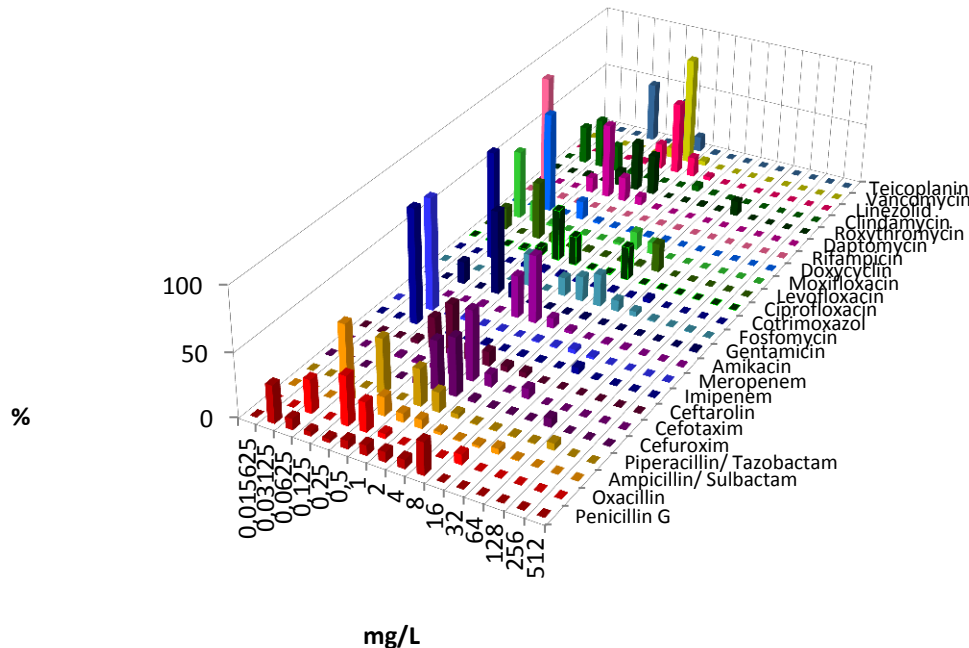


UKL Innere 2015

Staphylococcus aureus



	PEN	OXA	ASU	PIT	CXM	CTX	CTA	IMP	MER	AMK	GEN	FOS	SXT	CIP	LEV	MOX	DOX	RIF	DAP	ROX	CLI	LIN	VAN	TPL		
n	275	275	275	275	275	275	275	275	275	275	275	275	275	275	275	275	275	275	275	275	275	275	275	275	275	
S	42	92					92			99	97	98	94	72	74	74	98	99	100	86	94	100	100	100	100	
I										0				1	0	1	0	1	0		0	0				1
R	58	8					8			1	3	2	5	27	24	26	1	1	0	14	6	0	0	0	-1	



UKL Innere 2015

Staphylococcus epidermidis



Universitätsklinikum
Leipzig

Medizin ist unsere Berufung.



ZENTRUM FÜR
INFEKTIONSMEZIN

	PEN	OXA	ASU	PIT	CXM	CTX	CTA	IMP	MER	AMK	GEN	FOS	SXT	CIP	LEV	MOX	DOX	RIF	DAP	ROX	CLI	LIN	VAN	TPL	
n	155	155	155	155	155	155	155	155	154	155	155	155	155	155	155	155	155	155	155	155	155	155	155	155	155
S	17	35					86			88	57	82	66	35	54	52	88	96	99	36	53	100	100	100	
I										2			10	1	16	19	1	1		0	7				
R	83	65					14			10	43	18	24	65	30	29	12	3	1	64	40	0	0	0	

