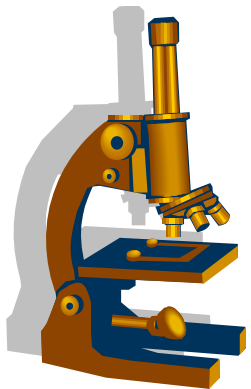




# Resistenzepidemiologie 2015

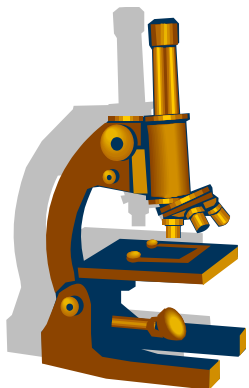
Arne C. Rodloff



# Erreger

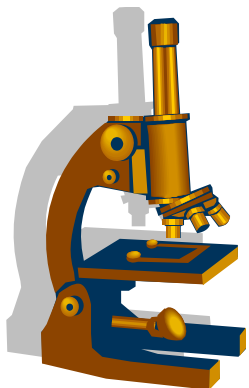
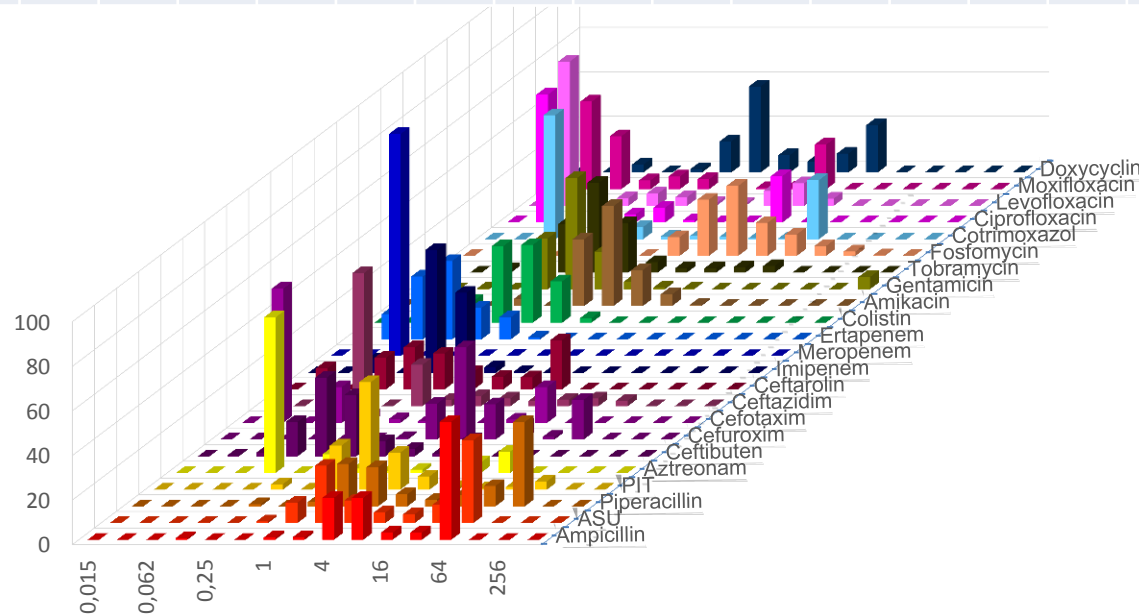
## Chirurgische ITS

Escherichia coli	352	Staphylococcus capitis	18
Staphylococcus aureus	228	Staphylococcus haemolyticus	17
Staphylococcus epidermidis	193	Citrobacter koseri	15
Enterococcus faecalis	156	Streptococcus anginosus	15
Candida albicans	149	Haemophilus influenzae	14
Pseudomonas aeruginosa	128	Staphylococcus hominis	13
Klebsiella pneumoniae	107	Enterobacter aerogenes	12
Proteus mirabilis	97	Haemophilus parainfluenzae	12
Enterobacter cloacae	96	Candida sp.	11
Enterococcus faecium	88	Candida tropicalis	11
Escherichia coli (ESBL)	74	Streptococcus pyogenes	10
Serratia marcescens	74	Bacillus cereus	9
Candida glabrata	48	Bacteroides thetaiotaomicron	8
Klebsiella pneumoniae (ESBL)	42	Candida krusei	8
Enterococcus faecium (VRE2)	41	Candida parapsilosis	8
Pseudomonas aeruginosa (MBL)	39	Streptococcus constellatus	8
Morganella morganii	34	Aspergillus fumigatus	7
Acinetobacter baumannii	33	Bacteroides vulgatus	7
Klebsiella oxytoca	31	Eggerthella lenta	7
Stenotrophomonas maltophilia	28	Hafnia alvei	6
Clostridium difficile	26	Streptococcus agalactiae	6
Staphylococcus aureus ***MRSA***	26	Streptococcus mitis-Gruppe	6
Propionibacterium acnes	25	Bacteroides ovatus	5
Proteus vulgaris	23	Enterobacter cloacae (ESBL)	5
Bacteroides fragilis	22	Raoultella planticola	5
Citrobacter freundii	18		





	AMP	ASU	PIP	PIT	AZT	CFB	CXM	CTX	CAZ	CTA	IMP	MER	ERT	COL	AMK	GEN	TOB	FOS	SXT	CIP	LEV	MOX	DOX
n	404	404	404	404	404	232	404	404	404	402	404	403	404	404	404	403	404	404	404	404	404	404	401
S	41	51	45	93	80	88	74	82	81	67	100	100	99	100	99	94	91	84	72	78	79	77	
I			3	1	2			0	8		0	0	1		0	1	2		1	1	1	1	
R	59	49	52	6	17	13	25	18	11	33	0	0	0	0	0	6	7	16	27	21	20	21	

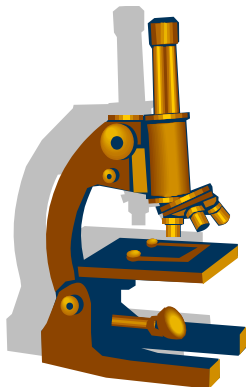
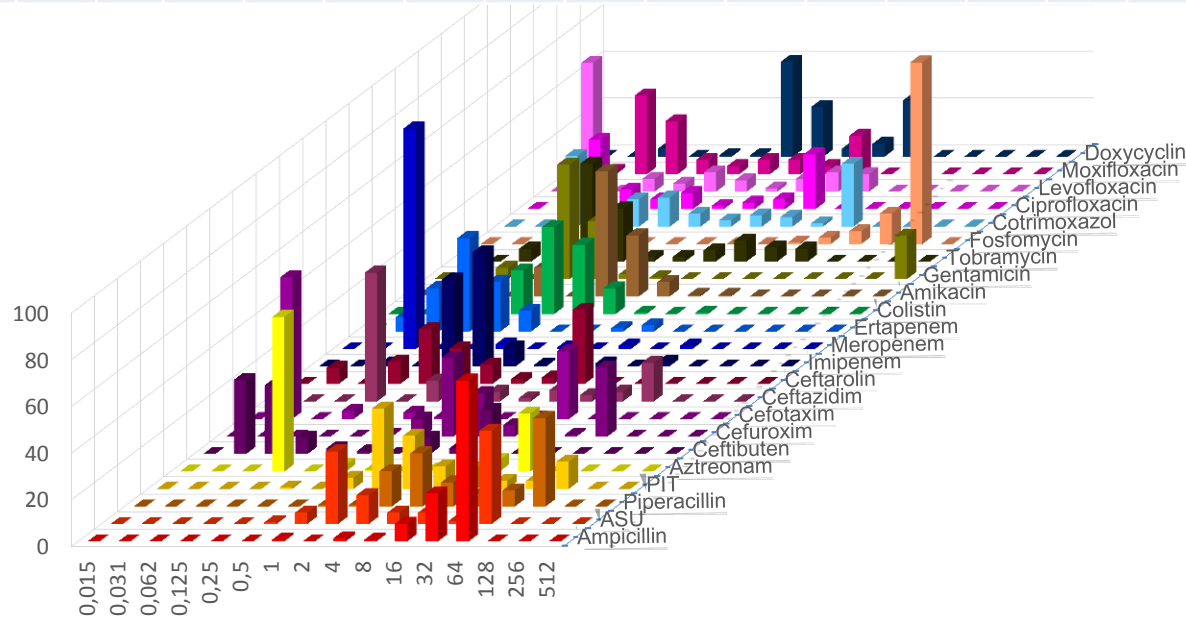


# UKL Chirurgische ITS 2015

## Klebsiella pneumoniae



	AMP	ASU	PIP	PIT	AZT	CFB	CXM	CTX	CAZ	CTA	IMP	MER	ERT	COL	AMK	GEN	TOB	FOS	SXT	CIP	LEV	MOX	DOX
n	145	145	145	145	145	85	145	145	145	145	145	145	145	145	145	145	145	145	145	145	145	145	145
S	3	54	39	72	70	72	66	70	66	63	97	97	96	99	99	81	74	1	63	68	77	68	
I			10	9	1			1	6		1	1	0		1	0	5		5	1	1	1	6
R	97	46	50	19	30	28	34	30	28	37	2	1	4	1	0	19	21	99	32	30	21	26	

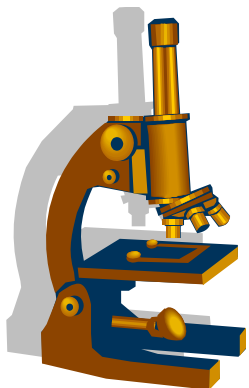
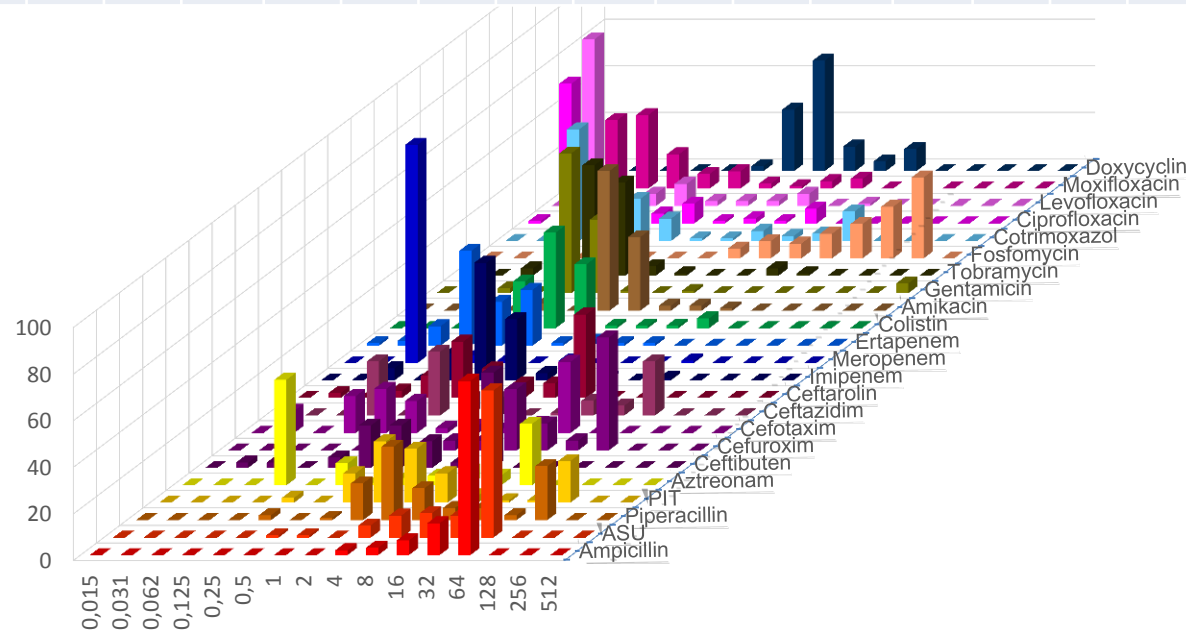


# UKL Chirurgische ITS 2015

## Enterobacter cloacae



	AMP	ASU	PIP	PIT	AZT	CFB	CXM	CTX	CAZ	CTA	IMP	MER	ERT	COL	AMK	GEN	TOB	FOS	SXT	CIP	LEV	MOX	DOX
n	95	95	95	95	95	44	95	95	95	95	95	95	96	95	95	95	95	95	94	95	95	95	95
S	5	17	64	77	56	45	36	60	58	52	97	99	95	94	99	95	96	18	78	89	92	89	
I			5	3	7			3	7		2	0	1		1	1	0		4	1	2	2	
R	95	83	31	20	37	55	61	37	35	48	1	1	4	6	0	4	4	82	18	9	6	8	

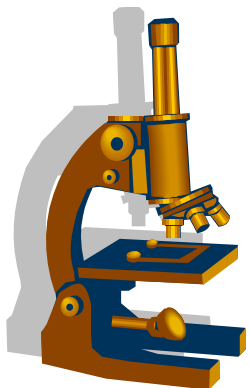
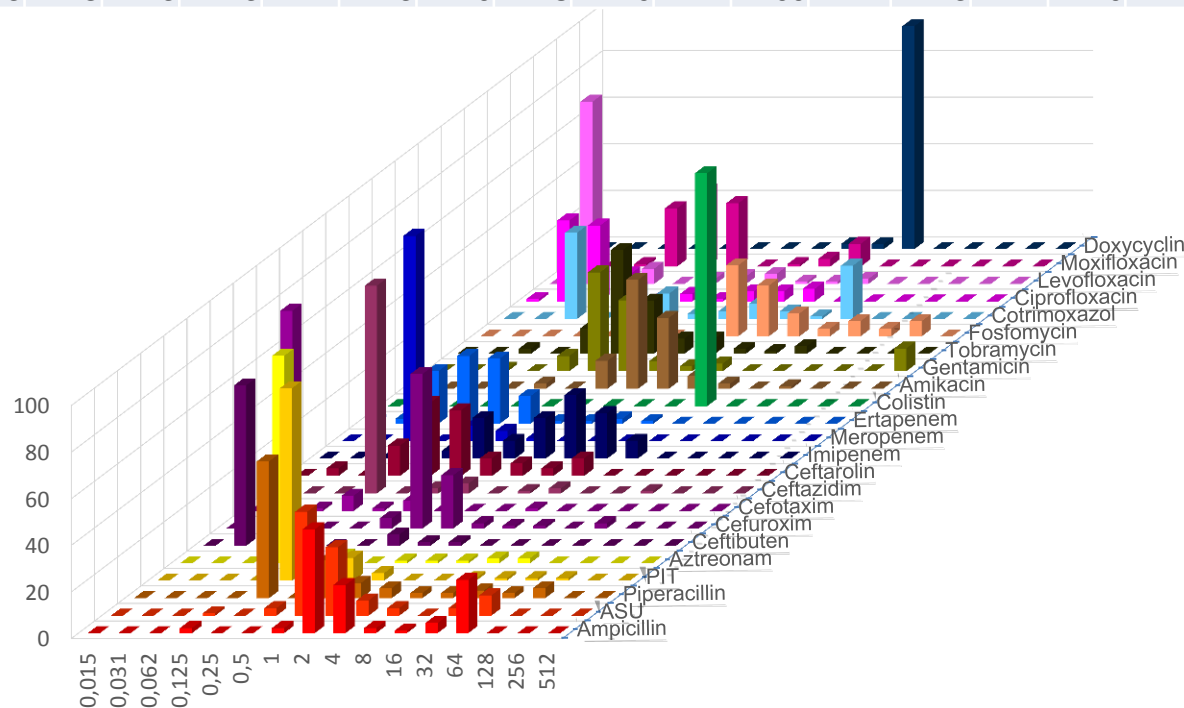


# UKL Chirurgische ITS 2015

## Proteus mirabilis

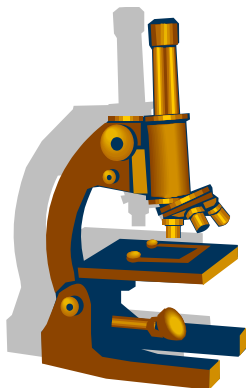
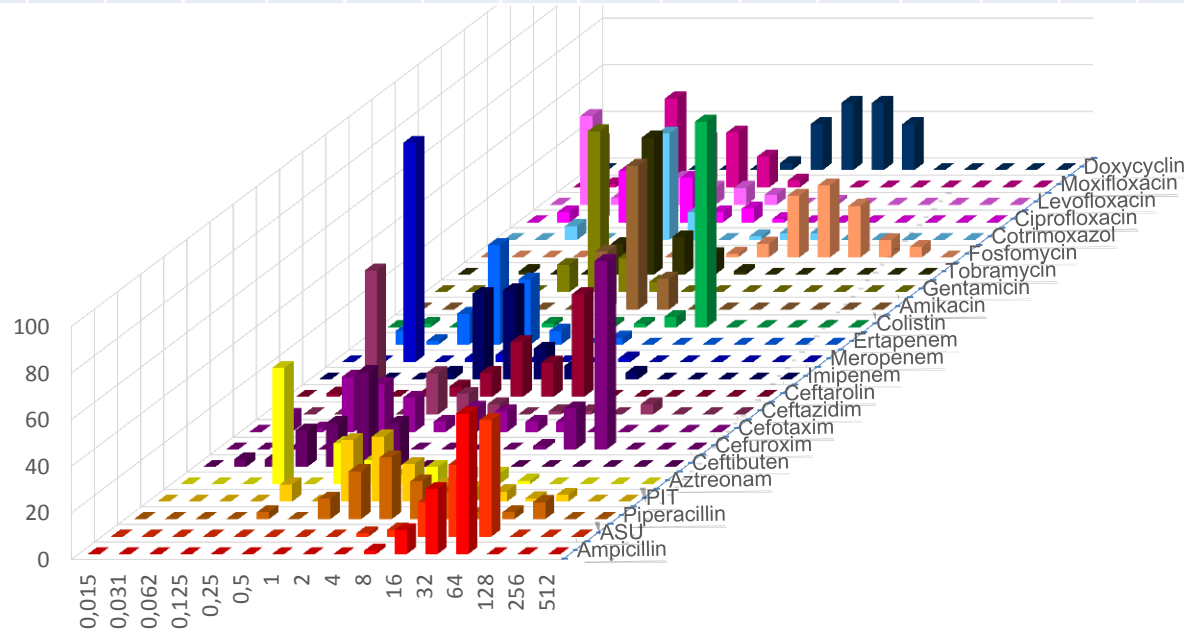


	AMP	ASU	PIP	PIT	AZT	CFB	CXM	CTX	CAZ	CTA	IMP	MER	ERT	COL	AMK	GEN	TOB	FOS	SXT	CIP	LEV	MOX	DOX
n	92	92	92	92	92	61	92	92	92	92	92	92	93	92	92	92	92	92	92	92	92	92	92
S	72	88	88	96	92	97	97	99	96	84	46	100	95	0	97	85	87	80	66	85	91	86	
I			2	1	2			0	1		47	0	1		2	2	7		7	1	4	0	
R	28	12	10	3	5	3	3	1	3	16	8	0	4	100	1	13	7	20	27	14	4	14	





	AMP	ASU	PIP	PIT	AZT	CFB	CXM	CTX	CAZ	CTA	IMP	MER	ERT	COL	AMK	GEN	TOB	FOS	SXT	CIP	LEV	MOX	DOX
n	68	68	68	68	68	32	68	68	68	68	68	68	68	68	68	68	68	68	68	68	68	68	66
S	1	4	75	85	78	100	0	72	88	18	91	99	91	6	100	100	90	35	93	88	94	84	
I			12	6	12			10	4		6	1	6		0	0	9		1	4	4	13	
R	99	96	13	9	10	0	90	18	7	82	3	0	3	94	0	0	1	65	6	7	1	3	

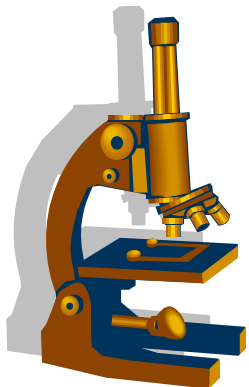
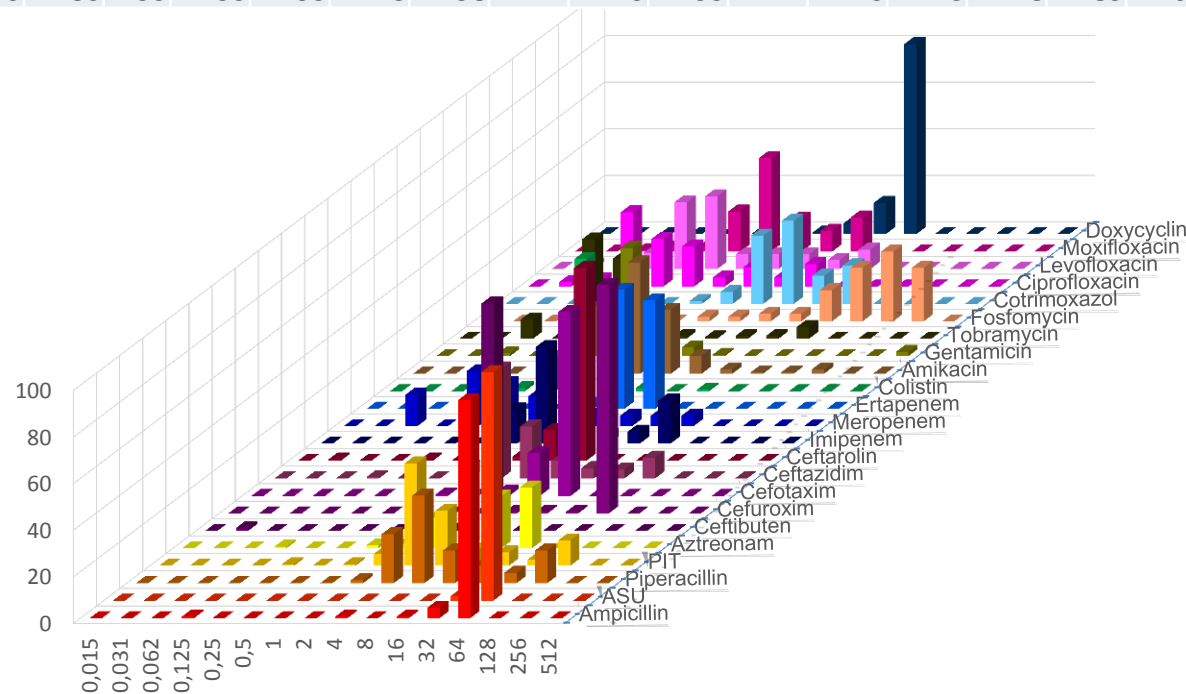


# UKL Chirurgische ITS 2015

## Pseudomonas aeruginosa



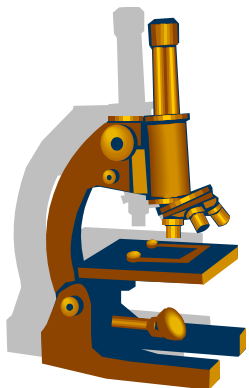
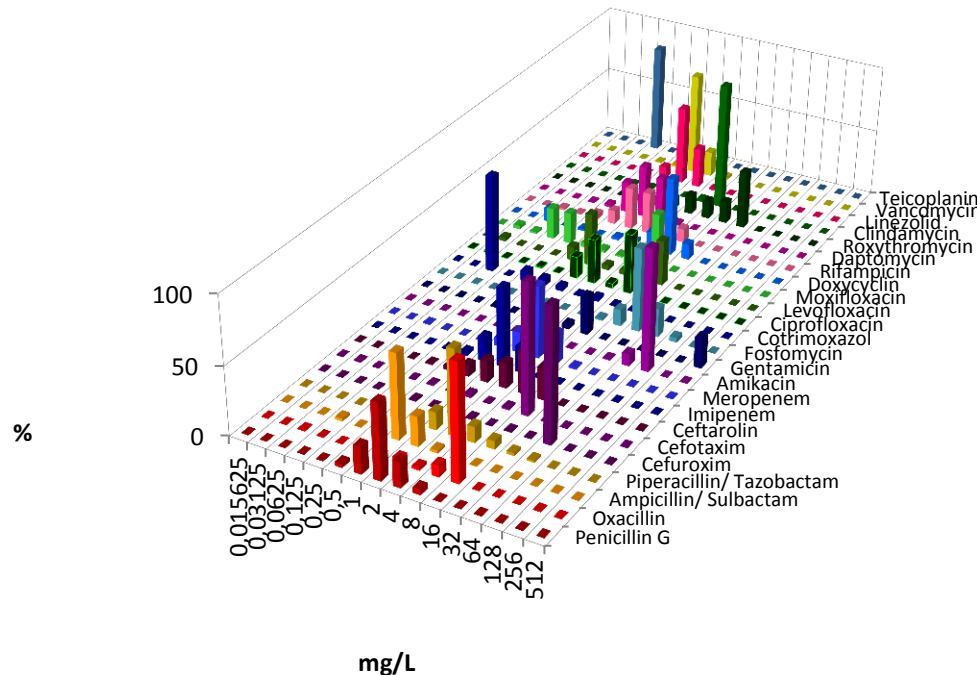
	AMP	ASU	PIP	PIT	AZT	CFB	CXM	CTX	CAZ	CTA	IMP	MER	ERT	COL	AMK	GEN	TOB	FOS	SXT	CIP	LEV	MOX	DOX
n	156	157	157	157	157	83	157	157	157	157	157	157	157	157	157	157	157	157	157	157	157	157	157
S	1	0	60	74	2	1	1	1	6	2	57	81	1	98	95	90	92	11	6	75	75	22	
I			14	7	15			0	69		20	10	0		2	4	1		29	4	6	40	
R	99	100	26	19	83	99	99	99	25	98	24	9	99	2	3	3	8	89	64	22	18	38	





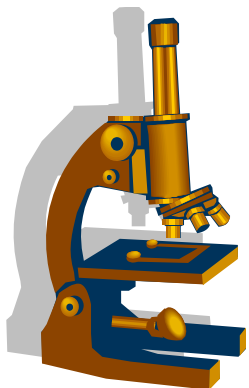
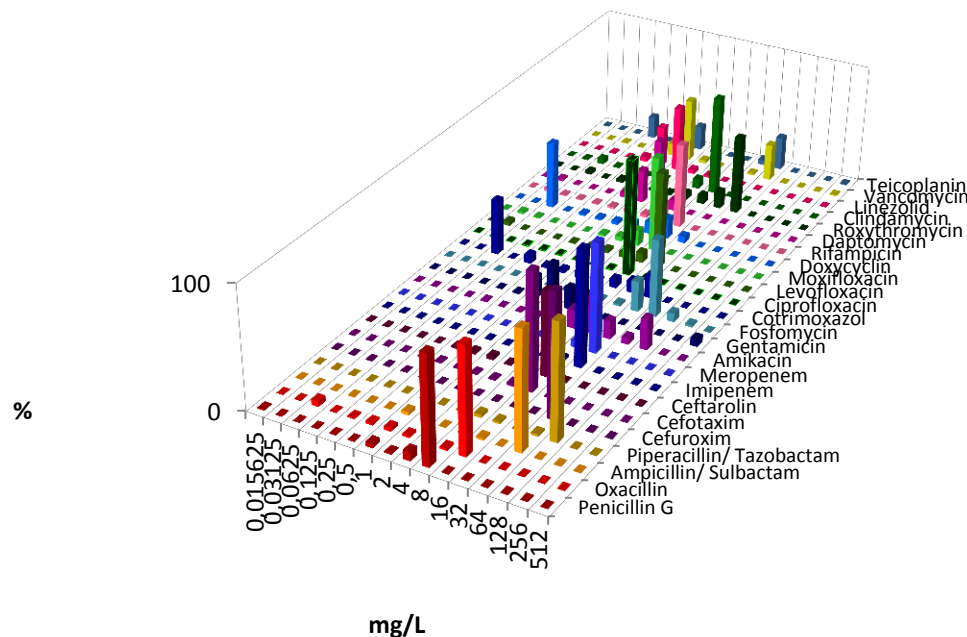


	ASU	PIT	IMP	SXT	CIP	LEV	DAP	LIN	VAN	TPL
n	145		149	148	147	145		148	148	148
S	100		99	0	55	59?		100	100	100
I	0		1	89			?			
R	0		0	11	45	41?		0	0	0





	ASU	PIT	IMP	SXT	CIP	LEV	DAP	LIN	VAN	TPL	
n	111		116	113	112	112			116	117	118
S	3		3	0	4	13	?	100	67	67	
I	0		0	58				?			
R	97		97	42	96	88	?		0	33	33

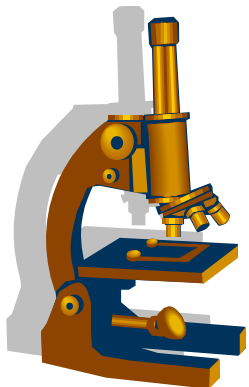
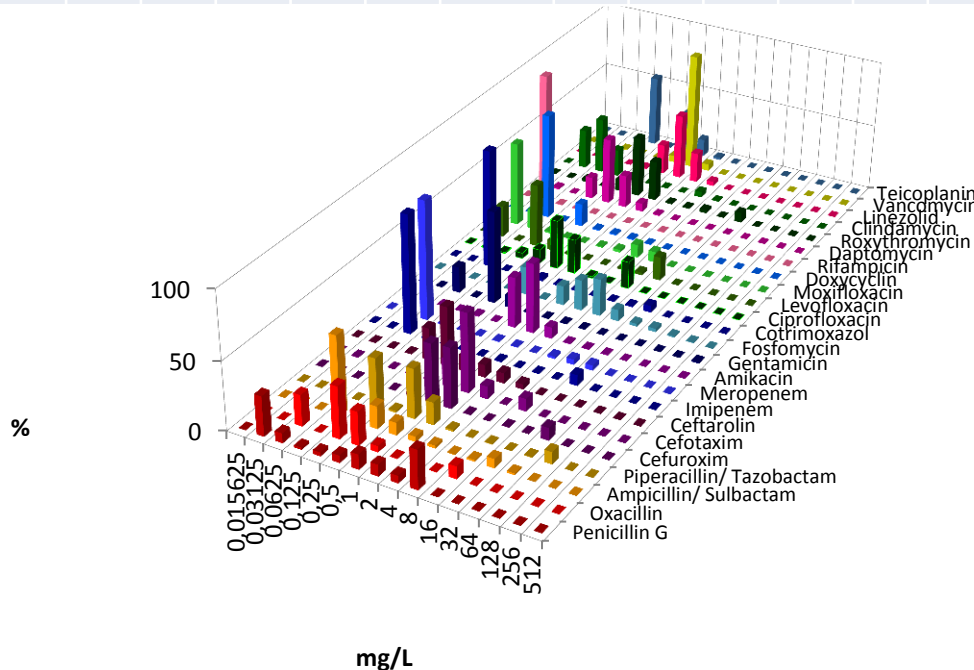


# UKL Chirurgische ITS 2015

## Staphylococcus aureus



	PEN	OXA	ASU	PIT	CXM	CTX	CTA	IMP	MER	AMK	GEN	FOS	SXT	CIP	LEV	MOX	DOX	RIF	DAP	ROX	CLI	LIN	VAN	TPL
n	237	237	236	237	237	237	237	237	237	237	237	237	236	237	237	237	237	236	237	237	237	237	237	237
S	38	90					89			99	98	96	93	78	79	79	99	99	99	88	95	100	100	100
I										0			0	1	1	1	1	0		1	0			
R	62	10					11			0	2	4	6	20	20	20	0	0	1	11	5	0	0	0



# UKL Chirurgische ITS 2015

## Staphylococcus epidermidis



	PEN	OXA	ASU	PIT	CXM	CTX	CTA	IMP	MER	AMK	GEN	FOS	SXT	CIP	LEV	MOX	DOX	RIF	DAP	ROX	CLI	LIN	VAN	TPL
n	190	190	189	190	189	190	190	191	189	189	190	189	189	190	189	189	189	190	189	190	190	190	190	191
S	15	31					86			74	46	69	57	27	46	41	90	89	99	32	48	100	100	100
I										1			11	2	17	21	3	0		0	3			
R	85	69					14			26	54	31	32	71	37	38	7	11	1	68	48	0	0	0

