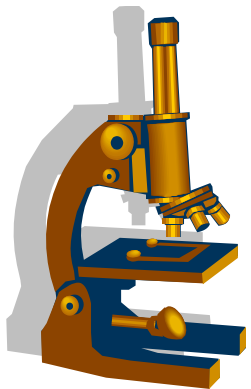




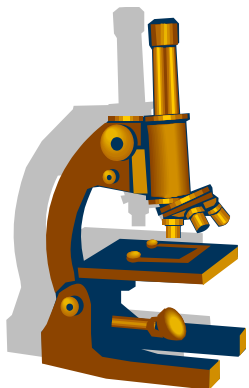
# Resistenzepidemiologie 2015

Arne C. Rodloff



# Erreger Chirurgie

Escherichia coli	386	Staphylococcus capitis	18
Staphylococcus aureus	309	Streptococcus pyogenes	18
Enterococcus faecalis	301	Acinetobacter baumannii	17
Staphylococcus epidermidis	227	Fingoldia magna	16
Proteus mirabilis	134	Stenotrophomonas maltophilia	16
Pseudomonas aeruginosa	128	Citrobacter freundii	15
Klebsiella pneumoniae	114	Enterobacter aerogenes	13
Candida albicans	93	Streptococcus dysgalactiae ssp. equisimilis	13
Enterobacter cloacae	84	Corynebacterium striatum	12
Enterococcus faecium	74	Propionibacterium acnes	12
Escherichia coli (ESBL)	74	Streptococcus intermedius	12
Clostridium difficile	63	Candida tropicalis	11
Bacteroides fragilis	48	Peptoniphilus asaccharolyticus	11
Staphylococcus aureus ***MRSA***	43	Bacillus cereus	10
Proteus vulgaris	42	Streptococcus mitis-Gruppe	10
Pseudomonas aeruginosa (MBL)	36	Candida parapsilosis	9
Klebsiella pneumoniae (ESBL)	33	Staphylococcus lugdunensis	9
Candida glabrata	32	Streptococcus constellatus	9
Klebsiella oxytoca	28	Anaerococcus prevotii	8
Serratia marcescens	27	Citrobacter koseri	8
Morganella morganii	24	Enterobacter cloacae (ESBL)	8
Streptococcus anginosus	23	Enterococcus avium	8
Enterococcus faecium (VRE2)	22	Bacteroides thetaiotaomicron	7
Staphylococcus hominis	22	Haemophilus parainfluenzae	7
Streptococcus agalactiae	22	koagulase-negative Staphylokokken	7
Staphylococcus haemolyticus	21		

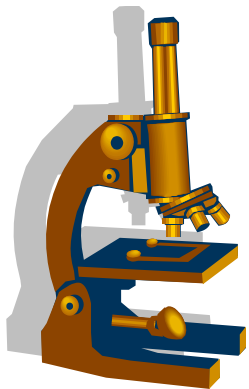
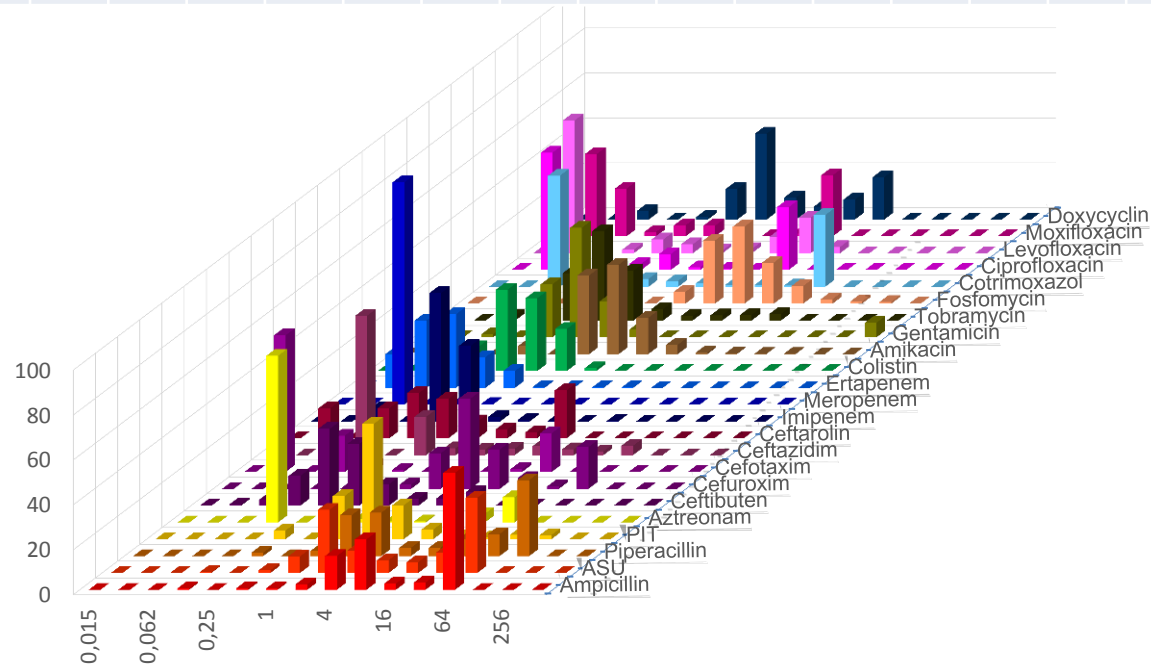


# UKL Chirurgie 2015

## Escherichia coli



	AMP	ASU	PIP	PIT	AZT	CFB	CXM	CTX	CAZ	CTA	IMP	MER	ERT	COL	AMK	GEN	TOB	FOS	SXT	CIP	LEV	MOX	DOX
n	651	651	651	651	651	348	651	651	651	651	651	650	651	651	651	650	650	651	651	651	651	651	648
S	42	53	45	94	81	88	76	81	82	72	100	100	99	100	99	93	90	88	66	70	72	70	
I			4	1	1			0	5		0	0	0		1	0	2		1	1	2	2	
R	58	47	51	5	18	12	24	19	12	28	0	0	0	0	1	7	8	12	33	29	26	29	

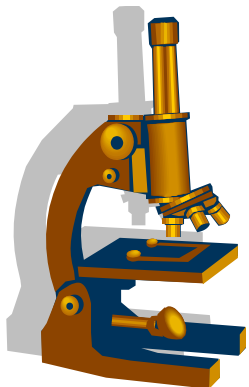
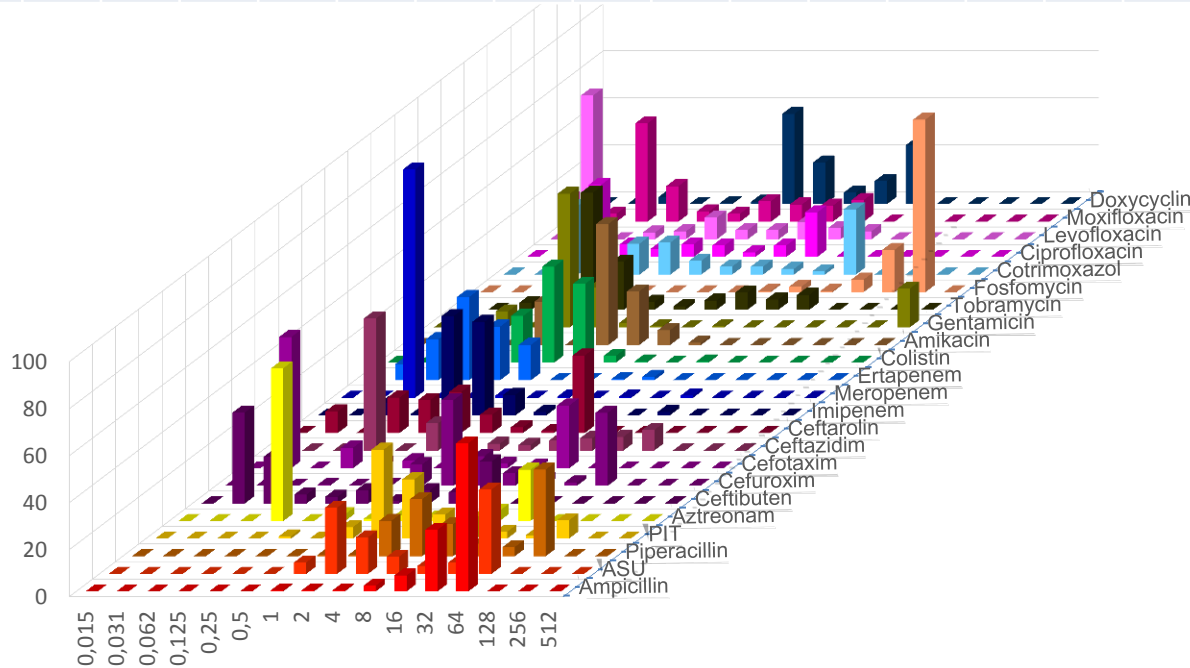


# UKL Chirurgie 2015

## Klebsiella pneumoniae



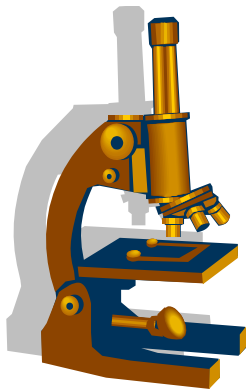
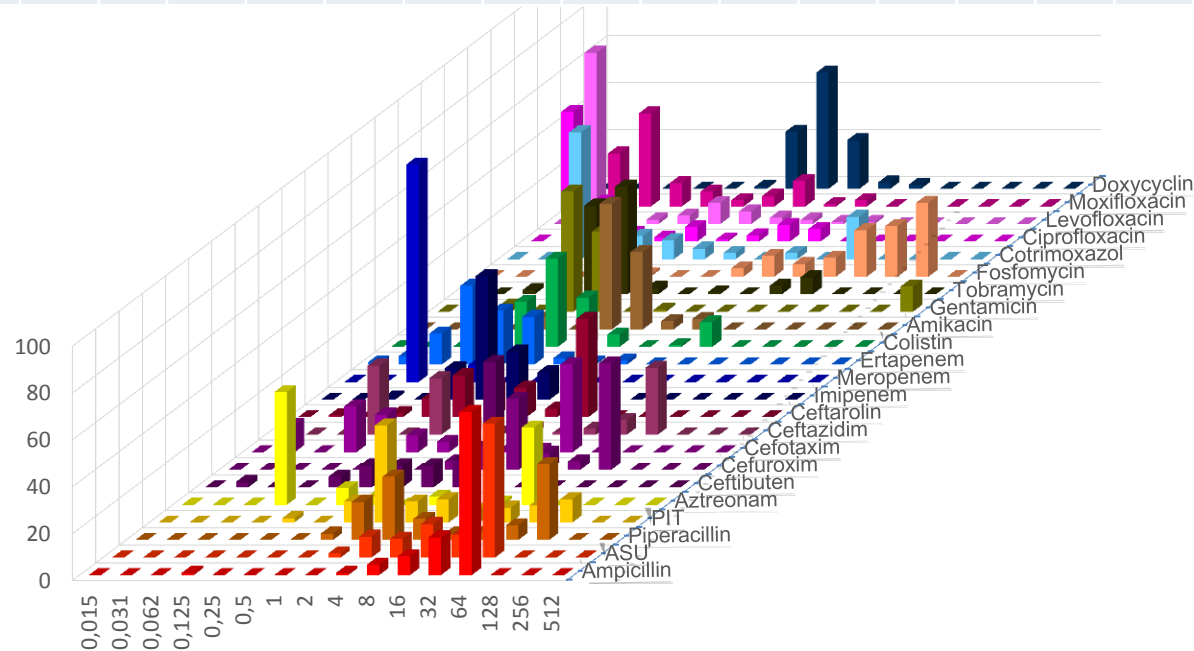
	AMP	ASU	PIP	PIT	AZT	CFB	CXM	CTX	CAZ	CTA	IMP	MER	ERT	COL	AMK	GEN	TOB	FOS	SXT	CIP	LEV	MOX	DOX
n	206	206	206	206	206	106	206	206	206	206	206	206	206	206	206	206	205	206	206	206	206	206	204
S	4	56	40	79	69	72	65	70	70	64	98	99	98	99	100	83	78	3	65	69	81	68	
I			14	9	4			0	5		0	0	0		0	0	4		3	5	4	9	
R	96	44	46	12	27	28	35	30	24	36	1	1	2	1	0	17	18	97	32	26	16	23	



# UKL Chirurgie 2015

## Enterobacter cloacae

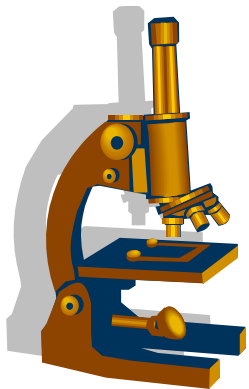
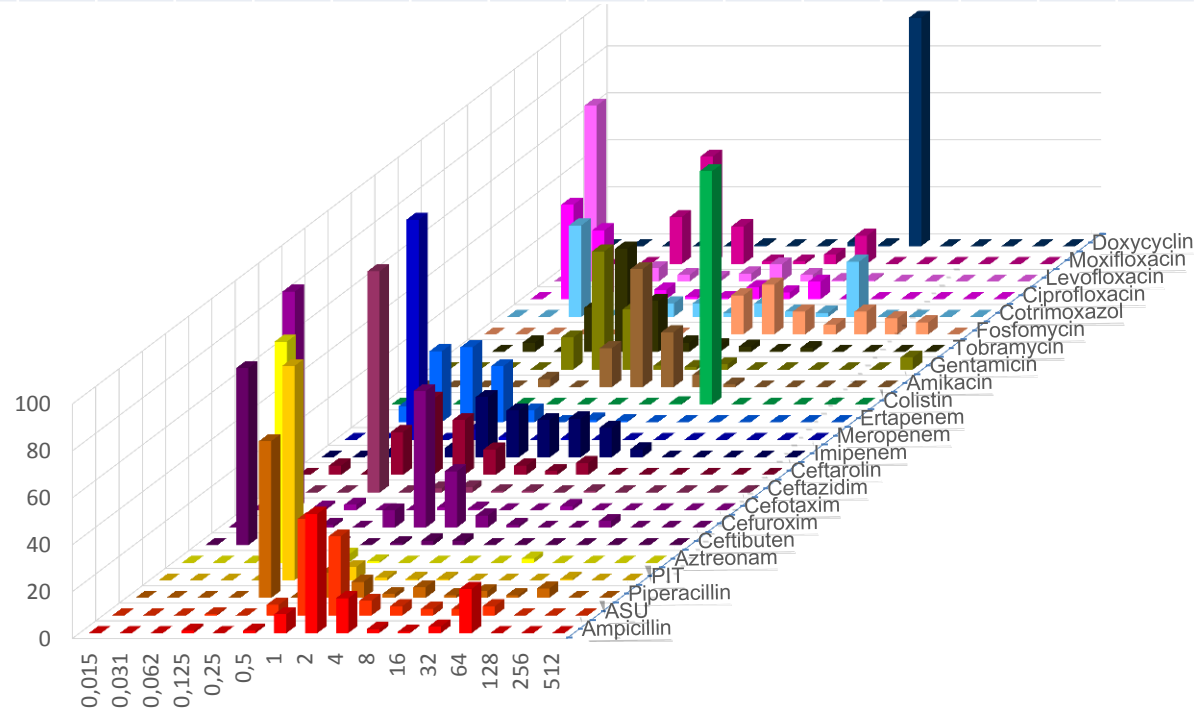
	AMP	ASU	PIP	PIT	AZT	CFB	CXM	CTX	CAZ	CTA	IMP	MER	ERT	COL	AMK	GEN	TOB	FOS	SXT	CIP	LEV	MOX	DOX
n	112	112	111	111	112	43	112	112	112	112	112	111	113	114	112	111	111	111	111	112	111	111	111
S	6	19	55	71	59	26	44	59	58	42	99	100	95	89	100	89	88	19	79	84	94	81	
I			3	5	4			2	4		1	0	3		0	0	1		0	1	3	5	
R	94	81	42	23	38	74	54	39	38	58	0	0	3	11	0	11	11	81	21	15	4	14	



# UKL Chirurgie 2015

## Proteus mirabilis

	AMP	ASU	PIP	PIT	AZT	CFB	CXM	CTX	CAZ	CTA	IMP	MER	ERT	COL	AMK	GEN	TOB	FOS	SXT	CIP	LEV	MOX	DOX
n	175	175	175	175	175	102	175	175	175	175	175	175	175	175	175	175	175	175	175	174	175	175	175
S	78	90	91	99	98	96	97	98	98	89	67	100	98	0	99	91	93	74	67	84	89	82	
I			1	0	0			1	1		29	0	0		1	1	3		6	1	7	1	
R	22	10	8	1	2	4	2	2	1	11	3	0	2	100	0	7	5	26	27	16	4	17	

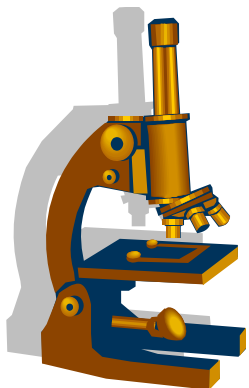
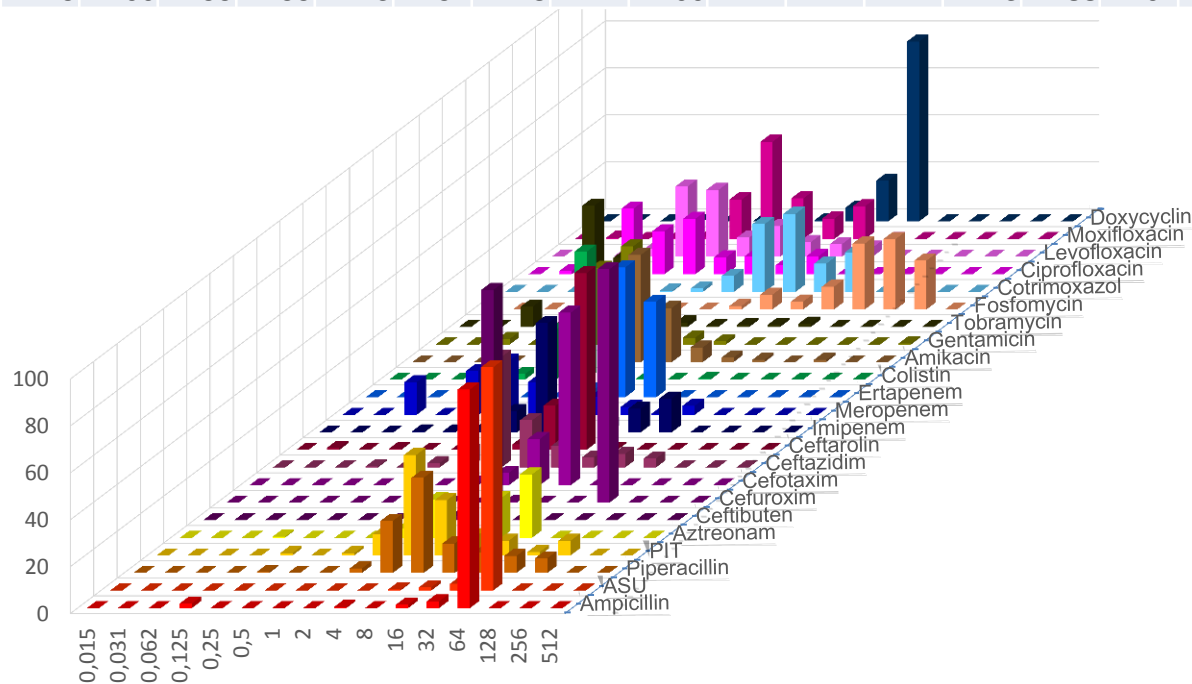


# UKL Chirurgie 2015

## Pseudomonas aeruginosa



	AMP	ASU	PIP	PIT	AZT	CFB	CXM	CTX	CAZ	CTA	IMP	MER	ERT	COL	AMK	GEN	TOB	FOS	SXT	CIP	LEV	MOX	DOX
n	207	208	207	208	207	112	208	208	208	207	208	208	206	207	208	208	207	207	208	208	208	208	208
S	2	0	65	77	0	0	0	0	10	3	58	85	0	99	96	94	96	12	9	74	72	19	
I			13	9	20			1	67		17	11	0		2	3	0		29	7	13	41	
R	98	100	22	14	79	100	99	99	23	97	25	4	100	1	2	2	3	88	62	19	15	40	

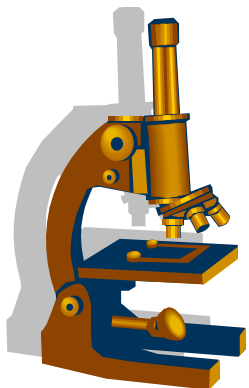
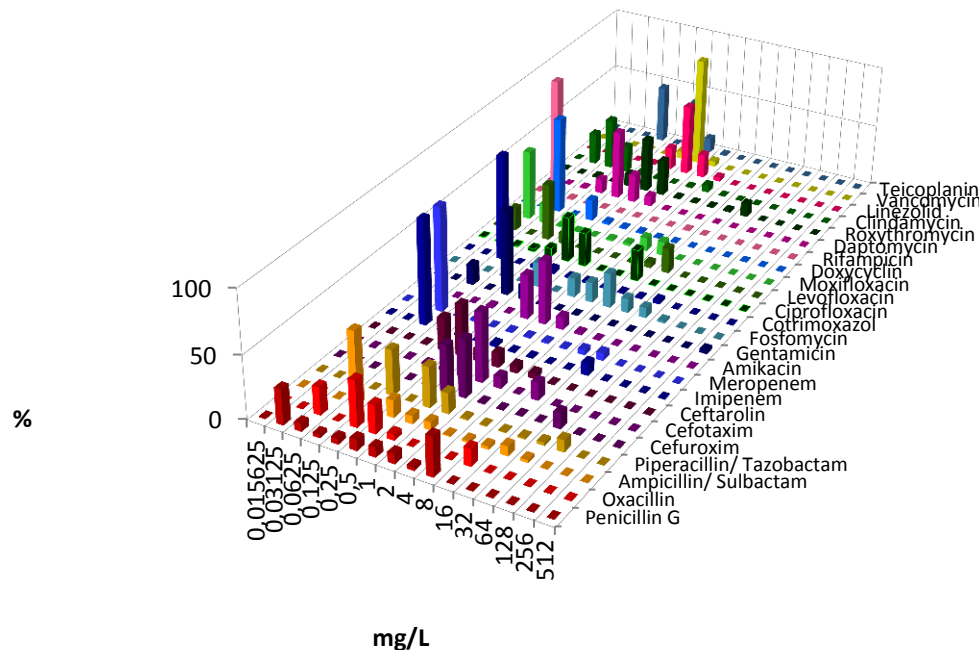


# UKL Chirurgie 2015

## Enterococcus faecalis



	ASU	PIT	IMP	SXT	CIP	LEV	DAP	LIN	VAN	TPL
n	380		382	379	381	380		382	382	382
S	99		99	0	55	58	?	100	99	100
I	0		1	84			?			
R	0		1	16	45	42	?	0	1	0





# UKL Chirurgie 2015

## Enterococcus faecium



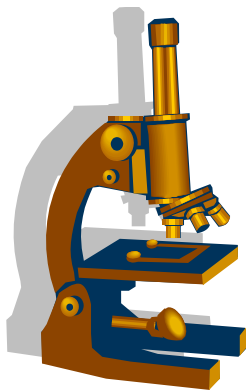
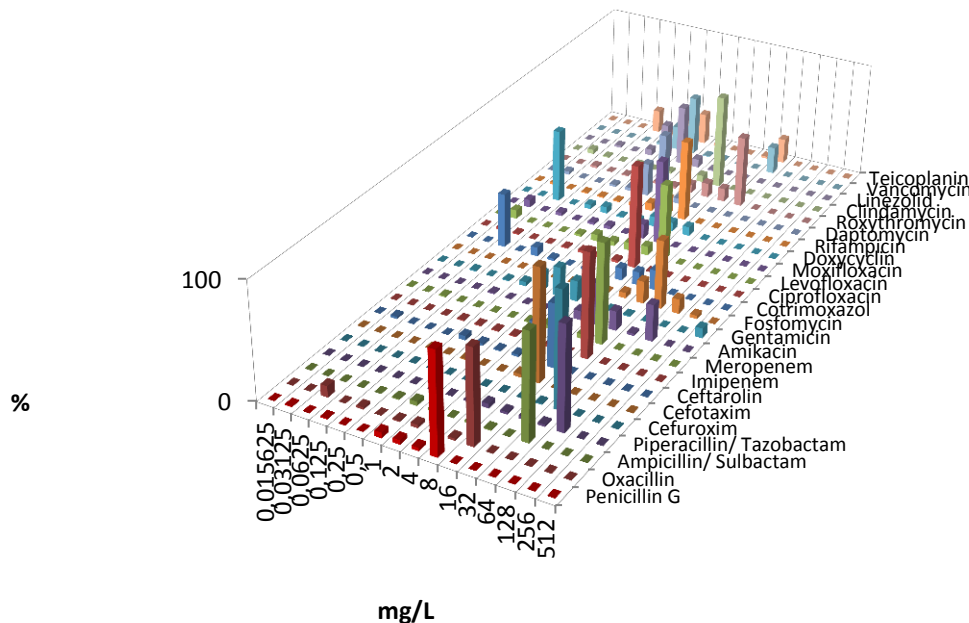
Universitätsklinikum  
Leipzig

Medizin ist unsere Berufung.



ZENTRUM FÜR  
INFEKTIONSMEZIZIN

	ASU	PIT	IMP	SXT	CIP	LEV	DAP	LIN	VANTPL	
n	104		108	104	101	104		109	110	110
S	7		7	0	11	26	?	100	76	76
I	2		3	57			?			
R	92		90	43	89	74	?	0	24	24



# UKL Chirurgie 2015

## Staphylococcus aureus



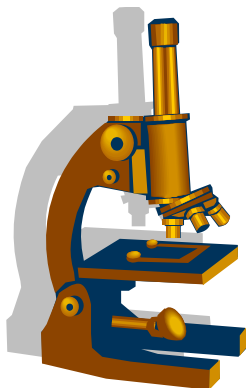
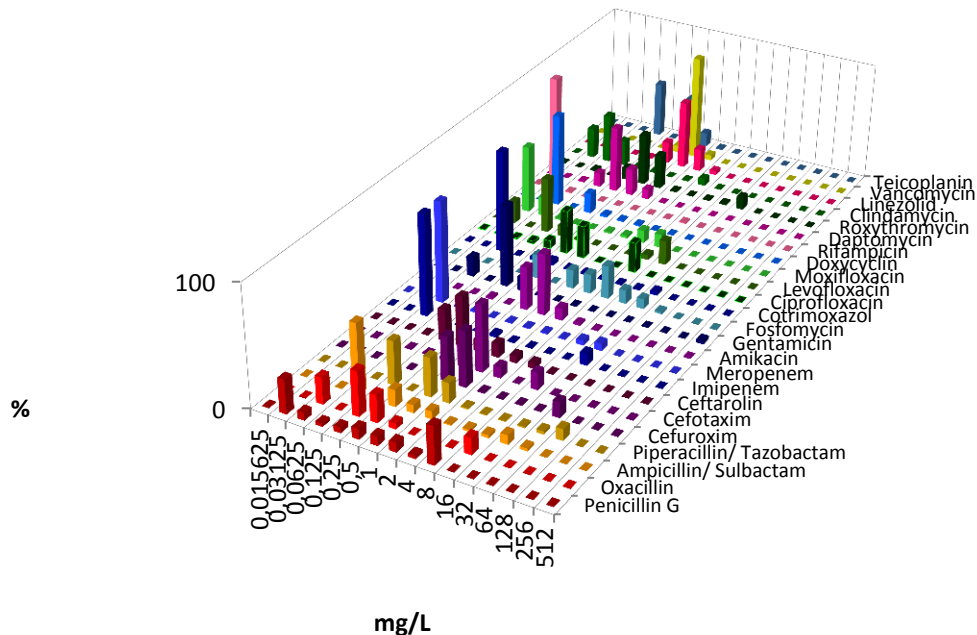
Universitätsklinikum  
Leipzig

Medizin ist unsere Berufung.



ZENTRUM FÜR  
INFEKTIONSMEZIN

	PEN	OXA	ASU	PIT	CXM	CTX	CTA	IMP	MER	AMK	GEN	FOS	SXT	CIP	LEV	MOX	DOX	RIF	DAP	ROX	CLI	LIN	VAN	TPL
n	355	354	354	354	355	355	355	354	353	354	355	354	354	354	355	355	354	354	354	355	355	355	355	355
S	37	86					89			100	97	98	95	75	75	74	99	99	100	85	91	100	100	100
I										0			1	0	1	1	1	0		1	1			
R	63	14					11			0	3	2	5	25	25	24	0	1	0	14	8	0	0	0



# UKL Chirurgie 2015

# Staphylococcus epidermidis



	PEN	OXA	ASU	PIT	CXM	CTX	CTA	IMP	MER	AMK	GEN	FOS	SXT	CIP	LEV	MOX	DOX	RIF	DAP	ROX	CLI	LIN	VAN	TPL	
n	235	237	235	237	237	237	238	237	235	235	238	236	235	237	237	235	235	236	236	238	238	237	238	237	
S	14	32					82			75	52	73	59	30	49	44	92	89	99	29	44	100	97	81	
I										0			11	1	14	20	2	0		0	3				
R	86	68					18			24	47	27	30	69	37	35	6	11	1	70	52	0	3	19	

