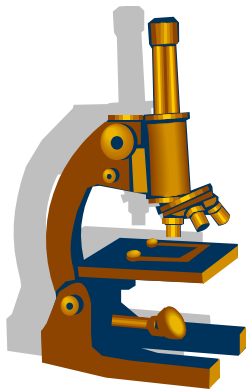




Resistenzepidemiologie 2015

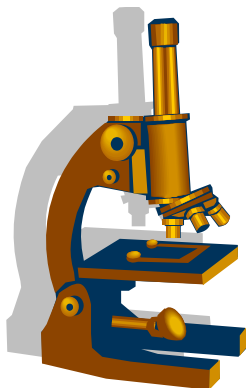
Arne C. Rodloff



Erreger Hämatologie



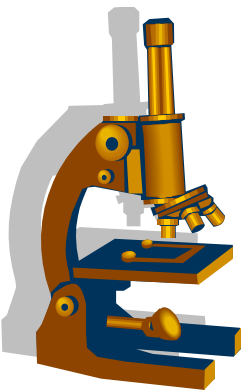
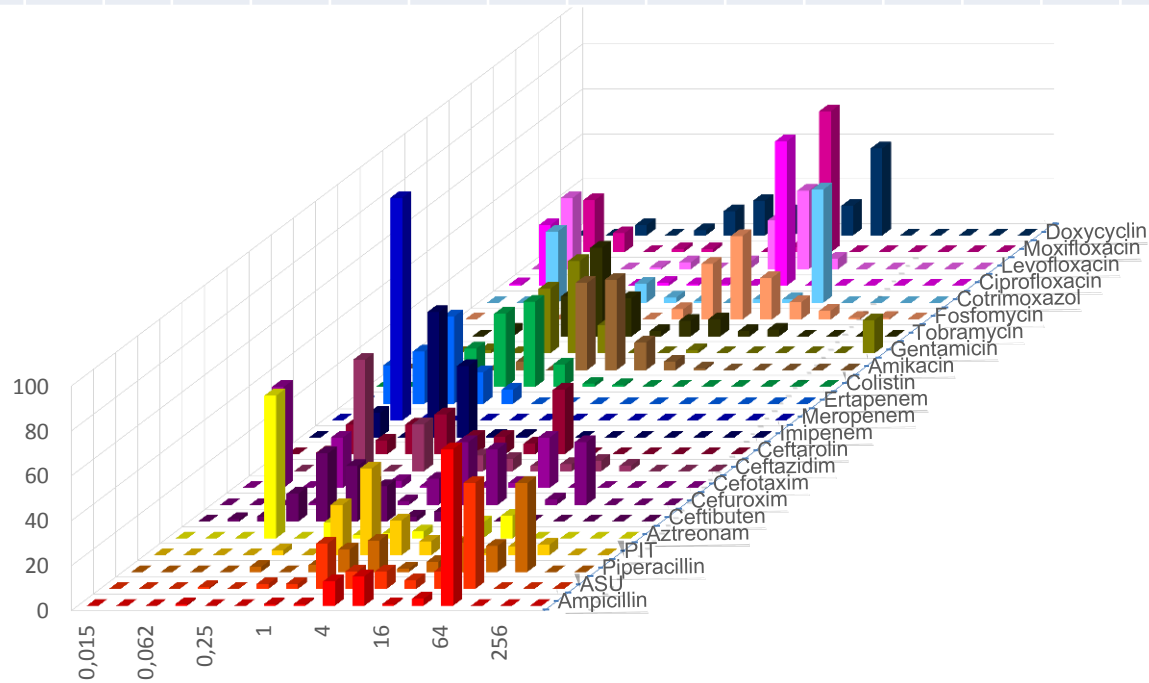
Escherichia coli	152	Klebsiella oxytoca	7
Staphylococcus epidermidis	148	Citrobacter freundii	6
Enterococcus faecium (Van A)	95	Serratia marcescens	6
Enterococcus faecalis	74	Staphylococcus capitis	5
Staphylococcus aureus	47	Haemophilus influenzae	4
Enterococcus faecium	43	Raoultella ornithinolytica	4
Escherichia coli (ESBL)	41	Staphylococcus hominis ssp. hominis	4
Klebsiella pneumoniae	39	Aspergillus fumigatus	3
Clostridium difficile	32	Citrobacter koseri	3
Proteus mirabilis	28	Enterobacter aerogenes	3
Staphylococcus hominis	24	Haemophilus parahaemolyticus	3
Candida albicans	20	Propionibacterium acnes	3
Streptococcus agalactiae	19	Proteus vulgaris	3
Pseudomonas aeruginosa	18	Rothia mucilaginosa	3
Staphylococcus haemolyticus	18	Staphylococcus warneri	3
Enterobacter cloacae	17	Streptococcus pneumoniae	3
Haemophilus parainfluenzae	17	Aspergillus flavus	2
Streptococcus mitis-Gruppe	16	Bacteroides fragilis	2
Candida sp.	15	Brucella melitensis	2
Stenotrophomonas maltophilia	15	Burkholderia cepacia (Komplex)	2
Klebsiella pneumoniae (ESBL)	12	Candida krusei	2
Candida glabrata	9	Candida tropicalis	2
Staphylococcus aureus ***MRSA***	9	Corynebacterium amycolatum	2
Acinetobacter baumannii	8	Corynebacterium striatum	2
Enterococcus faecium (Van B)	8	Hafnia alvei	2
Pseudomonas aeruginosa (MBL)	8		



UKL Häma 2015

Escherichia coli

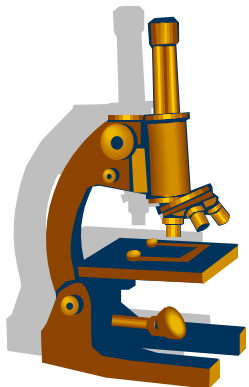
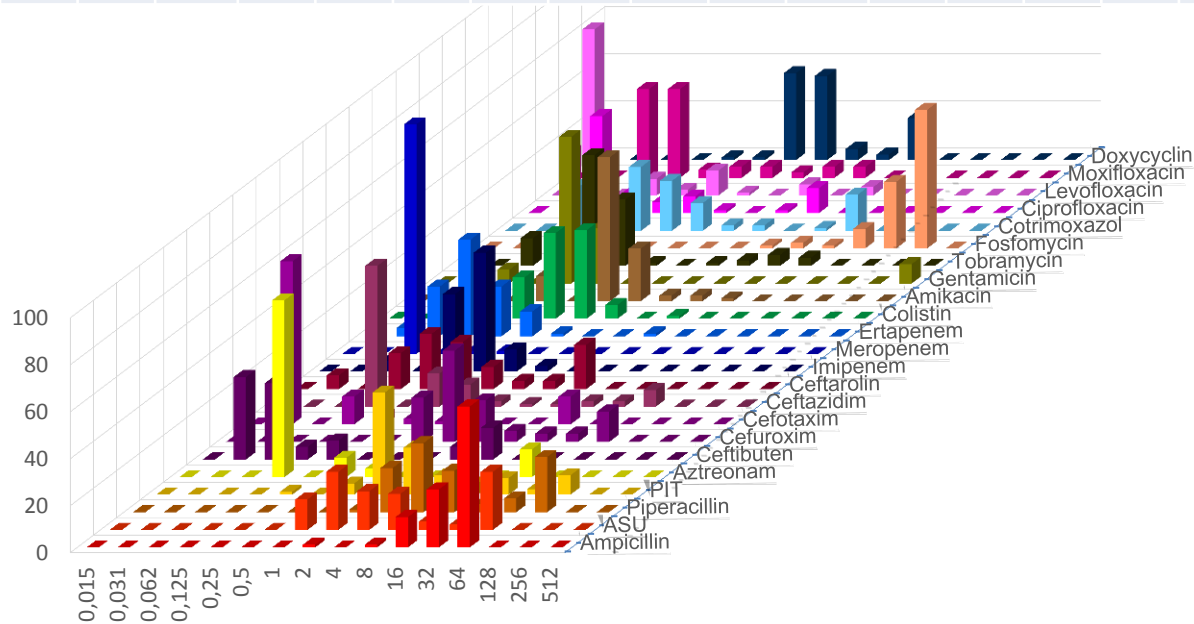
	AMP	ASU	PIP	PIT	AZT	CFB	CXM	CTX	CAZ	CTA	IMP	MER	ERT	COL	AMK	GEN	TOB	FOS	SXT	CIP	LEV	MOX	DOX
n	129	129	129	129	129	89	129	129	129	129	129	129	129	129	129	129	129	129	129	129	129	129	129
S	26	41	31	85	72	87	67	74	75	59	100	100	100	99	99	84	80	87	47	34	36	35	
I			5	5	5			1	12		0	0	0		1	0	7		0	1	3	0	
R	74	59	64	9	22	13	33	26	12	41	0	0	0	1	0	16	13	13	53	65	61	65	



UKL Häma 2015

Klebsiella pneumoniae

	AMP	ASU	PIP	PIT	AZT	CFB	CXM	CTX	CAZ	CTA	IMP	MER	ERT	COL	AMK	GEN	TOB	FOS	SXT	CIP	LEV	MOX	DOX
n	32	32	32	32	32	19	32	32	32	32	32	32	32	32	32	32	32	32	32	32	32	32	32
S	6	44	34	78	63	79	56	63	63	50	94	100	94	100	100	88	69	3	69	63	66	59	
I			13	9	0			0	6		6	0	0		0	0	9		6	3	3	3	
R	94	56	53	13	38	21	44	38	31	50	0	0	6	0	0	13	22	97	25	34	31	38	

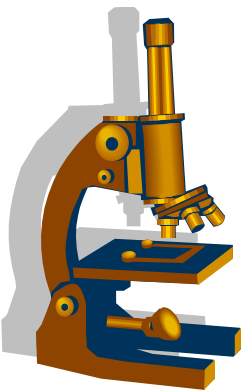
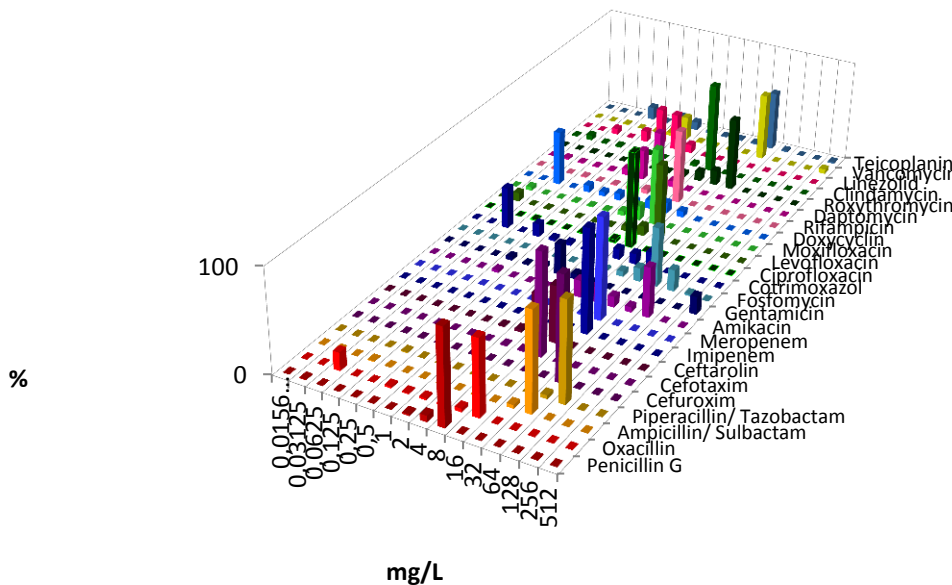


UKL Häma 2015

Enterococcus faecium



	ASU	PIT	IMP	SXT	CIP	LEV	DAP	LIN	VANTPL	
n	115		118	117	116	116		118	132	132
S	1		0	0	6	16	?	100	28	36
I	1		0	58			?			
R	98		100	42	94	84	?	0	72	64

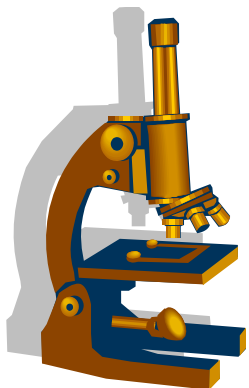
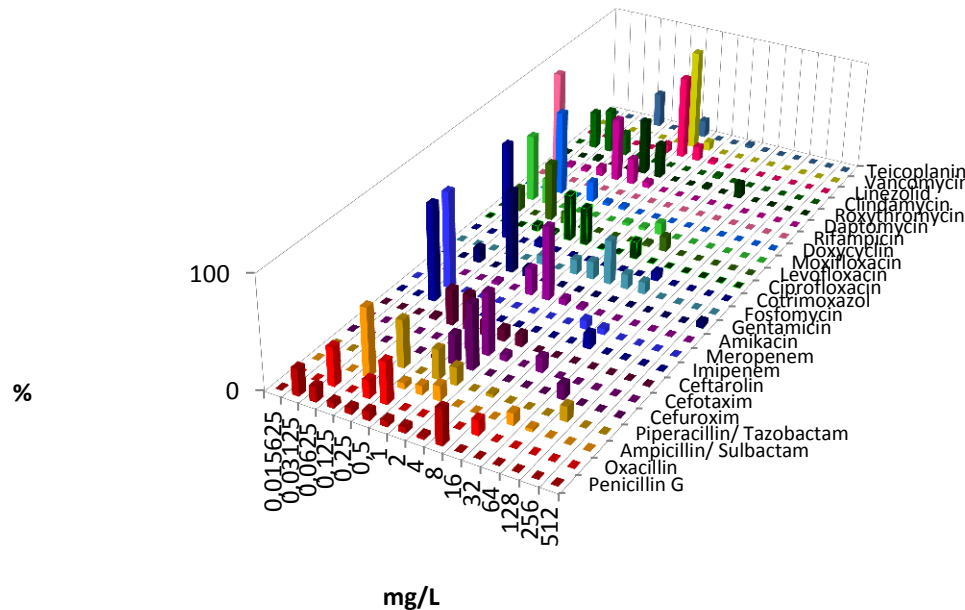


UKL Häma 2015

Staphylococcus aureus



	PEN	OXA	ASU	PIT	CXM	CTX	CTA	IMP	MER	AMK	GEN	FOS	SXT	CIP	LEV	MOX	DOX	RIF	DAP	ROX	CLI	LIN	VAN	TPL	
n	38	38	38	38	38	38	38	38	38	38	38	38	38	38	38	38	38	38	38	38	38	38	38	38	38
S	42	87					89			100	95	100	92	84	84	84	100	100	100	84	97	100	100	100	97
I										0			0	0	0	0	0	0			0	0			
R	58	13					11			0	5	0	8	16	16	16	0	0	0	16	3	0	0	0	3



UKL Häma 2015

Staphylococcus epidermidis



Universitätsklinikum
Leipzig

Medizin ist unsere Berufung.



ZENTRUM FÜR
INFEKTIONSMEZIN

	PEN	OXA	ASU	PIT	CXM	CTX	CTA	IMP	MER	AMK	GEN	FOS	SXT	CIP	LEV	MOX	DOX	RIF	DAP	ROX	CLI	LIN	VAN	TPL
n	131	130	130	131	131	131	130	130	130	130	131	131	130	131	131	131	131	131	131	131	131	131	130	130
S	11	26					82			76	36	73	33	15	34	33	84	97	100	32	40	100	100	100
I										2			15	2	16	19	2	2		0	2			
R	89	74					18			22	63	27	52	82	50	48	15	2	0	68	57	0	0	0

